

For Research Use Only

IL-1 Beta Monoclonal antibody, PBS Only (Detector)

Catalog Number: 66737-1-PBS

Featured Product



Basic Information

Catalog Number: 66737-1-PBS	GenBank Accession Number: BC008678	Purification Method: Protein A purification
Size: 100ug, Concentration: 1mg/ml by Nanodrop;	GeneID (NCBI): 3553	CloneNo.: 2A1B4
Source: Mouse	ENSEMBL Gene ID: ENSG00000125538	
Isotype: IgG1	UNIPROT ID: P01584	
Immunogen Catalog Number: AG26030	Full Name: interleukin 1, beta	
	Calculated MW: 269 aa, 31 kDa	
	Observed MW: 35 kDa	

Applications

Tested Applications:
WB, IHC, Sandwich ELISA, Indirect ELISA

Species Specificity:
human

Product Information

66737-1-PBS targets IL-1 Beta as part of a matched antibody pair:

MP80001-6: 82696-8-PBS capture and 66737-1-PBS detection (validated in Sandwich ELISA)

Unconjugated mouse monoclonal antibody pair in PBS only (BSA and azide free) storage buffer at a concentration of 1 mg/mL, ready for conjugation.

This conjugation ready format makes antibodies ideal for use in many applications including: ELISAs, multiplex assays requiring matched pairs, mass cytometry, and multiplex imaging applications. Antibody use should be optimized by the end user for each application and assay.

Background Information

Interleukin-1 is a pro-inflammatory cytokine with multiple biological effects. The IL-1 gene family encodes three proteins: IL-1 α , IL-1 β and their naturally occurring inhibitor IL-1RN. IL-1 Beta (IL-1 β), mainly produced by blood monocytes and tissue macrophages, has been implicated in mediating both acute and chronic inflammation. IL-1 β is known to be involved in a variety of cellular activities, including cell proliferation, differentiation and apoptosis. IL-1 β is emerging as a key mediator of carcinogenesis that characterizes host-environment interactions. Human IL-1 β is synthesized as a 31 kDa precursor. To gain activity, the precursor must be cleaved by caspase-1 between Asp116 and Ala117 to yield a 17 kDa mature form.

Storage

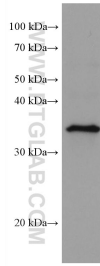
Storage:
Store at -80°C.

Storage Buffer:
PBS Only

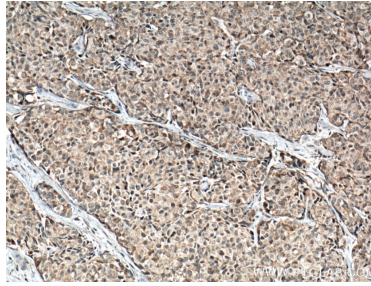
For technical support and original validation data for this product please contact:
T: 1 (888) 4PTGLAB (1-888-478-4522) (toll free in USA), or 1(312) 455-8498 (outside USA)
E: proteintech@ptglab.com
W: ptglab.com

This product is exclusively available under Proteintech Group brand and is not available to purchase from any other manufacturer.

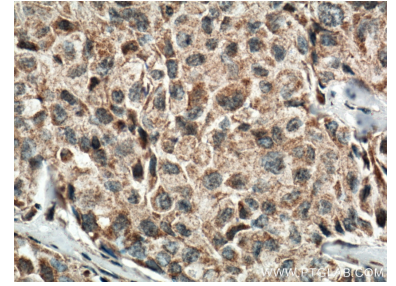
Selected Validation Data



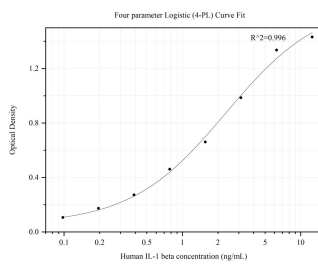
A431 cells were subjected to SDS PAGE followed by western blot with 66737-1-Ig (IL-1 Beta antibody) at dilution of 1:4000 incubated at room temperature for 1.5 hours. This data was developed using the same antibody clone with 66737-1-PBS in a different storage buffer formulation.



Immunohistochemical analysis of paraffin-embedded human lung cancer tissue slide using 66737-1-Ig (IL1 beta antibody) at dilution of 1:200 (under 10x lens. Heat mediated antigen retrieval with Tris-EDTA buffer (pH 9.0). This data was developed using the same antibody clone with 66737-1-PBS in a different storage buffer formulation.



Immunohistochemical analysis of paraffin-embedded human lung cancer tissue slide using 66737-1-Ig (IL1 beta antibody) at dilution of 1:200 (under 40x lens. Heat mediated antigen retrieval with Tris-EDTA buffer (pH 9.0). This data was developed using the same antibody clone with 66737-1-PBS in a different storage buffer formulation.



Sandwich ELISA standard curve of MP80001-6, IL-1 beta Hybrid Matched Antibody Pair, PBS Only. Capture antibody: 82696-8-RR. Detection antibody: HRP-conjugated 66737-1-PBS. Standard: HZ-1164. Range: 0.098-12.5 ng/mL.