

For Research Use Only

RBX1 Monoclonal antibody, PBS Only

Catalog Number: 66716-1-PBS



Basic Information

Catalog Number: 66716-1-PBS	GenBank Accession Number: BC001466	Purification Method: Protein G purification
Size: 100ug, Concentration: 1mg/ml by Nanodrop;	GeneID (NCBI): 9978	CloneNo.: 1F4D9
Source: Mouse	UNIPROT ID: P62877	
Isotype: IgG1	Full Name: ring-box 1	
Immunogen Catalog Number: AG7005	Calculated MW: 12 kDa	
	Observed MW: 12-15 kDa	

Applications

Tested Applications:
WB, IHC, IF/ICC, Indirect ELISA

Species Specificity:
human, mouse, rat

Background Information

RBX1(RING-box protein 1) is also named as RNF75, ROC1 and is a requisite component of the multi- subunit SCF family E3s36-40. It mediates the ubiquitination and subsequent proteasomal degradation of target proteins, including proteins involved in cell cycle progression, signal transduction, transcription and transcription-coupled nucleotide excision repair.

Storage

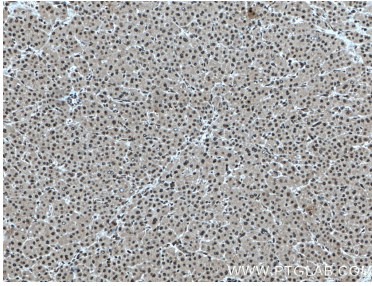
Storage:
Store at -80°C.

Storage Buffer:
PBS Only

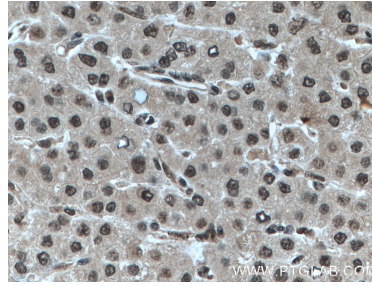
For technical support and original validation data for this product please contact:
T: 1 (888) 4PTGLAB (1-888-478-4522) (toll free in USA), or 1(312) 455-8498 (outside USA) E: proteintech@ptglab.com
W: ptglab.com

This product is exclusively available under Proteintech Group brand and is not available to purchase from any other manufacturer.

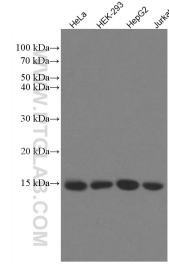
Selected Validation Data



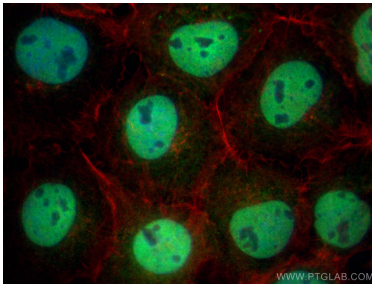
Immunohistochemical analysis of paraffin-embedded human liver cancer tissue slide using 66716-1-Ig (RBX1 antibody) at dilution of 1:5000 (under 10x lens) Heat mediated antigen retrieved with Sodium Citrate buffer (pH 6.0). This data was developed using the same antibody clone with 66716-1-PBS in a different storage buffer formulation.



Immunohistochemical analysis of paraffin-embedded human liver cancer tissue slide using 66716-1-Ig (RBX1 antibody) at dilution of 1:5000 (under 40x lens) Heat mediated antigen retrieved with Sodium Citrate buffer (pH 6.0). This data was developed using the same antibody clone with 66716-1-PBS in a different storage buffer formulation.



Various lysates were subjected to SDS PAGE followed by western blot with 66716-1-Ig (RBX1 antibody) at dilution of 1:50000 incubated at room temperature for 1.5 hours. This data was developed using the same antibody clone with 66716-1-PBS in a different storage buffer formulation.



Immunofluorescent analysis of (4% PFA) fixed A431 cells using RBX1 antibody (66716-1-Ig, Clone: 1F4D9) at dilution of 1:2000 and Multi-rAb Coralite © Plus 488-Goat Anti-Mouse Recombinant Secondary Antibody (H+L) (RGAM002), CL594-phalloidin (red). This data was developed using the same antibody clone with 66716-1-PBS in a different storage buffer formulation.