

For Research Use Only

GSTP1 Monoclonal antibody

Catalog Number: 66715-1-Ig

Featured Product

7 Publications



Basic Information

Catalog Number:

66715-1-Ig

GenBank Accession Number:

BC010915

Purification Method:

Protein A purification

Size:

150ul, Concentration: 1000 µg/ml by 2950

GeneID (NCBI):

2950

CloneNo.:

2D4A6

Nanodrop and 1000 µg/ml by Bradford method using BSA as the standard;

UNIPROT ID:

P09211

Recommended Dilutions:

WB 1:5000-1:50000

Source:

Mouse

Full Name:

glutathione S-transferase pi 1

IHC 1:500-1:2000

IF/ICC 1:400-1:1600

Isotype:

IgG1

Calculated MW:

210 aa, 23 kDa

Immunogen Catalog Number:

AG8880

Observed MW:

23 kDa

Applications

Tested Applications:

WB, IHC, IF/ICC, ELISA

Positive Controls:

WB : HuH-7 cells, HeLa cells, HEK-293 cells, HepG2 cells, Jurkat cells, HCT 116 cells, Caco-2 cells, SCaBER cells, MCF-10A cells

Cited Applications:

WB, IF, CoIP

IHC : human colon cancer tissue, human cervical cancer tissue, human kidney tissue, human ovary tumor tissue

Species Specificity:

human, rat

IF/ICC : HepG2 cells,

Cited Species:

human, mouse, rat

Note-IHC: suggested antigen retrieval with TE buffer pH 9.0; (*) Alternatively, antigen retrieval may be performed with citrate buffer pH 6.0

Notable Publications

| Author | Pubmed ID | Journal | Application |
|-------------|-----------|-------------------|-------------|
| Qiu-Lin Yan | 36209565 | Bioorg Chem | WB |
| Qi Feng | 32535103 | Biochem Pharmacol | WB |
| Wan-Li Duan | 38574838 | Eur J Pharmacol | CoIP |

Storage

Storage:

Store at -20°C. Stable for one year after shipment.

Storage Buffer:

PBS with 0.02% sodium azide and 50% glycerol pH 7.3.

Aliquoting is unnecessary for -20°C storage

*** 20ul sizes contain 0.1% BSA

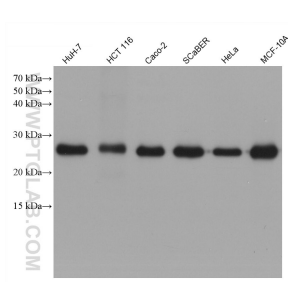
For technical support and original validation data for this product please contact:

T: 1 (888) 4PTGLAB (1-888-478-4522) (toll free in USA), or 1(312) 455-8498 (outside USA)

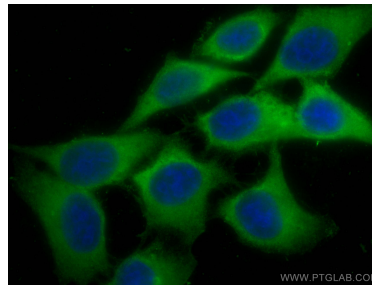
E: proteintech@ptglab.com
W: ptglab.com

This product is exclusively available under Proteintech Group brand and is not available to purchase from any other manufacturer.

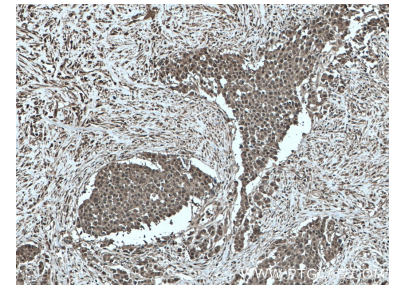
Selected Validation Data



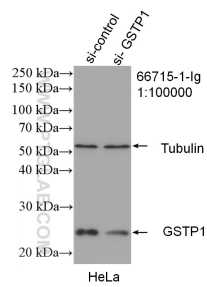
Various lysates were subjected to SDS PAGE followed by western blot with 66715-1-Ig (GSTP1 antibody) at dilution of 1:10000 incubated at room temperature for 1.5 hours.



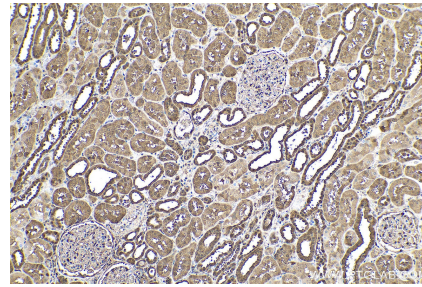
Immunofluorescent analysis of (-20°C Methanol) fixed HepG2 cells using GSTP1 antibody (66715-1-Ig, Clone: 2D4A6) at dilution of 1:800 and CoraLite®488-Conjugated AffiniPure Goat Anti-Mouse IgG(H+L).



Immunohistochemical analysis of paraffin-embedded human colon cancer tissue slide using 66715-1-Ig (GSTP1 antibody) at dilution of 1:1000 (under 10x lens). Heat mediated antigen retrieval with Tris-EDTA buffer (pH 9.0).



WB result of GSTP1 antibody (66715-1-Ig; 1:100000; incubated at room temperature for 1.5 hours) with sh-Control and sh-GSTP1 transfected HeLa cells.



Immunohistochemical analysis of paraffin-embedded human kidney tissue slide using 66715-1-Ig (GSTP1 antibody) at dilution of 1:4000 (under 10x lens). Heat mediated antigen retrieval with Tris-EDTA buffer (pH 9.0).