

For Research Use Only

TPT1 Monoclonal antibody, PBS Only

Catalog Number: 66713-1-PBS

Featured Product



Basic Information

Catalog Number: 66713-1-PBS	GenBank Accession Number: BC003352	Purification Method: Protein G purification
Size: 100ug , Concentration: 1mg/ml by Nanodrop;	GeneID (NCBI): 7178	CloneNo.: 1G6A10
Source: Mouse	UNIPROT ID: P13693	
Isotype: IgG1	Full Name: tumor protein, translationally-controlled 1	
Immunogen Catalog Number: AG27651	Calculated MW: 22 kDa	
	Observed MW: 22 kDa	

Applications

Tested Applications:
WB, IHC, IF/ICC, Indirect ELISA

Species Specificity:
human, mouse, rat

Background Information

The translationally controlled tumor protein (TPT1, also known as TCTP) is a highly conserved, abundantly expressed protein associated with cell growth and apoptosis regulation. It is overexpressed in most tumor cells and its down-regulation decreases the viability of those cells. This antibody detected 22 kDa TPT1 in lysates.

Storage

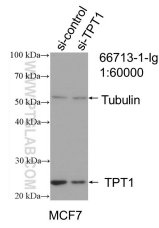
Storage:
Store at -80°C.

Storage Buffer:
PBS Only

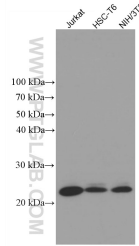
For technical support and original validation data for this product please contact:
T: 1 (888) 4PTGLAB (1-888-478-4522) (toll free in USA), or 1(312) 455-8498 (outside USA) E: proteintech@ptglab.com
W: ptglab.com

This product is exclusively available under Proteintech Group brand and is not available to purchase from any other manufacturer.

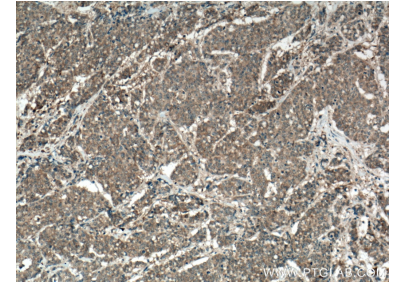
Selected Validation Data



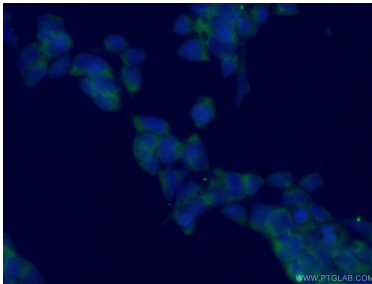
WB result of TPT1 antibody (66713-1-Ig: 1:60000; incubated at room temperature for 1.5 hours) with sh-Control and sh-TPT1 transfected MCF-7 cells. This data was developed using the same antibody clone with 66713-1-PBS in a different storage buffer formulation.



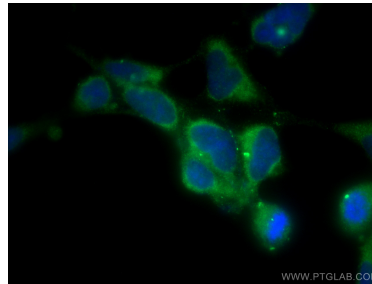
Various lysates were subjected to SDS PAGE followed by western blot with 66713-1-Ig (TPT1 antibody) at dilution of 1:10000 incubated at room temperature for 1.5 hours. This data was developed using the same antibody clone with 66713-1-PBS in a different storage buffer formulation.



Immunohistochemical analysis of paraffin-embedded human colon cancer tissue slide using 66713-1-Ig (TPT1 antibody) at dilution of 1:1000 (under 10x lens. Heat mediated antigen retrieval with Tris-EDTA buffer (pH 9.0). This data was developed using the same antibody clone with 66713-1-PBS in a different storage buffer formulation.



Immunofluorescent analysis of (-20°C Ethanol) fixed HEK-293 cells using 66713-1-Ig (TPT1 antibody) at dilution of 1:100 and Alexa Fluor 488-Conjugated AffiniPure Goat Anti-Mouse IgG(H+L). This data was developed using the same antibody clone with 66713-1-PBS in a different storage buffer formulation.



Immunofluorescent analysis of (-20°C Methanol) fixed HEK-293 cells using TPT1 antibody (66713-1-Ig, Clone: 1G6A10) at dilution of 1:400 and Coralite®488-Conjugated AffiniPure Goat Anti-Mouse IgG(H+L). This data was developed using the same antibody clone with 66713-1-PBS in a different storage buffer formulation.