

For Research Use Only

# CD21 Monoclonal antibody, PBS Only



Catalog Number: 66701-1-PBS

## Basic Information

<b>Catalog Number:</b> 66701-1-PBS	<b>GenBank Accession Number:</b> BC136394	<b>Purification Method:</b> Protein A purification
<b>Size:</b> 100ug, Concentration: 1 mg/ml by Nanodrop;	<b>GeneID (NCBI):</b> 1380	<b>CloneNo.:</b> 1D9A3
<b>Source:</b> Mouse	<b>ENSEMBL Gene ID:</b> ENSG00000117322	
<b>Isotype:</b> IgG2a	<b>UNIPROT ID:</b> P20023	
<b>Immunogen Catalog Number:</b> AG18058	<b>Full Name:</b> complement component (3d/Epstein Barr virus) receptor 2	
	<b>Calculated MW:</b> 1092 aa, 119 kDa	
	<b>Observed MW:</b> 150 kDa	

## Applications

**Tested Applications:**  
WB, Indirect ELISA

**Species Specificity:**  
Human

## Background Information

CD21, also known as complement receptor type 2 (CR2), complement C3d receptor, and Epstein-Barr virus receptor, is a transmembrane protein that contains a small cytoplasmic domain, a transmembrane region and an extracellular domain consisting of 15 tandem short consensus repeat sequences (PMID: 6230668; 2551147). It is expressed on B cells, follicular dendritic cells, thymocytes and a subset of peripheral T cells (PMID: 26119182). CD21 binds complement fragments C3d, C3dg and iC3b and acts as a receptor for the Epstein-Barr virus (PMID: 7753047). On B cells, together with CD19 and CD81, CD21 forms a complex that functions as a co-receptor to the BCR (PMID: 7542009). It is involved in B cells activation and functions.

## Storage

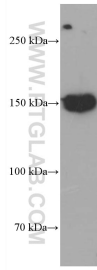
**Storage:**  
Store at -80°C.

**Storage Buffer:**  
PBS Only

For technical support and original validation data for this product please contact:  
T: 1 (888) 4PTGLAB (1-888-478-4522) (toll free in USA), or 1(312) 455-8498 (outside USA)      E: proteintech@ptglab.com  
W: ptglab.com

This product is exclusively available under Proteintech Group brand and is not available to purchase from any other manufacturer.

## Selected Validation Data



human spleen tissue were subjected to SDS PAGE followed by western blot with 66701-1-Ig (CD21 antibody) at dilution of 1:5000 incubated at room temperature for 1.5 hours. This data was developed using the same antibody clone with 66701-1-PBS in a different storage buffer formulation.