

For Research Use Only

# Cytokeratin 13 Monoclonal antibody, PBS Only (Capture)

Catalog Number: 66684-1-PBS

Featured Product



## Basic Information

**Catalog Number:**

66684-1-PBS

**Size:**

100ug, Concentration: 1 mg/ml by Nanodrop;

**Source:**

Mouse

**Isotype:**

IgG1

**Immunogen Catalog Number:**

AG0217

**GenBank Accession Number:**

BC002661

**GeneID (NCBI):**

3860

**UNIPROT ID:**

P13646

**Full Name:**

keratin 13

**Calculated MW:**

50 kDa

**Observed MW:**

50 kDa

**Purification Method:**

Protein A purification

**CloneNo.:**

1E10G2

## Applications

**Tested Applications:**

WB, IHC, IF-P, Cytometric bead array, Indirect ELISA

**Species Specificity:**

human, rat

## Product Information

66684-1-PBS targets Cytokeratin 13 as part of a matched antibody pair:

MP51141-1: 66684-1-PBS capture and 66684-2-PBS detection (validated in Cytometric bead array)

MP51141-3: 66684-1-PBS capture and 66684-4-PBS detection (validated in Cytometric bead array)

Unconjugated mouse monoclonal antibody pair in PBS only (BSA and azide free) storage buffer at a concentration of 1 mg/mL, ready for conjugation.

This conjugation ready format makes antibodies ideal for use in many applications including: ELISAs, multiplex assays requiring matched pairs, mass cytometry, and multiplex imaging applications. Antibody use should be optimized by the end user for each application and assay.

## Background Information

Keratins are a large family of proteins that form the intermediate filament cytoskeleton of epithelial cells, which are classified into two major sequence types. Type I keratins are a group of acidic intermediate filament proteins, including K9-K23, and the hair keratins Ha1-Ha8. Type II keratins are the basic or neutral counterparts to the acidic type I keratins, including K1-K8, and the hair keratins, Hb1-Hb6. This type I cytokeratin is paired with keratin 4 and expressed in the suprabasal layers of non-cornified stratified epithelia. The Keratin 13 (KRT13) gene encodes a type I acidic keratin which is expressed in the differentiated cells of non-cornified stratified squamous epithelia. This antibody can react with Cytokeratin 15.

## Storage

**Storage:**

Store at -80°C.

**Storage Buffer:**

PBS Only

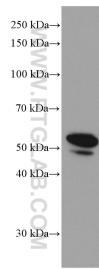
For technical support and original validation data for this product please contact:

T: 1 (888) 4PTGLAB (1-888-478-4522) (toll free in USA), or 1(312) 455-8498 (outside USA)

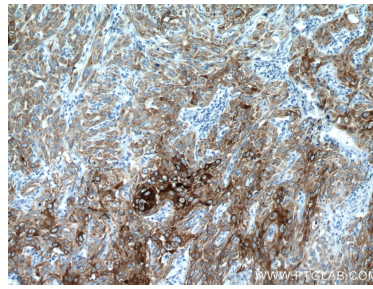
E: [proteintech@ptglab.com](mailto:proteintech@ptglab.com)  
W: [ptglab.com](http://ptglab.com)

**This product is exclusively available under Proteintech Group brand and is not available to purchase from any other manufacturer.**

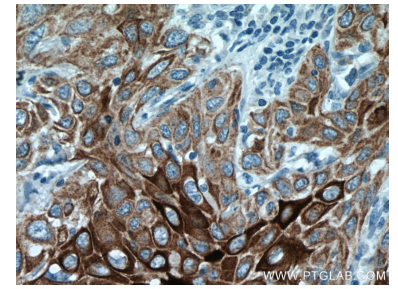
## Selected Validation Data



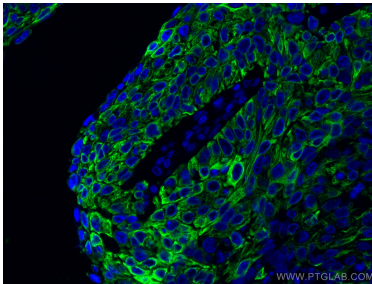
A431 cells were subjected to SDS PAGE followed by western blot with 66684-1-Ig (KRT13 antibody) at dilution of 1:10000 incubated at room temperature for 1.5 hours. This data was developed using the same antibody clone with 66684-1-PBS in a different storage buffer formulation.



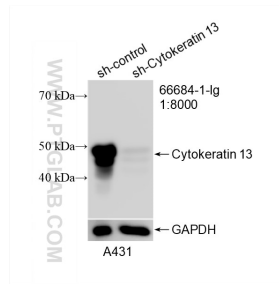
Immunohistochemical analysis of paraffin-embedded human cervical cancer tissue slide using 66684-1-Ig (KRT13 antibody) at dilution of 1:2000 (under 10x lens). Heat mediated antigen retrieval with Tris-EDTA buffer (pH 9.0). This data was developed using the same antibody clone with 66684-1-PBS in a different storage buffer formulation.



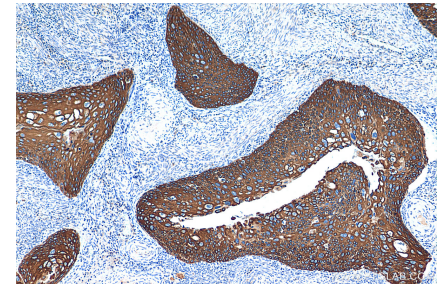
Immunohistochemical analysis of paraffin-embedded human cervical cancer tissue slide using 66684-1-Ig (KRT13 antibody) at dilution of 1:2000 (under 40x lens). Heat mediated antigen retrieval with Tris-EDTA buffer (pH 9.0). This data was developed using the same antibody clone with 66684-1-PBS in a different storage buffer formulation.



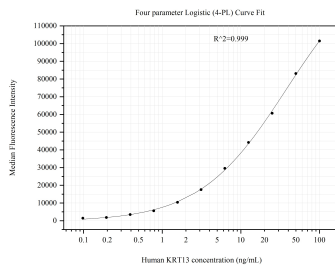
Immunofluorescent analysis of (4% PFA) fixed human cervical cancer tissue using Cytokeratin 13 antibody (66684-1-Ig, Clone: 1E10G2) at dilution of 1:400 and CoraLite@488-Conjugated AffiniPure Goat Anti-Mouse IgG(H+L). This data was developed using the same antibody clone with 66684-1-PBS in a different storage buffer formulation.



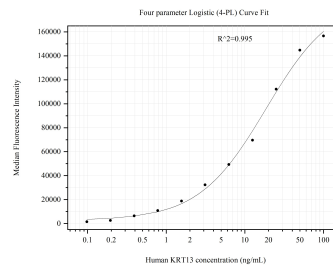
WB result of Cytokeratin 13 antibody (66684-1-Ig; 1:8000; incubated at room temperature for 1.5 hours) with sh-Control and sh-Cytokeratin 13 transfected A431 cells. This data was developed using the same antibody clone with 66684-1-PBS in a different storage buffer formulation.



Immunohistochemical analysis of paraffin-embedded human cervical cancer tissue slide using 66684-1-Ig (Cytokeratin 13 antibody) at dilution of 1:1000 (under 10x lens). Heat mediated antigen retrieval with Tris-EDTA buffer (pH 9.0). This data was developed using the same antibody clone with 66684-1-PBS in a different storage buffer formulation.



Cytometric bead array standard curve of MP51141-1, Cytokeratin 13 Monoclonal Matched Antibody Pair, PBS Only. Capture antibody: 66684-1-PBS. Detection antibody: 66684-2-PBS. Standard: Ag0217. Range: 0.098-100 ng/mL



Cytometric bead array standard curve of MP51141-3, Cytokeratin 13 Monoclonal Matched Antibody Pair, PBS Only. Capture antibody: 66684-1-PBS. Detection antibody: 66684-4-PBS. Standard: Ag0217. Range: 0.098-100 ng/mL