

For Research Use Only

Betacellulin Monoclonal antibody, PBS Only

Catalog Number: 66683-1-PBS



Basic Information

Catalog Number: 66683-1-PBS	GenBank Accession Number: BC011618	Purification Method: Protein G purification
Size: 100ug , Concentration: 1mg/ml by Nanodrop;	GeneID (NCBI): 685	CloneNo.: 2H5E8
Source: Mouse	UNIPROT ID: P35070	
Isotype: IgG1	Full Name: betacellulin	
Immunogen Catalog Number: AG26724	Calculated MW: 20 kDa	
	Observed MW: 20 kDa	

Applications

Tested Applications:
WB, Indirect ELISA

Species Specificity:
human

Background Information

Betacellulin (BTC), a member of the epidermal growth factor (EGF) family, binds and activates ErbB1 and ErbB4 homodimers. BTC is synthesized primarily as a transmembrane precursor, which is then processed to mature molecule by proteolytic events. This protein is a ligand for the EGF receptor. BTC was expressed in tumors and involved in tumor growth progression.

Storage

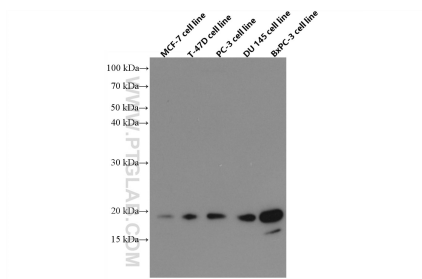
Storage:
Store at -80°C.

Storage Buffer:
PBS Only

For technical support and original validation data for this product please contact:
T: 1 (888) 4PTGLAB (1-888-478-4522) (toll free in USA), or 1(312) 455-8498 (outside USA)
E: proteintech@ptglab.com
W: ptglab.com

This product is exclusively available under Proteintech Group brand and is not available to purchase from any other manufacturer.

Selected Validation Data



Various lysates were subjected to SDS PAGE followed by western blot with 66683-1-Ig (BTC antibody) at dilution of 1:10000 incubated at room temperature for 1.5 hours. This data was developed using the same antibody clone with 66683-1-PBS in a different storage buffer formulation.