

For Research Use Only

PSMA/GCPII Monoclonal antibody, PBS Only (Detector)

Catalog Number:66678-1-PBS



Basic Information

Catalog Number: 66678-1-PBS	GenBank Accession Number: BC025672	Purification Method: Protein A purification
Size: 100ug , Concentration: 1mg/ml by Nanodrop;	GeneID (NCBI): 2346	CloneNo.: 3G4E12
Source: Mouse	UNIPROT ID: Q04609	
Isotype: IgG1	Full Name: folate hydrolase (prostate-specific membrane antigen) 1	
Immunogen Catalog Number: AG16594	Calculated MW: 719 aa, 81 kDa	
	Observed MW: 100-120 kDa	

Applications

Tested Applications:
WB, IHC, IF/ICC, IF-P, Cytometric bead array, Indirect ELISA

Species Specificity:
human, rat

Product Information

66678-1-PBS targets PSMA/GCPII as part of a matched antibody pair.

MP51112-1: 66678-2-PBS capture and 66678-1-PBS detection (validated in Cytometric bead array)

Unconjugated mouse monoclonal antibody pair in PBS only (BSA and azide free) storage buffer at a concentration of 1 mg/mL, ready for conjugation.

This conjugation ready format makes antibodies ideal for use in many applications including: ELISAs, multiplex assays requiring matched pairs, mass cytometry, and multiplex imaging applications. Antibody use should be optimized by the end user for each application and assay.

Background Information

PSMA(Prostate-specific membrane antigen) is also named as FOLH1, FOLH, NAALAD1, PSM and belongs to the peptidase M28 family. PSMA is a 100-120 kDa integral transmembrane glycoprotein, considered to be a highly specific marker of the prostate gland, and has successfully been used as a marker of circulating prostatic epithelial cells(PMID:10074909; 15680901). It is involved in conversion of the major neurotransmitter (NAA) to NAA and free glutamate. It has 8 isoforms produced by alternative splicing.

Storage

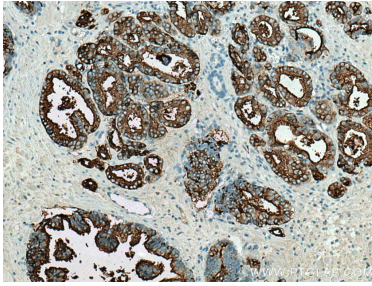
Storage:
Store at -80°C.

Storage Buffer:
PBS Only

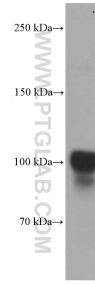
For technical support and original validation data for this product please contact:
T: 1 (888) 4PTGLAB (1-888-478-4522) (toll free in USA), or 1(312) 455-8498 (outside USA) E: proteintech@ptglab.com
W: ptglab.com

This product is exclusively available under Proteintech Group brand and is not available to purchase from any other manufacturer.

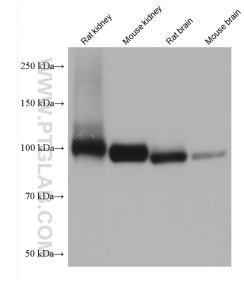
Selected Validation Data



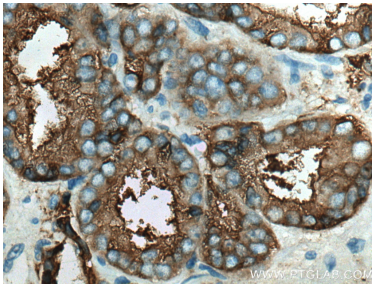
Immunohistochemical analysis of paraffin-embedded human prostate cancer tissue slide using 66678-1-Ig (PSMA/GCPII antibody) at dilution of 1:2000 (under 10x lens). Heat mediated antigen retrieval with Tris-EDTA buffer (pH 9.0). This data was developed using the same antibody clone with 66678-1-PBS in a different storage buffer formulation.



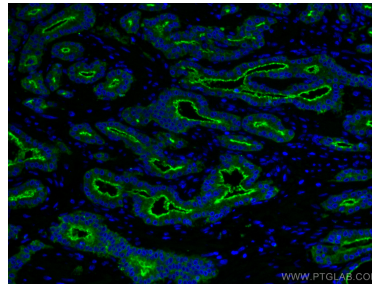
LNCaP cells were subjected to SDS PAGE followed by western blot with 66678-1-Ig (FOLH1 antibody) at dilution of 1:8000 incubated at room temperature for 1.5 hours. This data was developed using the same antibody clone with 66678-1-PBS in a different storage buffer formulation.



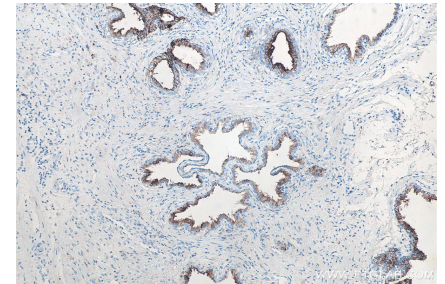
Various lysates were subjected to SDS PAGE followed by western blot with 66678-1-Ig (PSMA/GCPII antibody) at dilution of 1:20000 incubated at room temperature for 1.5 hours. This data was developed using the same antibody clone with 66678-1-PBS in a different storage buffer formulation.



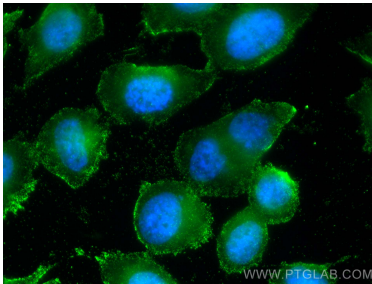
Immunohistochemical analysis of paraffin-embedded human prostate cancer tissue slide using 66678-1-Ig (PSMA/GCPII antibody) at dilution of 1:2000 (under 40x lens). Heat mediated antigen retrieval with Tris-EDTA buffer (pH 9.0). This data was developed using the same antibody clone with 66678-1-PBS in a different storage buffer formulation.



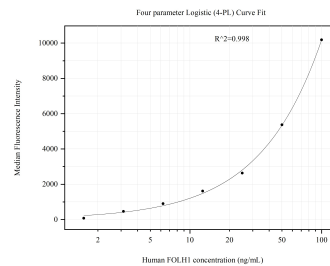
Immunofluorescent analysis of (4% PFA) fixed human prostate cancer tissue using PSMA/GCPII antibody (66678-1-Ig, Clone: 3G4E12) at dilution of 1:400 and CoraLite®488-Conjugated AffiniPure Goat Anti-Mouse IgG(H+L). This data was developed using the same antibody clone with 66678-1-PBS in a different storage buffer formulation.



Immunohistochemical analysis of paraffin-embedded human prostate cancer tissue slide using 66678-1-Ig (PSMA/GCPII antibody) at dilution of 1:4000 (under 10x lens). Heat mediated antigen retrieval with Tris-EDTA buffer (pH 9.0). This data was developed using the same antibody clone with 66678-1-PBS in a different storage buffer formulation.



Immunofluorescent analysis of (-20°C Methanol) fixed PC-3 cells using PSMA/GCPII antibody (66678-1-Ig, Clone: 3G4E12) at dilution of 1:400 and CoraLite®488-Conjugated AffiniPure Goat Anti-Mouse IgG(H+L). This data was developed using the same antibody clone with 66678-1-PBS in a different storage buffer formulation.



Cytometric bead array standard curve of MP5112-1, FOLH1 Monoclonal Matched Antibody Pair, PBS Only. Capture antibody: 66678-2-PBS. Detection antibody: 66678-1-PBS. Standard: Ag16594. Range: 1.563-100 ng/mL