

For Research Use Only

# ASF/SF2 Monoclonal antibody, PBS Only



Catalog Number: 66671-1-PBS

## Basic Information

<b>Catalog Number:</b> 66671-1-PBS	<b>GenBank Accession Number:</b> BC010264	<b>Purification Method:</b> Protein G purification
<b>Size:</b> 100ug , Concentration: 1 mg/ml by Nanodrop;	<b>GeneID (NCBI):</b> 6426	<b>CloneNo.:</b> 1A6C5
<b>Source:</b> Mouse	<b>UNIPROT ID:</b> Q07955	
<b>Isotype:</b> IgG1	<b>Full Name:</b> splicing factor, arginine/serine-rich 1	
<b>Immunogen Catalog Number:</b> AG3626	<b>Calculated MW:</b> 248 aa, 28 kDa	
	<b>Observed MW:</b> 32 kDa, 28 kDa, 22 kDa	

## Applications

**Tested Applications:**  
WB, IP, IF, IHC, Indirect ELISA

**Species Specificity:**  
Human, mouse, rat

## Background Information

SFRS1, also named as ASF, SF2, SF2P33, SFRS1 and ASF-1, belongs to the splicing factor SR family. It plays a role in preventing exon skipping, ensuring the accuracy of splicing and regulating alternative splicing. SFRS1 interacts with other spliceosomal components, via the RS domains, to form a bridge between the 5'- and 3'-splice site binding components, U1 snRNP and U2AF. Isoform ASF-2 and isoform ASF-3 act as splicing repressors. This antibody can recognize all the 3 isoforms(28kd,33kd and 22kd) of SFRS1.

## Storage

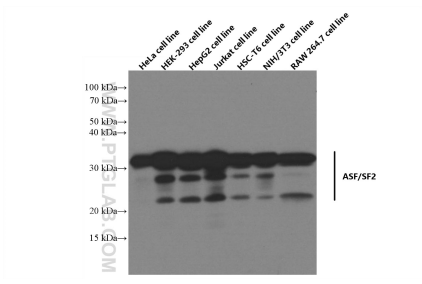
**Storage:**  
Store at -80°C.

**Storage Buffer:**  
PBS Only

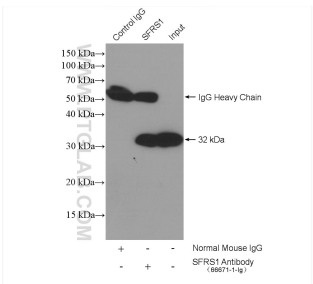
For technical support and original validation data for this product please contact:  
T: 1 (888) 4PTGLAB (1-888-478-4522) (toll free in USA), or 1(312) 455-8498 (outside USA)  
E: [proteintech@ptglab.com](mailto:proteintech@ptglab.com)  
W: [ptglab.com](http://ptglab.com)

This product is exclusively available under Proteintech Group brand and is not available to purchase from any other manufacturer.

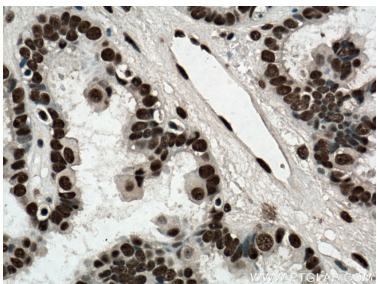
## Selected Validation Data



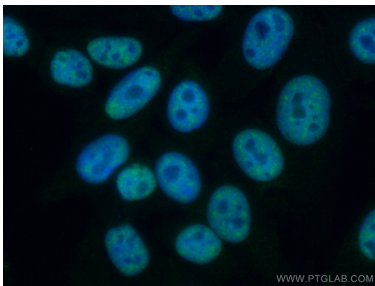
Various lysates were subjected to SDS PAGE followed by western blot with 66671-1-Ig (ASF/SF2 antibody) at dilution of 1:20000 incubated at room temperature for 1.5 hours. This data was developed using the same antibody clone with 66671-1-PBS in a different storage buffer formulation.



IP result of anti-ASF/SF2 (IP:66671-1-Ig, 5ug; Detection:66671-1-Ig 1:5000) with HeLa cells lysate 2200 ug. This data was developed using the same antibody clone with 66671-1-PBS in a different storage buffer formulation.



Immunohistochemical analysis of paraffin-embedded human ovary tumor tissue slide using 66671-1-Ig (ASF/SF2 antibody) at dilution of 1:400 (under 40x lens. Heat mediated antigen retrieval with Tris-EDTA buffer (pH 9.0). This data was developed using the same antibody clone with 66671-1-PBS in a different storage buffer formulation.



Immunofluorescent analysis of (4% PFA) fixed HepG2 cells using ASF/SF2 antibody (66671-1-Ig, Clone: 1A6C5) at dilution of 1:400 and CoraLite®488-Conjugated AffiniPure Goat Anti-Mouse IgG(H+L). This data was developed using the same antibody clone with 66671-1-PBS in a different storage buffer formulation.