

For Research Use Only

# GOLGA2/GM130 Monoclonal antibody, PBS Only



Catalog Number: 66662-1-PBS

Featured Product

## Basic Information

Catalog Number:

66662-1-PBS

Size:

100ug, Concentration: 1 mg/ml by Nanodrop;

Source:

Mouse

Isotype:

IgG1

Immunogen Catalog Number:

AG1848

GenBank Accession Number:

BC014188

GeneID (NCBI):

2801

UNIPROT ID:

Q08379

Full Name:

golgi autoantigen, golgin subfamily a, 2

Calculated MW:

111 kDa

Observed MW:

130 kDa

Purification Method:

Protein G purification

CloneNo.:

2A4F11

## Applications

Tested Applications:

WB, IF, Indirect ELISA

Species Specificity:

Human, Rat

## Background Information

GOLGA2, also known as GM130, is a 130 kDa cis-Golgi matrix protein which is one component of the detergent and salt resistant Golgi matrix. It is a peripheral membrane protein highly bound to Golgi membrane and localized mainly at the cytoplasmic face of cis-Golgi membrane. Together with its interacting partner proteins, including p115, giantin, GRASP65, and Rab GTPase, GOLGA2/GM130 is involved in the regulation of ER-to-Golgi transport and also in the maintenance of the Golgi structure. Emerging evidence suggest that the GOLGA2/GM130 has potential roles in the control of glycosylation, cell cycle progression, and higher order cell functions such as cell polarization and directed cell migration. (PMID: 20197635)

## Storage

Storage:

Store at -80°C.

Storage Buffer:

PBS Only

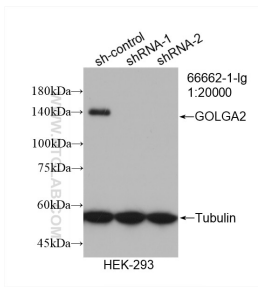
For technical support and original validation data for this product please contact:

T: 1 (888) 4PTGLAB (1-888-478-4522) (toll free in USA), or 1(312) 455-8498 (outside USA)

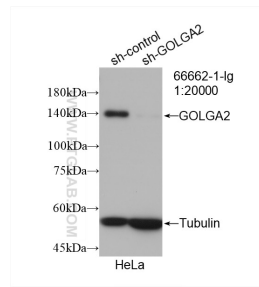
E: [proteintech@ptglab.com](mailto:proteintech@ptglab.com)  
W: [ptglab.com](http://ptglab.com)

This product is exclusively available under Proteintech Group brand and is not available to purchase from any other manufacturer.

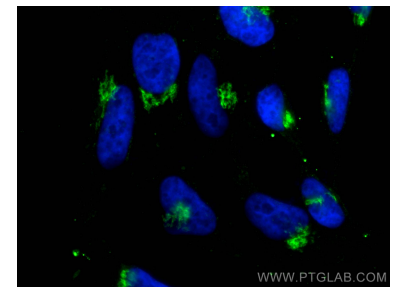
## Selected Validation Data



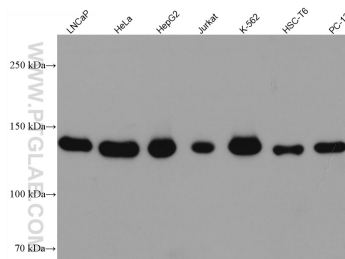
WB result of GOLGA2/GM130 antibody (66662-1-Ig; 1:20000; incubated at room temperature for 1.5 hours) with sh-Control and sh-GOLGA2/GM130 transfected HEK-293 cells. This data was developed using the same antibody clone with 66662-1-PBS in a different storage buffer formulation.



WB result of GOLGA2/GM130 antibody (66662-1-Ig; 1:20000; incubated at room temperature for 1.5 hours) with sh-Control and sh-GOLGA2/GM130 transfected HeLa cells. This data was developed using the same antibody clone with 66662-1-PBS in a different storage buffer formulation.



Immunofluorescent analysis of (4% PFA) fixed HeLa cells using GOLGA2/GM130 antibody (66662-1-Ig, Clone: 2A4F11 ) at dilution of 1:1000 and CoraLite@488-Conjugated AffiniPure Goat Anti-Mouse IgG(H+L). This data was developed using the same antibody clone with 66662-1-PBS in a different storage buffer formulation.



Various lysates were subjected to SDS PAGE followed by western blot with 66662-1-Ig (GOLGA2/GM130 antibody) at dilution of 1:10000 incubated at room temperature for 1.5 hours. This data was developed using the same antibody clone with 66662-1-PBS in a different storage buffer formulation.