

For Research Use Only

GOLGA2/GM130 Monoclonal antibody

Catalog Number: 66662-1-Ig

Featured Product

16 Publications



Basic Information

Catalog Number: 66662-1-Ig	GenBank Accession Number: BC014188	Purification Method: Protein A purification
Size: 150ul , Concentration: 1000 ug/ml by Nanodrop;	GeneID (NCBI): 2801	CloneNo.: 2A4F11
Source: Mouse	UNIPROT ID: Q08379	Recommended Dilutions: WB 1:5000-1:50000 IF/ICC 1:500-1:2000
Isotype: IgG1	Full Name: golgi autoantigen, golgin subfamily a, 2	
Immunogen Catalog Number: AG1848	Calculated MW: 111 kDa	
	Observed MW: 130 kDa	

Applications

Tested Applications: WB, IF/ICC, ELISA	Positive Controls: WB : LNCaP cells, HEK-293 cells, HeLa cells, HepG2 cells, Jurkat cells, HSC-T6 cells, K-562 cells, PC-12 cells
Cited Applications: WB, IF	IF/ICC : HeLa cells,
Species Specificity: human, rat	
Cited Species: human, mouse, rat	

Background Information

GOLGA2, also known as GM130, is a 130 kDa cis-Golgi matrix protein which is one component of the detergent and salt resistant Golgi matrix. It is a peripheral membrane protein highly bound to Golgi membrane and localized mainly at the cytoplasmic face of cis-Golgi membrane. Together with its interacting partner proteins, including p115, giantin, GRASP65, and Rab GTPase, GOLGA2/GM130 is involved in the regulation of ER-to-Golgi transport and also in the maintenance of the Golgi structure. Emerging evidence suggest that the GOLGA2/GM130 has potential roles in the control of glycosylation, cell cycle progression, and higher order cell functions such as cell polarization and directed cell migration. (PMID: 20197635)

Notable Publications

Author	Pubmed ID	Journal	Application
Xiaoliang Tan	36136987	Anticancer Drugs	WB
Nan Zhou	35174212	Front Mol Biosci	WB
Han Zeng	34974159	Mol Metab	WB

Storage

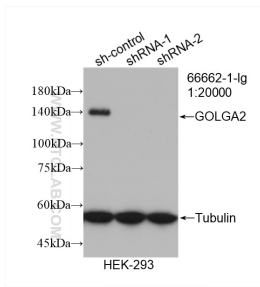
Storage:
Store at -20°C. Stable for one year after shipment.
Storage Buffer:
PBS with 0.02% sodium azide and 50% glycerol, pH7.3
Aliquoting is unnecessary for -20°C storage

*** 20ul sizes contain 0.1% BSA

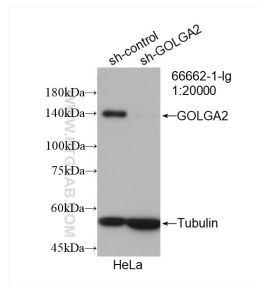
For technical support and original validation data for this product please contact:
T: 1 (888) 4PTGLAB (1-888-478-4522) (toll free in USA), or 1(312) 455-8498 (outside USA)
E: proteintech@ptglab.com
W: ptglab.com

This product is exclusively available under Proteintech Group brand and is not available to purchase from any other manufacturer.

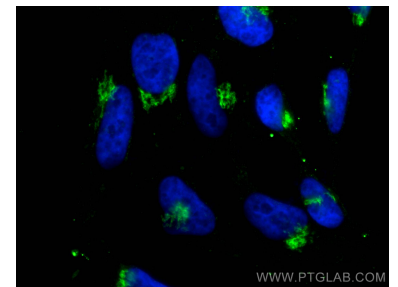
Selected Validation Data



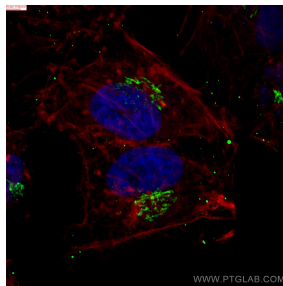
WB result of GOLGA2/GM130 antibody (66662-1-Ig; 1:20000; incubated at room temperature for 1.5 hours) with sh-Control and sh-GOLGA2/GM130 transfected HEK-293 cells.



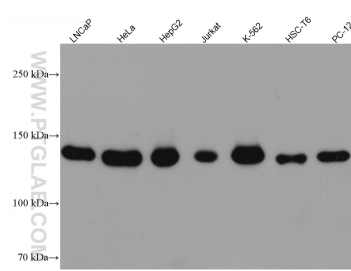
WB result of GOLGA2/GM130 antibody (66662-1-Ig; 1:20000; incubated at room temperature for 1.5 hours) with sh-Control and sh-GOLGA2/GM130 transfected HeLa cells.



Immunofluorescent analysis of (4% PFA) fixed HeLa cells using GOLGA2/GM130 antibody (66662-1-Ig, Clone: 2A4F11) at dilution of 1:1000 and CoraLite@488-Conjugated AffiniPure Goat Anti-Mouse IgG(H+L).



Immunofluorescent analysis of (4% PFA) fixed HeLa cells using GOLGA2/GM130 antibody (66662-1-Ig, Clone: 2A4F11) at dilution of 1:800 and CoraLite@488-Conjugated Goat Anti-Mouse IgG(H+L) (SA00013-1), CL594-Phalloidin (red).



Various lysates were subjected to SDS PAGE followed by western blot with 66662-1-Ig (GOLGA2/GM130 antibody) at dilution of 1:10000 incubated at room temperature for 1.5 hours.