

For Research Use Only

MYD88 Monoclonal antibody

Catalog Number: 66660-1-Ig **10 Publications**



Basic Information

Catalog Number: 66660-1-Ig	GenBank Accession Number: BC013589	Purification Method: Protein A purification
Size: 150ul , Concentration: 1000 µg/ml by Bradford method using BSA as the standard;	GeneID (NCBI): 4615	CloneNo.: 1B10E12
Source: Mouse	UNIPROT ID: Q99836	Recommended Dilutions: WB 1:2000-1:10000
Isotype: IgG1	Full Name: myeloid differentiation primary response gene (88)	
Immunogen Catalog Number: AG19770	Calculated MW: 33 kDa	
	Observed MW: 33-36 kDa	

Applications

Tested Applications: WB, ELISA	Positive Controls: WB : HSC-T6 cells, HepG2 cells, PC-12 cells, NIH/3T3 cells, 4T1 cells, SP2/O cells
Cited Applications: WB, IHC	
Species Specificity: Human, rat, mouse	
Cited Species: human, mouse	

Background Information

MYD88 is a cytosolic adaptor protein that plays a central role in the innate and adaptive immune response. MYD88 is the key adaptor protein for the interleukin-1 receptor (IL-1R) and most Toll-like receptors (TLRs), which are essential for innate immunity and pathogen-associated molecular pattern recognition. Mutations in the MyD88 gene lead to the development of cancer in humans and mice suggesting that MyD88 also plays a cell autonomous role in tissue homeostasis.

Notable Publications

Author	Pubmed ID	Journal	Application
Pengwei Luan	32898527	Life Sci	WB
Huiqing Zhang	33860064	J Immunol Res	WB
Lixian Jiang	33606516	ACS Nano	WB

Storage

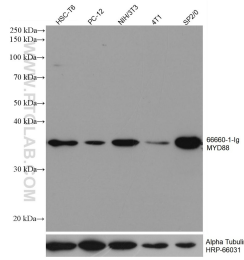
Storage:
Store at -20°C. Stable for one year after shipment.
Storage Buffer:
PBS with 0.02% sodium azide and 50% glycerol, pH7.3
Aliquoting is unnecessary for -20°C storage

*** 20ul sizes contain 0.1% BSA

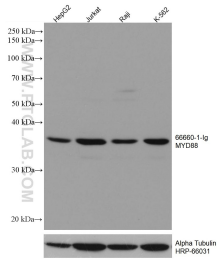
For technical support and original validation data for this product please contact:
T: 1 (888) 4PTGLAB (1-888-478-4522) (toll free in USA), or 1(312) 455-8498 (outside USA)
E: proteintech@ptglab.com
W: ptglab.com

This product is exclusively available under Proteintech Group brand and is not available to purchase from any other manufacturer.

Selected Validation Data



Various lysates were subjected to SDS PAGE followed by western blot with 66660-1-Ig (MYD88 antibody) at dilution of 1:5000 incubated at room temperature for 1.5 hours. The membrane was stripped and reblotted with HRP-conjugated Alpha Tubulin Monoclonal antibody (HRP-66031) as loading control.



Various lysates were subjected to SDS PAGE followed by western blot with 66660-1-Ig (MYD88 antibody) at dilution of 1:5000 incubated at room temperature for 1.5 hours. The membrane was stripped and reblotted with HRP-conjugated Alpha Tubulin Monoclonal antibody (HRP-66031) as loading control.