

For Research Use Only

# ETV5 Monoclonal antibody, PBS Only (Capture)

Catalog Number: 66657-1-PBS



## Basic Information

<b>Catalog Number:</b> 66657-1-PBS	<b>GenBank Accession Number:</b> BC007333	<b>Purification Method:</b> Protein A purification
<b>Size:</b> 100ug, Concentration: 1mg/ml by Nanodrop;	<b>GeneID (NCBI):</b> 2119	<b>CloneNo.:</b> 2A4A4
<b>Source:</b> Mouse	<b>UNIPROT ID:</b> P41161	
<b>Isotype:</b> IgG2a	<b>Full Name:</b> ets variant 5	
<b>Immunogen Catalog Number:</b> AG3708	<b>Calculated MW:</b> 510 aa, 58 kDa	
	<b>Observed MW:</b> 58-60 kDa	

## Applications

**Tested Applications:**  
WB, Sandwich ELISA, Indirect ELISA

**Species Specificity:**  
Human

## Product Information

66657-1-PBS targets ETV5 as part of a matched antibody pair.

MP50024-1: 66657-1-PBS capture and 66657-2-PBS detection (validated in Sandwich ELISA)

Unconjugated mouse monoclonal antibody pair in PBS only (BSA and azide free) storage buffer at a concentration of 1 mg/mL, ready for conjugation.

This conjugation ready format makes antibodies ideal for use in many applications including: ELISAs, multiplex assays requiring matched pairs, mass cytometry, and multiplex imaging applications. Antibody use should be optimized by the end user for each application and assay.

## Background Information

ETS variant gene 5(ETV5) belongs to the ETS oncogene family that shares a conserved peptide, ETS domain, which mediates sequence-specific DNA binding. ETV5 is a transcription factor and is required for spermatogonial stem cell self-renewal. ETV5 can be negatively regulated by COP1, a tumor suppressor. Also it has a role in branching morphogenesis in the developing kidney

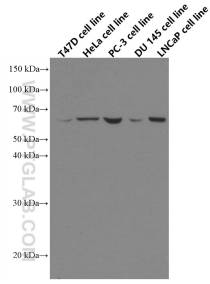
## Storage

**Storage:**  
Store at -80°C.  
**Storage Buffer:**  
100% PBS pH 7.3

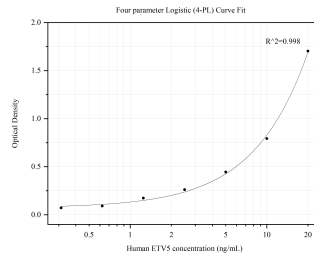
For technical support and original validation data for this product please contact:  
T: 1 (888) 4PTGLAB (1-888-478-4522) (toll free in USA), or 1(312) 455-8498 (outside USA)      E: proteintech@ptglab.com  
W: ptglab.com

**This product is exclusively available under Proteintech Group brand and is not available to purchase from any other manufacturer.**

## Selected Validation Data



Various lysates were subjected to SDS PAGE followed by western blot with 66657-1-Ig (ETV5 antibody) at dilution of 1:2000 incubated at room temperature for 1.5 hours. This data was developed using the same antibody clone with 66657-1-PBS in a different storage buffer formulation.



Sandwich ELISA standard curve of MP50024-1, ETV5 Monoclonal Matched Antibody Pair, PBS Only. Capture antibody: 66657-1-PBS. Detection antibody: HRP-conjugated 66657-2-PBS. Standard: Ag3708. Range: 0.313-20 ng/m.