

For Research Use Only

FANCL Monoclonal antibody, PBS Only



Catalog Number: 66639-1-PBS

Featured Product

Basic Information

Catalog Number:

66639-1-PBS

Size:

100ug, Concentration: 1 mg/ml by Nanodrop;

Source:

Mouse

Isotype:

IgG2a

Immunogen Catalog Number:

AG6192

GenBank Accession Number:

BC054517

GeneID (NCBI):

55120

UNIPROT ID:

Q9NW38

Full Name:

Fanconi anemia, complementation group L

Calculated MW:

43 kDa

Observed MW:

41-43 kDa

Purification Method:

Protein A purification

CloneNo.:

6E2B6

Applications

Tested Applications:

WB, IF, Indirect ELISA

Species Specificity:

Human

Background Information

Fanconi anemia (FA) is a hereditary bone marrow failure syndrome associated with developmental defects and cancer predisposition. The FA nuclear core complex consists of FANCA, B, C, E, F, G, L, and M. FANCL is a RING-type E3 ubiquitin ligase that monoubiquitinates FANCD2 and FANCI, a key functional role facilitated by other members of the nuclear core complex (PMID: 23783032). FANCL plays an important role in the repair of cisplatin-induced DNA damage (PMID: 26385482) and participates directly in support of stem cell function (PMID: 23783032). FANCL can be detected as 40-43 kDa (full-length) and ~28 kDa.

Storage

Storage:

Store at -80°C.

Storage Buffer:

PBS Only

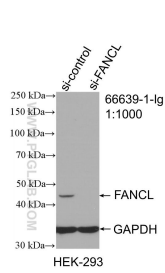
For technical support and original validation data for this product please contact:

T: 1 (888) 4PTGLAB (1-888-478-4522) (toll free in USA), or 1(312) 455-8498 (outside USA)

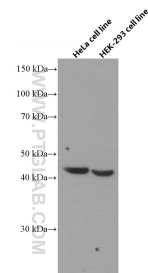
E: proteintech@ptglab.com
W: ptglab.com

This product is exclusively available under Proteintech Group brand and is not available to purchase from any other manufacturer.

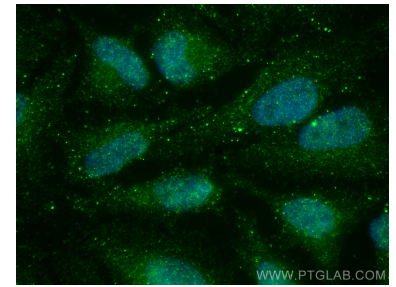
Selected Validation Data



WB result of FANCL antibody (66639-1-Ig; 1:1000; incubated at room temperature for 1.5 hours) with sh-Control and sh-FANCL transfected HEK-293 cells. This data was developed using the same antibody clone with 66639-1-PBS in a different storage buffer formulation.



HeLa cells and HEK-293 cells were subjected to SDS PAGE followed by western blot with 66639-1-Ig (FANCL antibody) at dilution of 1:2000 incubated at room temperature for 1.5 hours. This data was developed using the same antibody clone with 66639-1-PBS in a different storage buffer formulation.



Immunofluorescent analysis of (4% PFA) fixed HeLa cells using FANCL antibody (66639-1-Ig, Clone: 6E2B6) at dilution of 1:800 and CoraLite®488-Conjugated AffiniPure Goat Anti-Mouse IgG(H+L). This data was developed using the same antibody clone with 66639-1-PBS in a different storage buffer formulation.