

For Research Use Only

# ROCK2 Monoclonal antibody, PBS Only



Catalog Number: 66633-1-PBS

Featured Product

## Basic Information

Catalog Number:

66633-1-PBS

Size:

100ug, Concentration: 1 mg/ml by Nanodrop;

Source:

Mouse

Isotype:

IgG2b

Immunogen Catalog Number:

AG16330

GenBank Accession Number:

BC111801

GeneID (NCBI):

9475

UNIPROT ID:

O75116

Full Name:

Rho-associated, coiled-coil containing protein kinase 2

Calculated MW:

77 kDa, 161 kDa

Observed MW:

161 kDa

Purification Method:

Protein A purification

CloneNo.:

1C7B8

## Applications

Tested Applications:

WB, IHC, Indirect ELISA

Species Specificity:

Human, Rat, Mouse

## Background Information

ROCK2 is a serine/threonine kinase that regulates cytokinesis, smooth muscle contraction, the formation of actin stress fibers and focal adhesions, and the activation of the c-fos serum response element. It is an isozyme of ROCK1, is a target for the small GTPase Rho. ROCK2 is localized in both cytoplasm and nucleus, and the nucleus-localized ROCK2 can target p300 for phosphorylation to regulate its acetyltransferase activity (PMID:16574662). This antibody is specific to ROCK2.

## Storage

Storage:

Store at -80°C.

Storage Buffer:

PBS Only

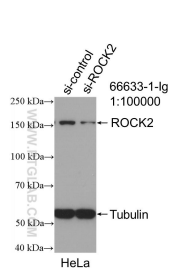
For technical support and original validation data for this product please contact:

T: 1 (888) 4PTGLAB (1-888-478-4522) (toll free in USA), or 1(312) 455-8498 (outside USA)

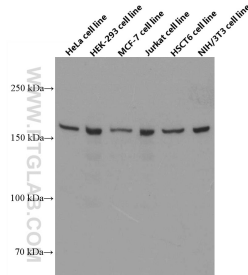
E: [proteintech@ptglab.com](mailto:proteintech@ptglab.com)  
W: [ptglab.com](http://ptglab.com)

This product is exclusively available under Proteintech Group brand and is not available to purchase from any other manufacturer.

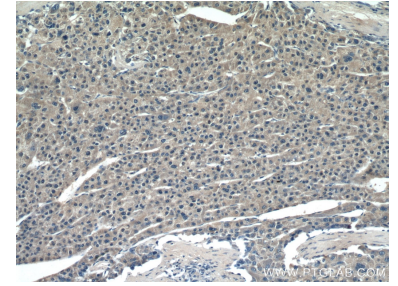
## Selected Validation Data



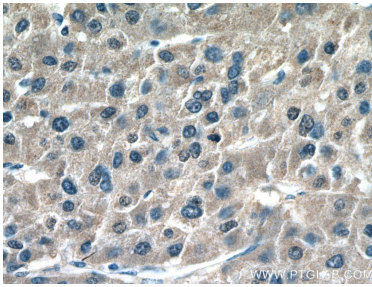
WB result of ROCK2 antibody (66633-1-Ig; 1:100000; incubated at room temperature for 1.5 hours) with sh-Control and sh-ROCK2 transfected HeLa cells. This data was developed using the same antibody clone with 66633-1-PBS in a different storage buffer formulation.



Various lysates were subjected to SDS PAGE followed by western blot with 66633-1-Ig (ROCK2 antibody) at dilution of 1:20000 incubated at room temperature for 1.5 hours. This data was developed using the same antibody clone with 66633-1-PBS in a different storage buffer formulation.



Immunohistochemical analysis of paraffin-embedded human liver cancer tissue slide using 66633-1-Ig (ROCK2 antibody) at dilution of 1:500 (under 10x lens). This data was developed using the same antibody clone with 66633-1-PBS in a different storage buffer formulation.



Immunohistochemical analysis of paraffin-embedded human liver cancer tissue slide using 66633-1-Ig (ROCK2 antibody) at dilution of 1:500 (under 40x lens). This data was developed using the same antibody clone with 66633-1-PBS in a different storage buffer formulation.