

For Research Use Only

Pyruvate Carboxylase Monoclonal antibody, PBS Only



Catalog Number: 66615-1-PBS

Featured Product

Basic Information

Catalog Number:

66615-1-PBS

Size:

100ug, Concentration: 1 mg/ml by Nanodrop;

Source:

Mouse

Isotype:

IgG2a

Immunogen Catalog Number:

AG8846

GenBank Accession Number:

BC011617

GeneID (NCBI):

5091

UNIPROT ID:

P11498

Full Name:

pyruvate carboxylase

Calculated MW:

1178 aa, 130 kDa

Observed MW:

130 kDa

Purification Method:

Protein A purification

CloneNo.:

4F5D1

Applications

Tested Applications:

WB, IHC, Indirect ELISA

Species Specificity:

Human, Rat, mouse

Storage

Storage:

Store at -80°C.

Storage Buffer:

PBS Only

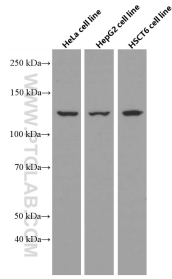
For technical support and original validation data for this product please contact:

T: 1 (888) 4PTGLAB (1-888-478-4522) (toll free in USA), or 1(312) 455-8498 (outside USA)

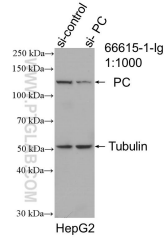
E: proteintech@ptglab.com
W: ptglab.com

This product is exclusively available under Proteintech Group brand and is not available to purchase from any other manufacturer.

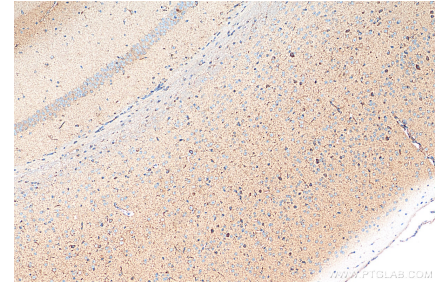
Selected Validation Data



Various lysates were subjected to SDS PAGE followed by western blot with 66615-1-Ig (Pyruvate Carboxylase antibody) at dilution of 1:5000 incubated at room temperature for 1.5 hours. This data was developed using the same antibody clone with 66615-1-PBS in a different storage buffer formulation.



WB result of Pyruvate Carboxylase antibody (66615-1-Ig; 1:1000; incubated at room temperature for 1.5 hours) with sh-Control and sh-Pyruvate Carboxylase transfected HepG2 cells. This data was developed using the same antibody clone with 66615-1-PBS in a different storage buffer formulation.



Immunohistochemical analysis of paraffin-embedded mouse brain tissue slide using 66615-1-Ig (Pyruvate Carboxylase antibody) at dilution of 1:200 (under 10x lens). Heat mediated antigen retrieval with Tris-EDTA buffer (pH 9.0). This data was developed using the same antibody clone with 66615-1-PBS in a different storage buffer formulation.