

For Research Use Only

PPP3CB Monoclonal antibody, PBS Only

Catalog Number: 66614-1-PBS

Featured Product



Basic Information

Catalog Number:

66614-1-PBS

Size:

100ug, Concentration: 1 mg/ml by Nanodrop;

Source:

Mouse

Isotype:

IgG1

Immunogen Catalog Number:

AG26987

GenBank Accession Number:

BC028049

GeneID (NCBI):

5532

UNIPROT ID:

P16298

Full Name:

protein phosphatase 3 (formerly 2B), catalytic subunit, beta isoform

Calculated MW:

525 aa, 59 kDa

Observed MW:

59 kDa

Purification Method:

Protein G purification

CloneNo.:

3C1A3

Applications

Tested Applications:

WB, IF/ICC, Indirect ELISA

Species Specificity:

human, mouse, rat, pig

Background Information

PPP3CB is one of the three isoforms of the A subunit of calcineurin (CnA). Calcineurin is a calcium-dependent serine/threonine phosphatase. It consists of two subunits: subunit A (CnA) and subunit B (CnB). For CnA, three isoforms PPP3CA (CnA α), PPP3CB (CnA β) and PPP3CC (CnA γ) have been identified. PPP3CB is a calcium-dependent, calmodulin-stimulated protein phosphatase. It may have a role in the calmodulin activation of calcineurin.

Storage

Storage:

Store at -80°C.

Storage Buffer:

PBS Only

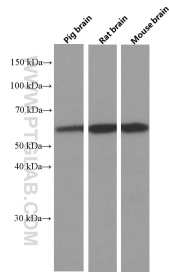
For technical support and original validation data for this product please contact:

T: 1 (888) 4PTGLAB (1-888-478-4522) (toll free in USA), or 1(312) 455-8498 (outside USA)

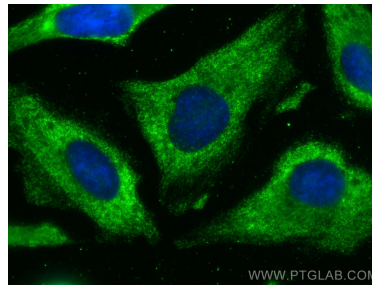
E: proteintech@ptglab.com
W: ptglab.com

This product is exclusively available under Proteintech Group brand and is not available to purchase from any other manufacturer.

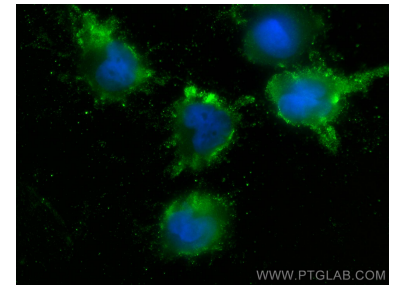
Selected Validation Data



Various lysates were subjected to SDS PAGE followed by western blot with 66614-1-Ig (PPP3CB antibody) at dilution of 1:10000 incubated at room temperature for 1.5 hours. This data was developed using the same antibody clone with 66614-1-PBS in a different storage buffer formulation.



Immunofluorescent analysis of (-20°C Ethanol) fixed HeLa cells using PPP3CB antibody (66614-1-Ig, Clone: 3C1A3) at dilution of 1:400 and CoraLite®488-Conjugated AffiniPure Goat Anti-Mouse IgG(H+L) (SA00013-1). This data was developed using the same antibody clone with 66614-1-PBS in a different storage buffer formulation.



Immunofluorescent analysis of (-20°C Ethanol) fixed U-251 cells using PPP3CB antibody (66614-1-Ig, Clone: 3C1A3) at dilution of 1:400 and CoraLite®488-Conjugated AffiniPure Goat Anti-Mouse IgG(H+L) (SA00013-1). This data was developed using the same antibody clone with 66614-1-PBS in a different storage buffer formulation.