

For Research Use Only

MMACHC Monoclonal antibody, PBS Only



Catalog Number: 66609-1-PBS

Basic Information

Catalog Number: 66609-1-PBS	GenBank Accession Number: BC006122	Purification Method: Protein A purification
Size: 100ug , Concentration: 1mg/ml by Nanodrop;	GeneID (NCBI): 25974	CloneNo.: 4G10A11
Source: Mouse	UNIPROT ID: Q9Y4U1	
Isotype: IgG1	Full Name: methylmalonic aciduria (cobalamin deficiency) cblC type, with homocystinuria	
Immunogen Catalog Number: AG15001	Calculated MW: 282 aa, 32 kDa	

Applications

Tested Applications:
ELISA, IF/ICC, WB

Species Specificity:
mouse, human

Background Information

MMACHC, also named as CblC, is located on chromosome 1 and comprises four coding exons. Human MMACHC catalyzes the reductive decyanation of cyanocobalamin and may serve as a trafficking chaperone for intracellular cobalamin. It also catalyzes the glutathione-dependent reductive demethylation of methylcobalamin, and, with much lower efficiency, the glutathione-dependent reductive demethylation of adenosylcobalamin. MMACHC binds cyanocobalamin, adenosylcobalamin, methylcobalamin and other, related vitamin B12 derivatives.

Storage

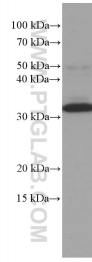
Storage:
Store at -80°C.

Storage Buffer:
PBS Only

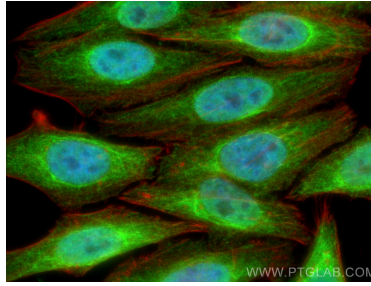
For technical support and original validation data for this product please contact:
T: 1 (888) 4PTGLAB (1-888-478-4522) (toll free in USA), or 1(312) 455-8498 (outside USA) E: proteintech@ptglab.com
W: ptglab.com

This product is exclusively available under Proteintech Group brand and is not available to purchase from any other manufacturer.

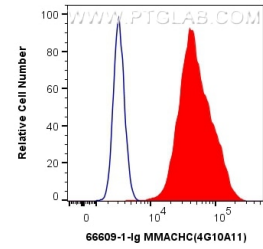
Selected Validation Data



HepG2 cells were subjected to SDS PAGE followed by western blot with 66609-1-Ig (MMACHC antibody) at dilution of 1:10000 incubated at room temperature for 1.5 hours. This data was developed using the same antibody clone with 66609-1-PBS in a different storage buffer formulation.



Immunofluorescent analysis of (4% PFA) fixed HepG2 cells using MMACHC antibody (66609-1-Ig, Clone: 4G10A11) at dilution of 1:400 and CoraLite®488-Conjugated AffiniPure Goat Anti-Mouse IgG(H+L), CL594-Phalloidin (red). This data was developed using the same antibody clone with 66609-1-PBS in a different storage buffer formulation.



1X10⁶ HeLa cells were intracellularly stained with 0.8 ug Anti-Human MMACHC (66609-1-Ig, Clone:4G10A11) and CoraLite®488-Conjugated AffiniPure Goat Anti-Mouse IgG(H+L) at dilution 1:1000 (red), or 0.8 ug Mouse IgG1 Isotype Control (MOPC-21) (65124-1-Ig, Clone: MOPC-21) (blue). Cells were fixed and permeabilized with Transcription Factor Staining Buffer Kit (PF00011). This data was developed using the same antibody clone with 66609-1-PBS in a