

For Research Use Only

Palladin Monoclonal antibody, PBS Only



Catalog Number: 66601-1-PBS

Basic Information

Catalog Number: 66601-1-PBS	GenBank Accession Number: BC013867	Purification Method: Protein A purification
Size: 100ug , Concentration: 1mg/ml by Nanodrop;	GeneID (NCBI): 23022	CloneNo.: 2A1F6
Source: Mouse	UNIPROT ID: Q8WX93	
Isotype: IgG2a	Full Name: palladin, cytoskeletal associated protein	
Immunogen Catalog Number: AG1288	Calculated MW: 1383 aa, 151 kDa	
	Observed MW: 151 kDa	

Applications

Tested Applications:
WB, IF, IHC, Indirect ELISA

Species Specificity:
Human, rat, pig

Storage

Storage:
Store at -80°C.

Storage Buffer:
PBS Only

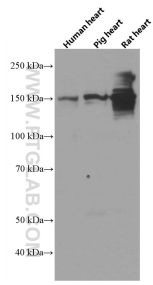
For technical support and original validation data for this product please contact:

T: 1 (888) 4PTGLAB (1-888-478-4522) (toll free in USA), or 1(312) 455-8498 (outside USA)

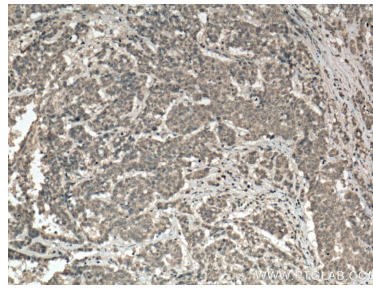
E: proteintech@ptglab.com
W: ptglab.com

This product is exclusively available under Proteintech Group brand and is not available to purchase from any other manufacturer.

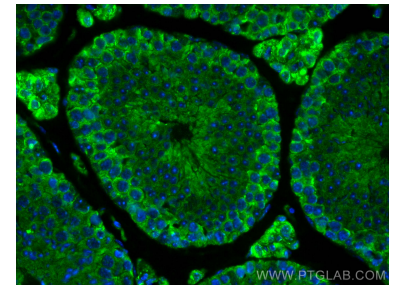
Selected Validation Data



Human heart tissue, pig heart tissue and rat heart tissue were subjected to SDS PAGE followed by western blot with 66601-1-Ig (Palladin antibody) at dilution of 1:2000 incubated at room temperature for 1.5 hours. This data was developed using the same antibody clone with 66601-1-PBS in a different storage buffer formulation.



Immunohistochemical analysis of paraffin-embedded human colon cancer tissue slide using 66601-1-Ig (Palladin antibody) at dilution of 1:200 (under 10x lens. Heat mediated antigen retrieval with Tris-EDTA buffer (pH 9.0). This data was developed using the same antibody clone with 66601-1-PBS in a different storage buffer formulation.



Immunofluorescent analysis of (4% PFA) fixed mouse testis tissue using PALLD, palladin antibody (66601-1-Ig, Clone: 2A1F6) at dilution of 1:400 and CoraLite®488-Conjugated AffiniPure Goat Anti-Mouse IgG(H+L). This data was developed using the same antibody clone with 66601-1-PBS in a different storage buffer formulation.