

For Research Use Only

ATPB Monoclonal antibody, PBS Only

Catalog Number: 66600-1-PBS



Basic Information

Catalog Number:

66600-1-PBS

Size:

100ug, Concentration: 1mg/ml by Nanodrop;

Source:

Mouse

Isotype:

IgG2b

Immunogen Catalog Number:

AG11177

GenBank Accession Number:

BC016512

GeneID (NCBI):

506

UNIPROT ID:

P06576

Full Name:

ATP synthase, H⁺ transporting, mitochondrial F1 complex, beta polypeptide

Calculated MW:

529 aa, 57 kDa

Observed MW:

45-57 kDa

Purification Method:

Protein A purification

CloneNo.:

1A11B9

Applications

Tested Applications:

WB, IF, IHC, Indirect ELISA

Species Specificity:

Human, Mouse, Rat

Background Information

ATP5B, also named as ATPMB and ATPSB, belongs to the ATPase alpha/beta chains family. It is a high affinity HDL receptor for apolipoprotein A1. ATP5B is a subunit of mitochondrial ATP synthase (F1F0 ATP synthase or Complex V). ATP5B has a calculated molecular mass of 57 kDa and ~5 kDa transit peptide can be removed in the mature form.

Storage

Storage:

Store at -80°C.

Storage Buffer:

PBS Only

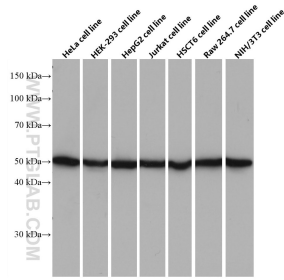
For technical support and original validation data for this product please contact:

T: 1 (888) 4PTGLAB (1-888-478-4522) (toll free in USA), or 1(312) 455-8498 (outside USA)

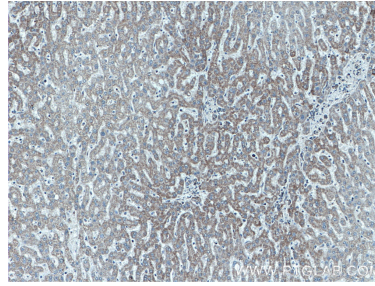
E: proteintech@ptglab.com
W: ptglab.com

This product is exclusively available under Proteintech Group brand and is not available to purchase from any other manufacturer.

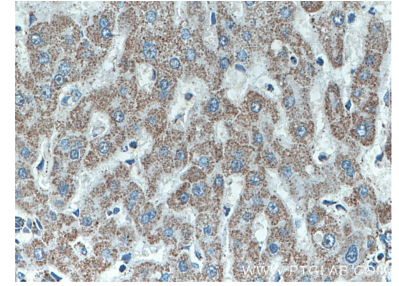
Selected Validation Data



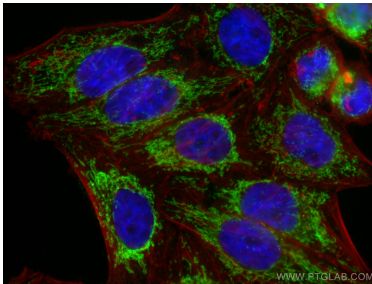
Various lysates were subjected to SDS PAGE followed by western blot with 66600-1-Ig (ATPB antibody) at dilution of 1:10000 incubated at room temperature for 1.5 hours. This data was developed using the same antibody clone with 66600-1-PBS in a different storage buffer formulation.



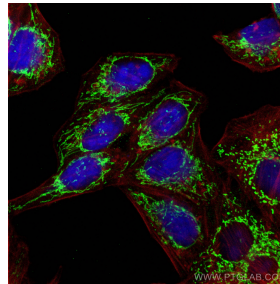
Immunohistochemical analysis of paraffin-embedded human liver tissue slide using 66600-1-Ig (ATPB antibody) at dilution of 1:500 (under 10x lens). This data was developed using the same antibody clone with 66600-1-PBS in a different storage buffer formulation.



Immunohistochemical analysis of paraffin-embedded human liver tissue slide using 66600-1-Ig (ATPB antibody) at dilution of 1:500 (under 40x lens). This data was developed using the same antibody clone with 66600-1-PBS in a different storage buffer formulation.



Immunofluorescent analysis of (4% PFA) fixed HepG2 cells using ATPB antibody (66600-1-Ig, Clone: 1A11B9) at dilution of 1:1000 and CoraLite®488-Conjugated AffiniPure Goat Anti-Mouse IgG(H+L) (SA00013-1), CL594-Phalloidin (red). This data was developed using the same antibody clone with 66600-1-PBS in a different storage buffer formulation.



Immunofluorescent analysis of (4% PFA) fixed HepG2 cells using ATPB antibody (66600-1-Ig, Clone: 1A11B9) at dilution of 1:1000 and CoraLite®488-Conjugated AffiniPure Goat Anti-Mouse IgG(H+L) (SA00013-1), CL594-Phalloidin (red). This data was developed using the same antibody clone with 66600-1-PBS in a different storage buffer formulation.