

For Research Use Only

CHCHD6 Monoclonal antibody, PBS Only (Capture)

Catalog Number: 66597-1-PBS



Basic Information

Catalog Number: 66597-1-PBS	GenBank Accession Number: BC006123	Purification Method: Protein A purification
Size: 100ug, Concentration: 1mg/ml by Nanodrop;	GeneID (NCBI): 84303	CloneNo.: 2A11E9
Source: Mouse	UNIPROT ID: Q9BRQ6	
Isotype: IgG2a	Full Name: coiled-coil-helix-coiled-coil-helix domain containing 6	
Immunogen Catalog Number: AG14700	Calculated MW: 235 aa, 26 kDa	
	Observed MW: 26-29 kDa	

Applications

Tested Applications:
WB, IF/ICC, Cytometric bead array, Indirect ELISA

Species Specificity:
human

Product Information

66597-1-PBS targets CHCHD6 as part of a matched antibody pair:

MP50477-2: 66597-1-PBS capture and 66597-4-PBS detection (validated in Cytometric bead array)

MP50477-4: 66597-1-PBS capture and 66597-3-PBS detection (validated in Cytometric bead array)

Unconjugated mouse monoclonal antibody pair in PBS only (BSA and azide free) storage buffer at a concentration of 1 mg/mL, ready for conjugation.

This conjugation ready format makes antibodies ideal for use in many applications including: ELISAs, multiplex assays requiring matched pairs, mass cytometry, and multiplex imaging applications. Antibody use should be optimized by the end user for each application and assay.

Storage

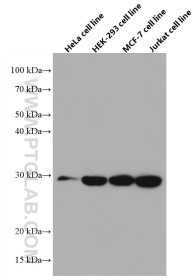
Storage:
Store at -80°C.

Storage Buffer:
PBS Only

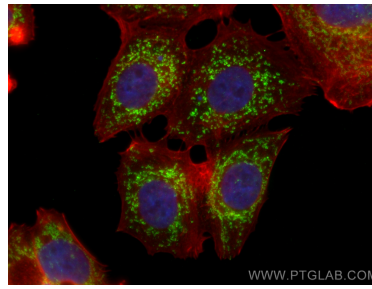
For technical support and original validation data for this product please contact:
T: 1 (888) 4PTGLAB (1-888-478-4522) (toll free in USA), or 1(312) 455-8498 (outside USA) E: proteintech@ptglab.com
W: ptglab.com

This product is exclusively available under Proteintech Group brand and is not available to purchase from any other manufacturer.

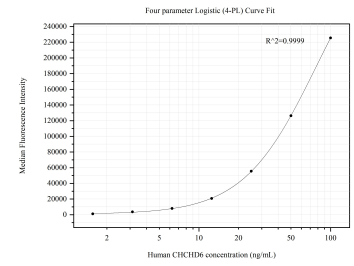
Selected Validation Data



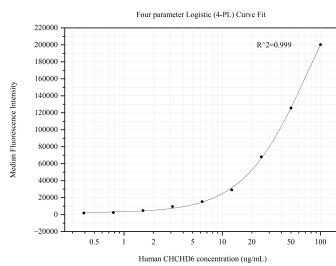
Various lysates were subjected to SDS PAGE followed by western blot with 66597-1-Ig (CHCHD6 antibody) at dilution of 1:3000 incubated at room temperature for 1.5 hours. This data was developed using the same antibody clone with 66597-1-PBS in a different storage buffer formulation.



Immunofluorescent analysis of (4% PFA) fixed MCF-7 cells using CHCHD6 antibody (66597-1-Ig, Clone: 2A11E9) at dilution of 1:800 and CoraLite®488-Conjugated AffiniPure Goat Anti-Mouse IgG(H+L), CL594-Phalloidin (red). This data was developed using the same antibody clone with 66597-1-PBS in a different storage buffer formulation.



Cytometric bead array standard curve of MP50477-2, CHCHD6 Monoclonal Matched Antibody Pair, PBS Only. Capture antibody: 66597-1-PBS. Detection antibody: 66597-4-PBS. Standard: Ag14700. Range: 1.563-100 ng/mL.



Cytometric bead array standard curve of MP50477-4, CHCHD6 Monoclonal Matched Antibody Pair, PBS Only. Capture antibody: 66597-1-PBS. Detection antibody: 66597-3-PBS. Standard: Ag14700. Range: 0.391-100 ng/mL.