

For Research Use Only

ACAP1 Monoclonal antibody

Catalog Number: 66596-1-Ig

Featured Product

1 Publications



Basic Information

Catalog Number: 66596-1-Ig	GenBank Accession Number: BC018543	Purification Method: Protein G purification
Size: 150ul, Concentration: 1600 µg/ml by Nanodrop and 1000 µg/ml by Bradford method using BSA as the standard;	GeneID (NCBI): 9744	CloneNo.: 1B4C9
Source: Mouse	UNIPROT ID: Q15027	Recommended Dilutions: WB 1:1000-1:6000 IHC 1:150-1:600
Isotype: IgG1	Full Name: ArfGAP with coiled-coil, ankyrin repeat and PH domains 1	
Immunogen Catalog Number: AG14254	Calculated MW: 740 aa, 82 kDa	
	Observed MW: 81 kDa	

Applications

Tested Applications: WB, IHC, ELISA	Positive Controls: WB : Jurkat cells, HL-60 cells, K-562 cells IHC : human breast cancer tissue,
Cited Applications: WB	
Species Specificity: human	
Cited Species: human	
Note-IHC: suggested antigen retrieval with TE buffer pH 9.0; (*) Alternatively, antigen retrieval may be performed with citrate buffer pH 6.0	

Background Information

ACAP1, also named as Centaurin-beta-1, is a 740 amino acid protein, which is expressed Highly in lung and spleen. ACAP1 as a GTPase-activating protein (GAP) for ADP ribosylation factor 6 (ARF6) is required for clathrin-dependent export of proteins from recycling endosomes to trans-Golgi network and cell surface and required for regulated export of ITGB1 from recycling endosomes to the cell surface and ITGB1-dependent cell migration.

Notable Publications

Author	Pubmed ID	Journal	Application
Qiyi Yi	36497434	Cancers (Basel)	WB

Storage

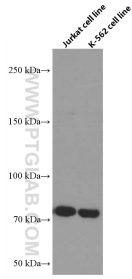
Storage:
Store at -20°C. Stable for one year after shipment.
Storage Buffer:
PBS with 0.02% sodium azide and 50% glycerol pH 7.3.
Aliquoting is unnecessary for -20°C storage

*** 20ul sizes contain 0.1% BSA

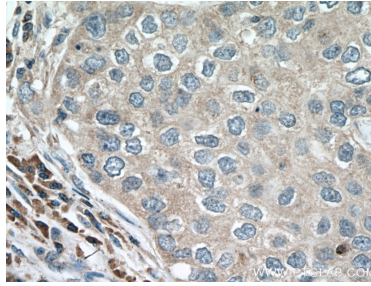
For technical support and original validation data for this product please contact:
T: 1 (888) 4PTGLAB (1-888-478-4522) (toll free in USA), or 1(312) 455-8498 (outside USA)
E: proteintech@ptglab.com
W: ptglab.com

This product is exclusively available under Proteintech Group brand and is not available to purchase from any other manufacturer.

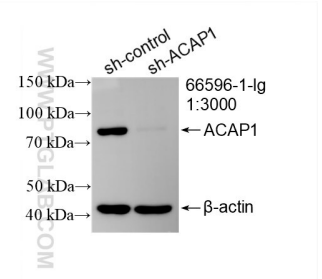
Selected Validation Data



Various lysates were subjected to SDS PAGE followed by western blot with 66596-1-Ig (ACAP1 antibody) at dilution of 1:3000 incubated at room temperature for 1.5 hours.



Immunohistochemical analysis of paraffin-embedded human breast cancer tissue slide using 66596-1-Ig (ACAP1 antibody) at dilution of 1:300 (under 40x lens. Heat mediated antigen retrieval with Tris-EDTA buffer (pH 9.0).



WB result of ACAP1 antibody (66596-1-Ig; 1:3000; incubated at room temperature for 1.5 hours) with sh-Control and sh-ACAP1 transfected Jurkat cells.