

For Research Use Only

# MRPL23 Monoclonal antibody, PBS Only



Catalog Number: 66595-1-PBS

## Basic Information

<b>Catalog Number:</b> 66595-1-PBS	<b>GenBank Accession Number:</b> BC027710	<b>Purification Method:</b> Protein A purification
<b>Size:</b> 100ug, Concentration: 1 mg/ml by Nanodrop;	<b>GeneID (NCBI):</b> 6150	<b>CloneNo.:</b> 1G11C4
<b>Source:</b> Mouse	<b>UNIPROT ID:</b> Q16540	
<b>Isotype:</b> IgG2a	<b>Full Name:</b> mitochondrial ribosomal protein L23	
<b>Immunogen Catalog Number:</b> AG2220	<b>Calculated MW:</b> 153 aa, 18 kDa	
	<b>Observed MW:</b> 18 kDa	

## Applications

**Tested Applications:**  
WB, IF, IHC, Indirect ELISA

**Species Specificity:**  
Human

## Storage

**Storage:**  
Store at -80°C.

**Storage Buffer:**  
PBS Only

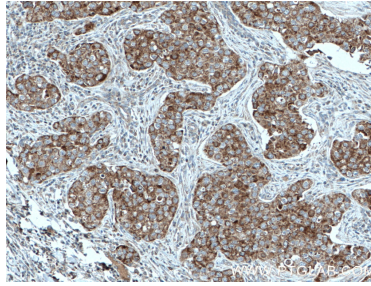
For technical support and original validation data for this product please contact:  
T: 1 (888) 4PTGLAB (1-888-478-4522) (toll free in USA), or 1(312) 455-8498 (outside USA)      E: [proteintech@ptglab.com](mailto:proteintech@ptglab.com)  
W: [ptglab.com](http://ptglab.com)

This product is exclusively available under Proteintech Group brand and is not available to purchase from any other manufacturer.

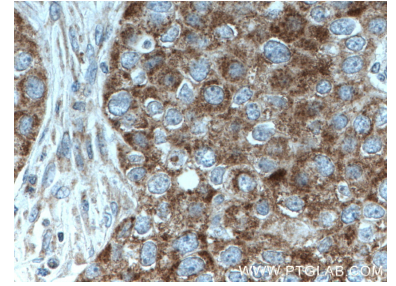
## Selected Validation Data



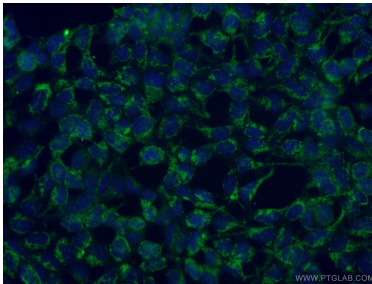
HEK-293 cells were subjected to SDS PAGE followed by western blot with 66595-1-Ig (MRPL23 antibody) at dilution of 1:10000 incubated at room temperature for 1.5 hours. This data was developed using the same antibody clone with 66595-1-PBS in a different storage buffer formulation.



Immunohistochemical analysis of paraffin-embedded human breast cancer tissue slide using 66595-1-Ig (MRPL23 antibody) at dilution of 1:500 (under 10x lens. Heat mediated antigen retrieval with Tris-EDTA buffer (pH 9.0). This data was developed using the same antibody clone with 66595-1-PBS in a different storage buffer formulation.



Immunohistochemical analysis of paraffin-embedded human breast cancer tissue slide using 66595-1-Ig (MRPL23 antibody) at dilution of 1:500 (under 40x lens. Heat mediated antigen retrieval with Tris-EDTA buffer (pH 9.0). This data was developed using the same antibody clone with 66595-1-PBS in a different storage buffer formulation.



Immunofluorescent analysis of (4% PFA) fixed HEK-293 cells using 66595-1-Ig (MRPL23 antibody) at dilution of 1:100 and Alexa Fluor 488-conjugated AffiniPure Goat Anti-Mouse IgG(H+L). This data was developed using the same antibody clone with 66595-1-PBS in a different storage buffer formulation.