

For Research Use Only

# SDHA Monoclonal antibody, PBS Only (Capture/Detector)

Catalog Number: 66588-2-PBS



## Basic Information

Catalog Number:

66588-2-PBS

Size:

100ug, Concentration: 1 mg/ml by  
Nanodrop;

Source:

Mouse

Isotype:

IgG1

Immunogen Catalog Number:

AG7023

GenBank Accession Number:

BC001380

GeneID (NCBI):

6389

UNIPROT ID:

P31040

Full Name:

succinate dehydrogenase complex,  
subunit A, flavoprotein (Fp)

Calculated MW:

73 kDa

Purification Method:

Protein G Magarose purification

CloneNo.:

1C12C12

## Applications

Tested Applications:

Cytometric bead array, Indirect ELISA

Species Specificity:

human

## Product Information

66588-2-PBS targets SDHA as part of a matched antibody pair:

MP50790-1: 66588-1-PBS capture and 66588-2-PBS detection (validated in Cytometric bead array)

MP50790-4: 66588-2-PBS capture and 66588-3-PBS detection (validated in Cytometric bead array)

Unconjugated mouse monoclonal antibody pair in PBS only (BSA and azide free) storage buffer at a concentration of 1 mg/mL, ready for conjugation.

This conjugation ready format makes antibodies ideal for use in many applications including: ELISAs, multiplex assays requiring matched pairs, mass cytometry, and multiplex imaging applications. Antibody use should be optimized by the end user for each application and assay.

## Storage

Storage:

Store at -80°C.

Storage Buffer:

PBS Only

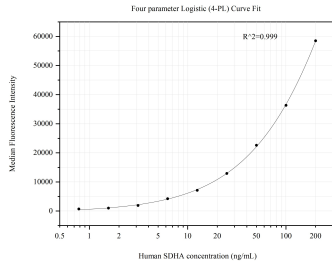
For technical support and original validation data for this product please contact:

T: 1 (888) 4PTGLAB (1-888-478-4522) (toll free  
in USA), or 1(312) 455-8498 (outside USA)

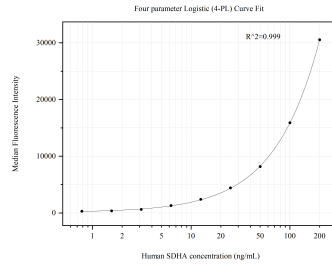
E: [proteintech@ptglab.com](mailto:proteintech@ptglab.com)  
W: [ptglab.com](http://ptglab.com)

This product is exclusively available under Proteintech Group brand and is not available to purchase from any other manufacturer.

## Selected Validation Data



Cytometric bead array standard curve of MP50790-1, SDHA Monoclonal Matched Antibody Pair, PBS Only. Capture antibody: 66588-1-PBS. Detection antibody: 66588-2-PBS. Standard:Ag7023. Range: 0.781-200 ng/mL.



Cytometric bead array standard curve of MP50790-4, SDHA Monoclonal Matched Antibody Pair, PBS Only. Capture antibody: 66588-2-PBS. Detection antibody: 66588-3-PBS. Standard:Ag7023. Range: 0.781-200 ng/mL.