

For Research Use Only

WBP2 Monoclonal antibody, PBS Only



Catalog Number: 66585-1-PBS

Featured Product

Basic Information

Catalog Number:

66585-1-PBS

Size:

100ug, Concentration: 1 mg/ml by Nanodrop;

Source:

Mouse

Isotype:

IgG1

Immunogen Catalog Number:

AG2661

GenBank Accession Number:

BC010616

GeneID (NCBI):

23558

UNIPROT ID:

Q969T9

Full Name:

WW domain binding protein 2

Calculated MW:

261 aa, 28 kDa

Observed MW:

30-40 kDa

Purification Method:

Protein G purification

CloneNo.:

2B4G7

Applications

Tested Applications:

WB, IF, IHC, Indirect ELISA

Species Specificity:

Human, mouse

Storage

Storage:

Store at -80°C.

Storage Buffer:

PBS Only

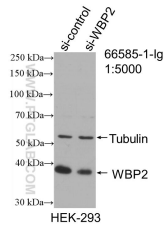
For technical support and original validation data for this product please contact:

T: 1 (888) 4PTGLAB (1-888-478-4522) (toll free in USA), or 1(312) 455-8498 (outside USA)

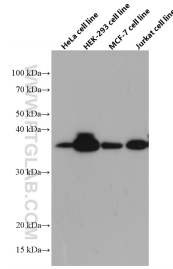
E: proteintech@ptglab.com
W: ptglab.com

This product is exclusively available under Proteintech Group brand and is not available to purchase from any other manufacturer.

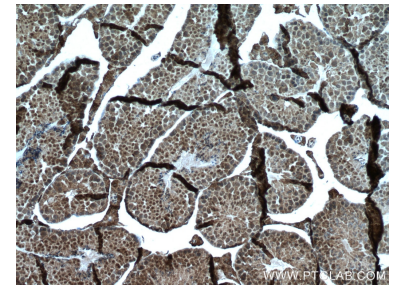
Selected Validation Data



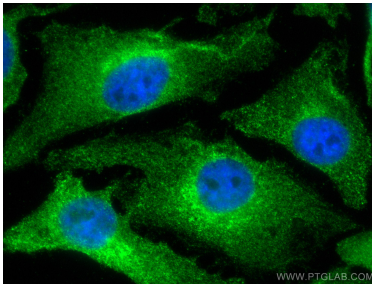
WB result of WBP2 antibody (66585-1-Ig; 1:5000; incubated at room temperature for 1.5 hours) with sh-Control and sh-WBP2 transfected HEK-293 cells. This data was developed using the same antibody clone with 66585-1-PBS in a different storage buffer formulation.



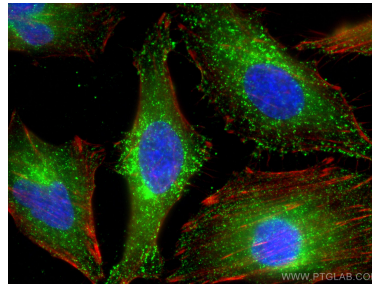
HeLa cells were subjected to SDS PAGE followed by western blot with 66585-1-Ig (WBP2 antibody) at dilution of 1:5000 incubated at room temperature for 1.5 hours. This data was developed using the same antibody clone with 66585-1-PBS in a different storage buffer formulation.



Immunohistochemical analysis of paraffin-embedded mouse testis tissue slide using 66585-1-Ig (WBP2 antibody) at dilution of 1:500 (under 10x lens). Heat mediated antigen retrieval with Tris-EDTA buffer (pH 9.0). This data was developed using the same antibody clone with 66585-1-PBS in a different storage buffer formulation.



Immunofluorescent analysis of (4% PFA) fixed HeLa cells using WBP2 antibody (66585-1-Ig, Clone: 2B4G7) at dilution of 1:800 and CoraLite®488-Conjugated AffiniPure Goat Anti-Mouse IgG(H+L). This data was developed using the same antibody clone with 66585-1-PBS in a different storage buffer formulation.



Immunofluorescent analysis of (-20°C Ethanol) fixed HeLa cells using WBP2 antibody (66585-1-Ig, Clone: 2B4G7) at dilution of 1:800 and CoraLite®488-Conjugated AffiniPure Goat Anti-Mouse IgG(H+L), CL594-Phalloidin (red). This data was developed using the same antibody clone with 66585-1-PBS in a different storage buffer formulation.