

For Research Use Only

# CD100 Monoclonal antibody, PBS Only (Capture/Detector)



Catalog Number: 66582-2-PBS

## Basic Information

**Catalog Number:**

66582-2-PBS

**Size:**

100ug , Concentration: 1 mg/ml by Nanodrop;

**Source:**

Mouse

**Isotype:**

IgG1

**Immunogen Catalog Number:**

AG26461

**GenBank Accession Number:**

BC054500

**GeneID (NCBI):**

10507

**UNIPROT ID:**

Q92854

**Full Name:**

sema domain, immunoglobulin domain (Ig), transmembrane domain (TM) and short cytoplasmic domain, (semaphorin) 4D

**Calculated MW:**

96 kDa

**Purification Method:**

Protein G purification

**CloneNo.:**

1B3G8

## Applications

**Tested Applications:**

Cytometric bead array, Indirect ELISA

**Species Specificity:**

human

## Product Information

66582-2-PBS targets CD100 as part of a matched antibody pair:

MP50276-1: 66582-2-PBS capture and 66582-3-PBS detection (validated in Cytometric bead array)

MP50276-2: 66582-4-PBS capture and 66582-2-PBS detection (validated in Cytometric bead array)

Unconjugated mouse monoclonal antibody pair in PBS only (BSA and azide free) storage buffer at a concentration of 1 mg/mL, ready for conjugation.

This conjugation ready format makes antibodies ideal for use in many applications including: ELISAs, multiplex assays requiring matched pairs, mass cytometry, and multiplex imaging applications. Antibody use should be optimized by the end user for each application and assay.

## Storage

**Storage:**

Store at -80°C.

**Storage Buffer:**

PBS Only

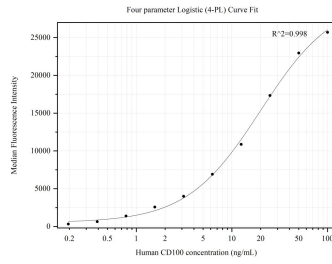
For technical support and original validation data for this product please contact:

T: 1 (888) 4PTGLAB (1-888-478-4522) (toll free in USA), or 1(312) 455-8498 (outside USA)

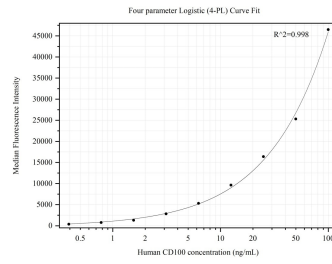
E: [proteintech@ptglab.com](mailto:proteintech@ptglab.com)  
W: [ptglab.com](http://ptglab.com)

**This product is exclusively available under Proteintech Group brand and is not available to purchase from any other manufacturer.**

## Selected Validation Data



Cytometric bead array standard curve of MP50276-1, CD100 Monoclonal Matched Antibody Pair, PBS Only. Capture antibody: 66582-2-PBS. Detection antibody: 66582-3-PBS. Standard: Ag26461. Range: 0.195-100 ng/mL.



Cytometric bead array standard curve of MP50276-2, CD100 Monoclonal Matched Antibody Pair, PBS Only. Capture antibody: 66582-4-PBS. Detection antibody: 66582-2-PBS. Standard: Ag26461. Range: 0.391-100 ng/mL.