

For Research Use Only

# SLC9A9 Monoclonal antibody

Catalog Number: 66577-1-Ig **1 Publications**



## Basic Information

<b>Catalog Number:</b> 66577-1-Ig	<b>GenBank Accession Number:</b> BC035779	<b>Purification Method:</b> Protein A purification
<b>Size:</b> 150ul , Concentration: 2500 ug/ml by Nanodrop and 1000 ug/ml by Bradford method using BSA as the standard;	<b>GeneID (NCBI):</b> 285195	<b>CloneNo.:</b> 1B8D9
<b>Source:</b> Mouse	<b>UNIPROT ID:</b> Q8IVB4	<b>Recommended Dilutions:</b> WB 1:2000-1:10000 IHC 1:250-1:1000 IF/ICC 1:400-1:1600
<b>Isotype:</b> IgG2a	<b>Full Name:</b> solute carrier family 9 (sodium/hydrogen exchanger), member 9	
<b>Immunogen Catalog Number:</b> AG4660	<b>Calculated MW:</b> 645 aa, 73 kDa	
	<b>Observed MW:</b> 73 kDa	

## Applications

**Tested Applications:**  
WB, IHC, IF/ICC, ELISA

**Cited Applications:**  
WB, IHC

**Species Specificity:**  
Human, Mouse, Rat

**Cited Species:**  
human

**Note-IHC: suggested antigen retrieval with TE buffer pH 9.0; (\*) Alternatively, antigen retrieval may be performed with citrate buffer pH 6.0**

**Positive Controls:**

**WB :** HeLa cells, HEK-293 cells, MCF-7 cells, HepG2 cells, HSC-T6 cells, NIH/3T3 cells, RAW 264.7 cells

**IHC :** human kidney tissue, human tonsillitis tissue, human liver cancer tissue

**IF/ICC :** HepG2 cells,

## Notable Publications

Author	Pubmed ID	Journal	Application
Deng Guang	38824966	Biochem Pharmacol	WB,IHC

## Storage

**Storage:**

Store at -20°C. Stable for one year after shipment.

**Storage Buffer:**

PBS with 0.02% sodium azide and 50% glycerol pH 7.3.

Aliquoting is unnecessary for -20°C storage

\*\*\* 20ul sizes contain 0.1% BSA

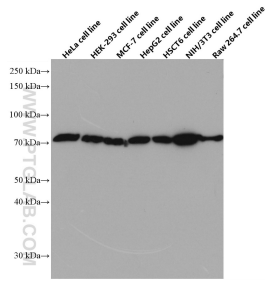
For technical support and original validation data for this product please contact:

T: 1 (888) 4PTGLAB (1-888-478-4522) (toll free in USA), or 1(312) 455-8498 (outside USA)

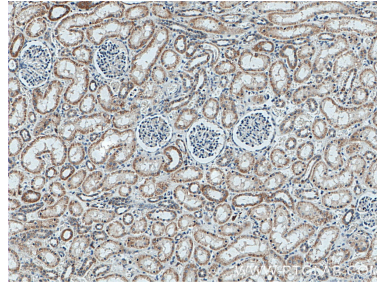
E: proteintech@ptglab.com  
W: ptglab.com

This product is exclusively available under Proteintech Group brand and is not available to purchase from any other manufacturer.

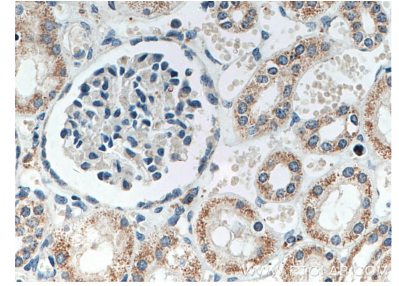
## Selected Validation Data



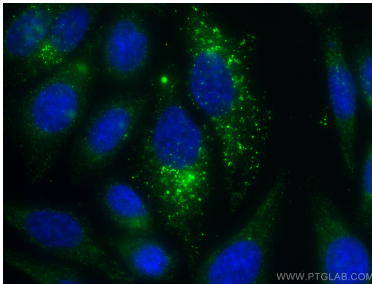
Various lysates were subjected to SDS PAGE followed by western blot with 66577-1-Ig (SLC9A9 antibody) at dilution of 1:5000 incubated at room temperature for 1.5 hours.



Immunohistochemical analysis of paraffin-embedded human kidney tissue slide using 66577-1-Ig (SLC9A9 antibody) at dilution of 1:500 (under 10x lens. Heat mediated antigen retrieval with Tris-EDTA buffer (pH 9.0).



Immunohistochemical analysis of paraffin-embedded human kidney tissue slide using 66577-1-Ig (SLC9A9 antibody) at dilution of 1:500 (under 40x lens. Heat mediated antigen retrieval with Tris-EDTA buffer (pH 9.0).



Immunofluorescent analysis of (-20°C Ethanol) fixed HepG2 cells using SLC9A9 antibody (66577-1-Ig, Clone: 1B8D9 ) at dilution of 1:800 and CoraLite®488-Conjugated Goat Anti-Mouse IgG(H+L).