

For Research Use Only

CIN85 Monoclonal antibody, PBS Only



Catalog Number: 66571-1-PBS

Basic Information

Catalog Number: 66571-1-PBS	GenBank Accession Number: BC015806	Purification Method: Protein G purification
Size: 100ug , Concentration: 1 mg/ml by Nanodrop;	GeneID (NCBI): 30011	CloneNo.: 3C12D2
Source: Mouse	UNIPROT ID: Q96B97	
Isotype: IgG1	Full Name: SH3-domain kinase binding protein 1	
Immunogen Catalog Number: AG2777	Calculated MW: 665 aa, 73 kDa	
	Observed MW: 85 kDa	

Applications

Tested Applications:
WB, Indirect ELISA

Species Specificity:
Human, mouse, rat

Background Information

CIN85 is identified as a Cbl-interacting protein of 85 kDa and belongs to adaptor/scaffold proteins. It composed of three N-terminal SH3 domains followed by a proline-rich region and a C-terminal coiled-coil region. In association with c-Cbl (Casitas B-lineage lymphoma), an E3 ubiquitin ligase. As an adaptor protein, CIN85 is involved in Cbl-dependent EGFR internalization, intracellular receptor trafficking, sorting and degradation. Moreover, through the SH3 domains and the proline-rich region, CIN85 is implicated in many protein-protein interactions and it is found to play important roles in other processes such as apoptosis, rearrangement of actin cytoskeleton, cell adhesion, immunological synapse, cell migration and invasion.

Storage

Storage:
Store at -80°C.

Storage Buffer:
PBS Only

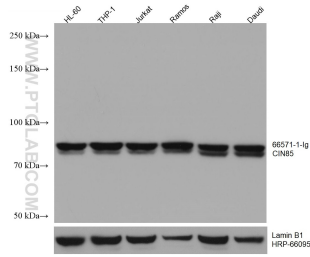
For technical support and original validation data for this product please contact:

T: 1 (888) 4PTGLAB (1-888-478-4522) (toll free in USA), or 1(312) 455-8498 (outside USA)

E: proteintech@ptglab.com
W: ptglab.com

This product is exclusively available under Proteintech Group brand and is not available to purchase from any other manufacturer.

Selected Validation Data



Various lysates were subjected to SDS PAGE followed by western blot with 66571-1-Ig (CIN85 antibody) at dilution of 1:5000 incubated at room temperature for 1.5 hours. The membrane was stripped and reblotted with HRP-conjugated Lamin B1 Monoclonal antibody (HRP-66095) as loading control. This data was developed using the same antibody clone with 66571-1-PBS in a different storage buffer formulation.