

For Research Use Only

# TLR5 Monoclonal antibody, PBS Only

Catalog Number: 66570-1-PBS



## Basic Information

<b>Catalog Number:</b> 66570-1-PBS	<b>GenBank Accession Number:</b> BC109119	<b>Purification Method:</b> Protein G purification
<b>Size:</b> 100ug , Concentration: 1mg/ml by Nanodrop;	<b>GeneID (NCBI):</b> 7100	<b>CloneNo.:</b> 4B3D2
<b>Source:</b> Mouse	<b>UNIPROT ID:</b> O60602	
<b>Isotype:</b> IgG1	<b>Full Name:</b> toll-like receptor 5	
<b>Immunogen Catalog Number:</b> AG13840	<b>Calculated MW:</b> 858 aa, 98 kDa	
	<b>Observed MW:</b> 100 kDa	

## Applications

**Tested Applications:**  
ELISA, IF/ICC, WB

**Species Specificity:**  
pig, rat, mouse, human

## Background Information

TLR5 belongs to the Toll-like receptor family which are important in the innate immune response to pathogens. TLRs are highly conserved from Drosophila to humans and share structural and functional similarities. TLR5 is known to recognize bacterial flagellin from invading mobile bacteria. TLR5 acts via MYD88 and TRAF6, leading to NF-kappa-B activation, cytokine secretion and the inflammatory response. Mutations in TLR5 gene have been associated with both resistance and susceptibility to systemic lupus erythematosus, and susceptibility to Legionnaire disease.

## Storage

**Storage:**  
Store at -80°C.

**Storage Buffer:**  
PBS Only

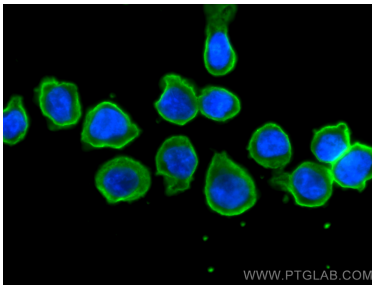
For technical support and original validation data for this product please contact:

T: 1 (888) 4PTGLAB (1-888-478-4522) (toll free in USA), or 1(312) 455-8498 (outside USA)

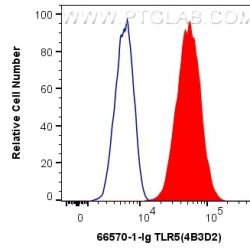
E: [proteintech@ptglab.com](mailto:proteintech@ptglab.com)  
W: [ptglab.com](http://ptglab.com)

**This product is exclusively available under Proteintech Group brand and is not available to purchase from any other manufacturer.**

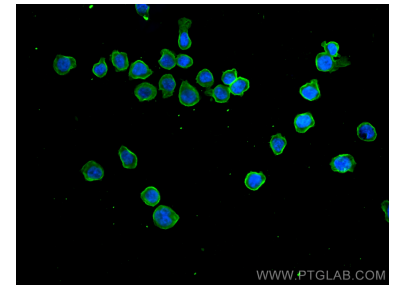
## Selected Validation Data



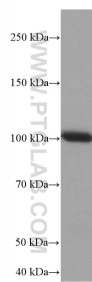
Immunofluorescent analysis of (4% PFA) fixed THP-1 cells using TLR5 antibody (66570-1-Ig, Clone: 4B3D2 ) at dilution of 1:800 and CoraLite®488-Conjugated AffiniPure Goat Anti-Mouse IgG(H+L). This data was developed using the same antibody clone with 66570-1-PBS in a different storage buffer formulation.



1X10<sup>6</sup> THP-1 cells were intracellularly stained with 0.4 ug Anti-Human TLR5 (66570-1-Ig, Clone:4B3D2) and CoraLite®488-Conjugated AffiniPure Goat Anti-Mouse IgG(H+L) at dilution 1:1000 (red), or 0.4 ug Mouse IgG1 Isotype Control (MOPC-21) (65124-1-Ig, Clone: MOPC-21) (blue). Cells were fixed with 4% PFA and permeabilized with Flow Cytometry Perm Buffer (PF00011-C). This data was developed using the same antibody clone with 66570-1-PBS in a



Immunofluorescent analysis of (4% PFA) fixed THP-1 cells using TLR5 antibody (66570-1-Ig, Clone: 4B3D2 ) at dilution of 1:800 and CoraLite®488-Conjugated AffiniPure Goat Anti-Mouse IgG(H+L). This data was developed using the same antibody clone with 66570-1-PBS in a different storage buffer formulation.



A549 cells were subjected to SDS PAGE followed by western blot with 66570-1-Ig (TLR5 antibody) at dilution of 1:3000 incubated at room temperature for 1.5 hours. This data was developed using the same antibody clone with 66570-1-PBS in a different storage buffer formulation.