

For Research Use Only

BCL10 Monoclonal antibody, PBS Only



Catalog Number: 66556-1-PBS

Basic Information

Catalog Number: 66556-1-PBS	GenBank Accession Number: BC053617	Purification Method: Protein A purification
Size: 100ug, Concentration: 1 mg/ml by Nanodrop;	GeneID (NCBI): 8915	CloneNo.: 2E8G5
Source: Mouse	UNIPROT ID: O95999	
Isotype: IgG1	Full Name: B-cell CLL/lymphoma 10	
Immunogen Catalog Number: AG12162	Calculated MW: 233 aa, 26 kDa	
	Observed MW: 30-32 kDa	

Applications

Tested Applications:
Indirect ELISA, IF/ICC, IHC, WB

Species Specificity:
human

Storage

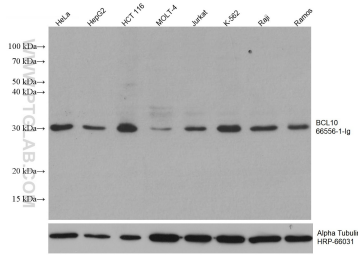
Storage:
Store at -80°C.

Storage Buffer:
PBS Only

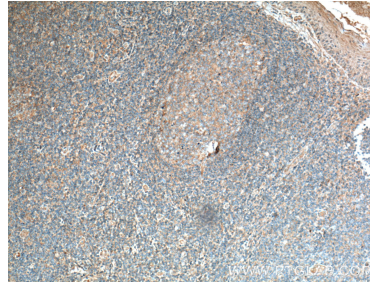
For technical support and original validation data for this product please contact:
T: 1 (888) 4PTGLAB (1-888-478-4522) (toll free in USA), or 1(312) 455-8498 (outside USA) E: proteintech@ptglab.com
W: ptglab.com

This product is exclusively available under Proteintech Group brand and is not available to purchase from any other manufacturer.

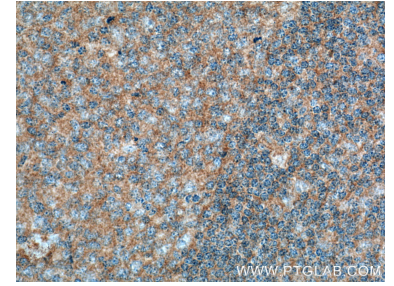
Selected Validation Data



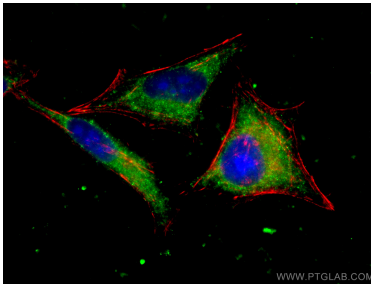
Various lysates were subjected to SDS PAGE followed by western blot with 66556-1-Ig (BCL10 antibody) at dilution of 1:3000 incubated at room temperature for 1.5 hours. The membrane was stripped and reblotted with HRP-conjugated Alpha Tubulin Monoclonal antibody (HRP-66031) as loading control. This data was developed using the same antibody clone with 66556-1-PBS in a different storage buffer formulation.



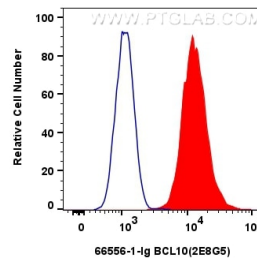
Immunohistochemical analysis of paraffin-embedded human tonsillitis tissue slide using 66556-1-Ig (BCL10 antibody) at dilution of 1:700 (under 10x lens. Heat mediated antigen retrieval with Tris-EDTA buffer (pH 9.0). This data was developed using the same antibody clone with 66556-1-PBS in a different storage buffer formulation.



Immunohistochemical analysis of paraffin-embedded human tonsillitis tissue slide using 66556-1-Ig (BCL10 antibody) at dilution of 1:700 (under 40x lens. Heat mediated antigen retrieval with Tris-EDTA buffer (pH 9.0). This data was developed using the same antibody clone with 66556-1-PBS in a different storage buffer formulation.



Immunofluorescent analysis of (-20°C Ethanol) fixed HepG2 cells using BCL10 antibody (66556-1-Ig, Clone: 2E8G5) at dilution of 1:400 and CoraLite®488-Conjugated AffiniPure Goat Anti-Mouse IgG(H+L), CL594-Phalloidin (red). This data was developed using the same antibody clone with 66556-1-PBS in a different storage buffer formulation.



1x10⁶ Jurkat cells were intracellularly stained with 0.4 ug BCL10 Monoclonal antibody (66556-1-Ig, Clone:2E8G5) and CoraLite®488-Conjugated AffiniPure Goat Anti-Mouse IgG(H+L) (SA00013-1)(red), or 0.4 ug Mouse IgG1 Isotype Control (MOPC-21) (65124-1-Ig, Clone: MOPC-21) (blue). Cells were fixed with 4% PFA and permeabilized with Flow Cytometry Perm Buffer (PF00011-C). This data was developed using the same antibody clone with 66556-1-PBS in a

