

For Research Use Only

Ki-67 Monoclonal antibody, PBS Only (Detector)

Catalog Number: 66555-6-PBS



Basic Information

Catalog Number: 66555-6-PBS	GenBank Accession Number: NM_002417	Purification Method: Protein G purification
Size: 100ug , Concentration: 1 mg/ml by Nanodrop;	GeneID (NCBI): 4288	CloneNo.: 1B9H2
Source: Mouse	UNIPROT ID: P46013	
Isotype: IgG1	Full Name: antigen identified by monoclonal antibody Ki-67	
Immunogen Catalog Number: AG26266	Calculated MW: 359 kDa	

Applications

Tested Applications:
IHC, IF/ICC, Cytometric bead array, Indirect ELISA

Species Specificity:
human

Product Information

66555-6-PBS targets Ki-67 as part of a matched antibody pair:

MP50237-3: 66555-5-PBS capture and 66555-6-PBS detection (validated in Cytometric bead array)

Unconjugated mouse monoclonal antibody pair in PBS only (BSA and azide free) storage buffer at a concentration of 1 mg/mL, ready for conjugation.

This conjugation ready format makes antibodies ideal for use in many applications including: ELISAs, multiplex assays requiring matched pairs, mass cytometry, and multiplex imaging applications. Antibody use should be optimized by the end user for each application and assay.

Background Information

The Ki-67 protein (also known as MKI67) is a cellular marker for proliferation. Ki67 is present during all active phases of the cell cycle (G1, S, G2 and M), but is absent in resting cells (G0). Cellular content of Ki-67 protein markedly increases during cell progression through S phase of the cell cycle. Therefore, the nuclear expression of Ki67 can be evaluated to assess tumor proliferation by immunohistochemistry. It has been demonstrated to be of prognostic value in breast cancer. In head and neck cancer, several studies have reported an association between high proliferative activity and poorer prognosis.

Storage

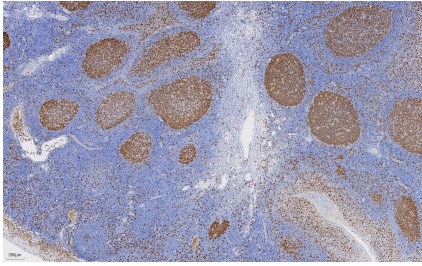
Storage:
Store at -80°C.

Storage Buffer:
PBS Only

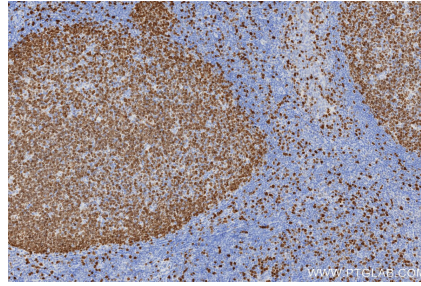
For technical support and original validation data for this product please contact:
T: 1 (888) 4PTGLAB (1-888-478-4522) (toll free in USA), or 1(312) 455-8498 (outside USA) E: proteintech@ptglab.com
W: ptglab.com

This product is exclusively available under Proteintech Group brand and is not available to purchase from any other manufacturer.

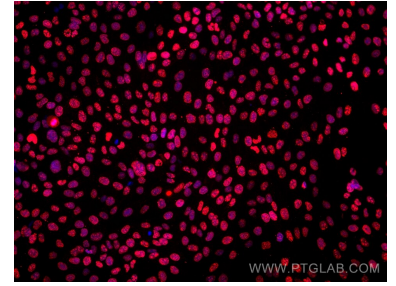
Selected Validation Data



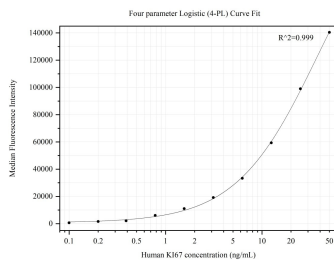
Immunohistochemical analysis of paraffin-embedded human tonsillitis tissue slide using 66555-6-Ig (Ki-67 antibody) at dilution of 1:5000 (under 4x lens). Heat mediated antigen retrieval with Tris-EDTA buffer (pH 9.0). This data was developed using the same antibody clone with 66555-6-PBS in a different storage buffer formulation.



Immunohistochemical analysis of paraffin-embedded human tonsillitis tissue slide using 66555-6-Ig (Ki-67 antibody) at dilution of 1:5000 (under 10x lens). Heat mediated antigen retrieval with Tris-EDTA buffer (pH 9.0). This data was developed using the same antibody clone with 66555-6-PBS in a different storage buffer formulation.



Immunofluorescent analysis of (4% PFA) fixed A431 cells using Ki-67 antibody (66555-6-Ig, Clone: 1B9H2) at dilution of 1:2000 and Multi-rAb CoraLite® Plus 594-Goat Anti-Mouse Recombinant Secondary Antibody (H+L) (Cat.NO. RGAM004). This data was developed using the same antibody clone with 66555-6-PBS in a different storage buffer formulation.



Cytometric bead array standard curve of MP50237-3, Ki67 Monoclonal Matched Antibody Pair, PBS Only. Capture antibody: 66555-5-PBS. Detection antibody: 66555-6-PBS. Standard: Ag26266. Range: 0.098-50 ng/mL