

For Research Use Only

Serpin F1/PEDF Monoclonal antibody

Catalog Number: 66554-1-Ig



Basic Information

Catalog Number: 66554-1-Ig	GenBank Accession Number: BC013984	Purification Method: Protein A purification
Size: 150ul , Concentration: 1000 ug/ml by Nanodrop and 1000 ug/ml by Bradford method using BSA as the standard;	GeneID (NCBI): 5176	CloneNo.: 2C5C8
Source: Mouse	UNIPROT ID: P36955	Recommended Dilutions: WB 1:2000-1:10000
Isotype: IgG1	Full Name: serpin peptidase inhibitor, clade F (alpha-2 antiplasmin, pigment epithelium derived factor), member 1	
Immunogen Catalog Number: AG26660	Calculated MW: 418 aa, 46 kDa	
	Observed MW: 46-50 kDa	

Applications

Tested Applications: WB, ELISA	Positive Controls: WB : human plasma tissue, pig plasma tissue, human blood tissue
Species Specificity: human, pig	

Background Information

PEDF also known as serpin F1 (SERPINF1), is a multifunctional secreted protein that has anti-angiogenic, anti-tumorigenic, and neurotrophic functions. It is an approximately 50-kDa secreted protein that is widely expressed, including by osteoblasts and osteoclasts. PEDF is also one of the most abundant secretory products of adipocytes, and circulating concentrations of PEDF correlate positively with body fat mass and INS resistance. PEDF is a neurotrophic factor involved in neuronal differentiation in retinoblastoma cells. Mutations in this gene were found in individuals with osteogenesis imperfecta, type VI.

Storage

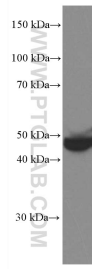
Storage:
Store at -20°C. Stable for one year after shipment.
Storage Buffer:
PBS with 0.02% sodium azide and 50% glycerol pH 7.3.
Aliquoting is unnecessary for -20°C storage

*** 20ul sizes contain 0.1% BSA

For technical support and original validation data for this product please contact:
T: 1 (888) 4PTGLAB (1-888-478-4522) (toll free in USA), or 1(312) 455-8498 (outside USA)
E: proteintech@ptglab.com
W: ptglab.com

This product is exclusively available under Proteintech Group brand and is not available to purchase from any other manufacturer.

Selected Validation Data



human plasma were subjected to SDS PAGE followed by western blot with 66554-1-Ig (PEDF antibody) at dilution of 1:5000 incubated at room temperature for 1.5 hours.