

For Research Use Only

STAT1 Monoclonal antibody

Catalog Number: 66545-1-Ig

Featured Product

38 Publications



Basic Information

Catalog Number: 66545-1-Ig	GenBank Accession Number: BC002704	Purification Method: Protein A purification
Size: 150ul, Concentration: 1900 ug/ml by Nanodrop and 1000 ug/ml by Bradford method using BSA as the standard;	GeneID (NCBI): 6772	CloneNo.: 1F7C6
Source: Mouse	UNIPROT ID: P42224	Recommended Dilutions: WB 1:5000-1:10000 IHC 1:200-1:800 IF/ICC 1:400-1:1600
Isotype: IgG2a	Full Name: signal transducer and activator of transcription 1, 91kDa	
Immunogen Catalog Number: AG0199	Calculated MW: 83 kDa	
	Observed MW: 84 kDa	

Applications

Tested Applications:
WB, IHC, IF/ICC, ELISA

Cited Applications:
WB, IHC, IF, IP, CoIP, RIP

Species Specificity:
human, mouse, rat

Cited Species:
human, mouse, rat, pig, rabbit

Note-IHC: suggested antigen retrieval with TE buffer pH 9.0; (*) Alternatively, antigen retrieval may be performed with citrate buffer pH 6.0

Positive Controls:

WB: LNCaP cells, HEK-293 cells, NIH/3T3 cells, HeLa cells, MCF-7 cells, Jurkat cells, HSC-T6 cells

IHC: human ovary tumor tissue, human tonsillitis tissue

IF/ICC: IFN alpha treated HeLa cells, HEK-293 cells

Background Information

STAT1 (signal transducers and activators of transcription 1) is a member of the STAT protein family. In response to cytokines and growth factors, STAT family members are phosphorylated by the receptor associated kinases, and then form homo- or heterodimers that translocate to the cell nucleus where they act as transcription activators. Various ligands, including interferons- and -, EGF, PDGF and IL-6, can activate STAT1. STAT1 protein mediates the expression of a variety of genes, which is thought to be important for cell viability in response to different cell stimuli and pathogens.

Notable Publications

Author	Pubmed ID	Journal	Application
Huimin Liu	36315588	PLoS Pathog	WB,IP
Shiguan Wang	30286793	Arthritis Res Ther	WB,CoIP
Teng Lil	34818332	PLoS Negl Trop Dis	WB

Storage

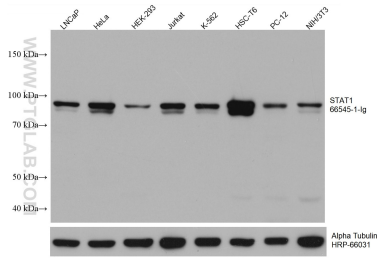
Storage:
Store at -20°C. Stable for one year after shipment.
Storage Buffer:
PBS with 0.02% sodium azide and 50% glycerol, pH7.3
Aliquoting is unnecessary for -20°C storage

*** 20ul sizes contain 0.1% BSA

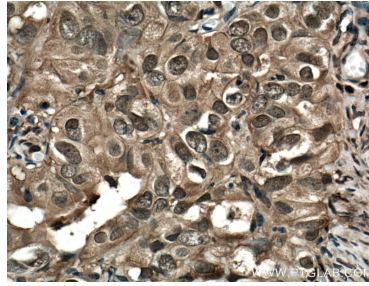
For technical support and original validation data for this product please contact:
T: 1 (888) 4PTGLAB (1-888-478-4522) (toll free in USA), or 1(312) 455-8498 (outside USA)
E: proteintech@ptglab.com
W: ptglab.com

This product is exclusively available under Proteintech Group brand and is not available to purchase from any other manufacturer.

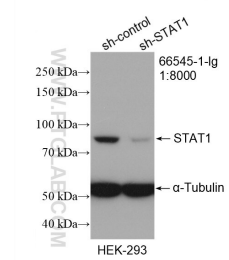
Selected Validation Data



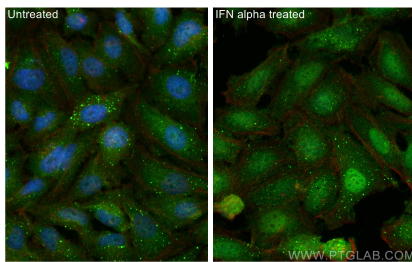
Various lysates were subjected to SDS PAGE followed by western blot with 66545-1-Ig (STAT1 antibody) at dilution of 1:10000 incubated at room temperature for 1.5 hours. The membrane was stripped and reblotted with HRP-conjugated Alpha Tubulin Monoclonal antibody (HRP-66031) as loading control.



Immunohistochemical analysis of paraffin-embedded human ovary tumor tissue slide using 66545-1-Ig (STAT1 antibody) at dilution of 1:400 (under 40x lens. Heat mediated antigen retrieval with Tris-EDTA buffer (pH 9.0).



WB result of STAT1 antibody (66545-1-Ig; 1:8000; incubated at room temperature for 1.5 hours) with sh-Control and sh-STAT1 transfected HEK-293 cells.



Immunofluorescent analysis of (4% PFA) fixed IFN alpha treated HeLa cells using STAT1 antibody (66545-1-Ig, Clone: 1F7C6) at dilution of 1:800 and CoraLite®488-Conjugated Goat Anti-Mouse IgG(H+L) (SA00013-1), CL594-Phalloidin (red).