

For Research Use Only

TWIST2 Monoclonal antibody, PBS Only



Catalog Number: 66544-1-PBS

Basic Information

Catalog Number: 66544-1-PBS	GenBank Accession Number: BC033168	Purification Method: Protein G purification
Size: 100ug , Concentration: 1 mg/ml by Nanodrop;	GeneID (NCBI): 117581	CloneNo.: 1B12D11
Source: Mouse	UNIPROT ID: Q8WVJ9	
Isotype: IgG1	Full Name: twist homolog 2 (Drosophila)	
Immunogen Catalog Number: AG2348	Calculated MW: 160 aa, 18 kDa	
	Observed MW: 22 kDa	

Applications

Tested Applications:
WB, IF, IHC, Indirect ELISA

Species Specificity:
Human, rat, mouse, pig

Background Information

TWIST2, also named as BHLHA39 and Dermo1, is a basic helix-loop-helix protein which acts as a transcriptional regulator, plays a central role in differentiation of mesodermal during embryogenesis. TWIST2 inhibits the premature or ectopic differentiation of preosteoblast cells during osteogenesis, possibly by changing the internal signal transduction response of osteoblasts to external growth factors. It is also implicated in tumorigenesis, invasion and metastasis. TWIST2 forms both homodimers (45KD) and heterodimers with E2A E proteins, and dimer partner selection is a critical mediator of TWIST function. (PMID:14724576, 16502419).

Storage

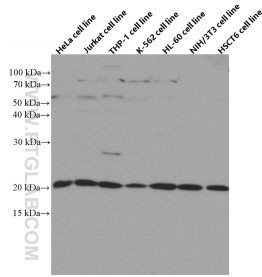
Storage:
Store at -80°C.

Storage Buffer:
PBS Only

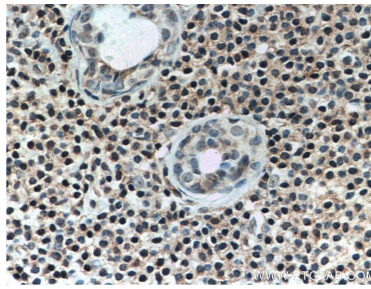
For technical support and original validation data for this product please contact:
T: 1 (888) 4PTGLAB (1-888-478-4522) (toll free in USA), or 1(312) 455-8498 (outside USA) E: proteintech@ptglab.com
W: ptglab.com

This product is exclusively available under Proteintech Group brand and is not available to purchase from any other manufacturer.

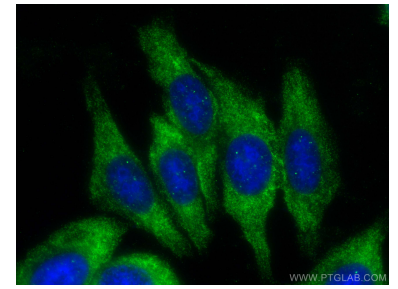
Selected Validation Data



Various cells were subjected to SDS PAGE followed by western blot with 66544-1-Ig (TWIST2 antibody) at dilution of 1:10000 incubated at room temperature for 1.5 hours. This data was developed using the same antibody clone with 66544-1-PBS in a different storage buffer formulation.



Immunohistochemical analysis of paraffin-embedded human breast cancer tissue slide using 66544-1-Ig (TWIST2 antibody) at dilution of 1:500 (under 40x lens). This data was developed using the same antibody clone with 66544-1-PBS in a different storage buffer formulation.



Immunofluorescent analysis of (-20°C Ethanol) fixed HepG2 cells using TWIST2 antibody (66544-1-Ig, Clone: 1B12D11) at dilution of 1:800 and CoraLite®488-Conjugated AffiniPure Goat Anti-Mouse IgG(H+L). This data was developed using the same antibody clone with 66544-1-PBS in a different storage buffer formulation.