

For Research Use Only

MDM2/HDM2 Monoclonal antibody, PBS Only

Catalog Number: 66511-1-PBS



Basic Information

Catalog Number: 66511-1-PBS	GenBank Accession Number: NM_002392	Purification Method: Protein A purification
Size: 100ug, Concentration: 1mg/ml by Nanodrop;	GeneID (NCBI): 4193	CloneNo.: 2A6C9
Source: Mouse	UNIPROT ID: Q00987	
Isotype: IgG2b	Full Name: Mdm2 p53 binding protein homolog (mouse)	
	Calculated MW: 55 kDa	
	Observed MW: 40-55 kDa	

Applications

Tested Applications:
WB, IHC, Indirect ELISA

Species Specificity:
human, mouse, rat, rabbit

Background Information

MDM2, also known as HDM2, is a protein of the E3 ubiquitin-ligase family. MDM2 is recognized as a proto-oncogene and is over-expressed in a wide range of human malignancies including soft tissue carcinomas and breast cancer. MDM2 can bind to the p53 tumor suppressor protein with high affinity, and negatively regulates p53 by mediating its ubiquitination and proteosomal degradation (PMID: 17000718). MDM2 has some isoforms with calculated molecular mass of 25-55kD, and can be detected as 90-97kD. In addition to full length MDM2, two lower bands (85kD and 75kD) are often observed which are likely to be produced by translation initiation at methionine codons 50 and 60. Another isoform of MDM2 is often observed as 57-60kD in cell lines which is indeed a caspase cleavage product of MDM2 at residue 361 (PMID: 19565011, 9840926, 7689721).

Storage

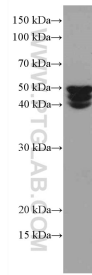
Storage:
Store at -80°C.

Storage Buffer:
PBS Only

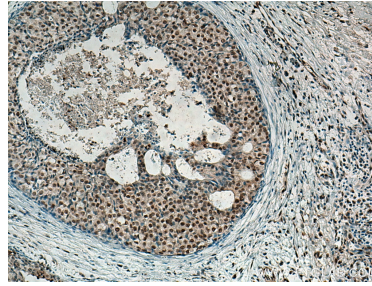
For technical support and original validation data for this product please contact:
T: 1 (888) 4PTGLAB (1-888-478-4522) (toll free in USA), or 1(312) 455-8498 (outside USA)
E: proteintech@ptglab.com
W: ptglab.com

This product is exclusively available under Proteintech Group brand and is not available to purchase from any other manufacturer.

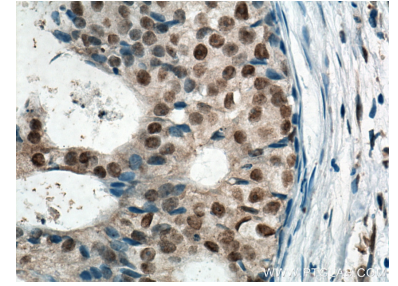
Selected Validation Data



MCF-7 cells were subjected to SDS PAGE followed by western blot with 66511-1-Ig (MDM2 antibody) at dilution of 1:3000 incubated at room temperature for 1.5 hours. This data was developed using the same antibody clone with 66511-1-PBS in a different storage buffer formulation.



Immunohistochemical analysis of paraffin-embedded human breast cancer tissue slide using 66511-1-Ig (MDM2 antibody) at dilution of 1:300 (under 10x lens). Heat mediated antigen retrieval with Tris-EDTA buffer (pH 9.0). This data was developed using the same antibody clone with 66511-1-PBS in a different storage buffer formulation.



Immunohistochemical analysis of paraffin-embedded human breast cancer tissue slide using 66511-1-Ig (MDM2 antibody) at dilution of 1:300 (under 40x lens). Heat mediated antigen retrieval with Tris-EDTA buffer (pH 9.0). This data was developed using the same antibody clone with 66511-1-PBS in a different storage buffer formulation.