

For Research Use Only

# MDH1 Monoclonal antibody, PBS Only

Catalog Number: 66505-1-PBS

Featured Product



## Basic Information

<b>Catalog Number:</b> 66505-1-PBS	<b>GenBank Accession Number:</b> BC001484	<b>Purification Method:</b> Protein G purification
<b>Size:</b> 100ug, Concentration: 1mg/ml by Nanodrop;	<b>GeneID (NCBI):</b> 4190	<b>CloneNo.:</b> 1F9A2
<b>Source:</b> Mouse	<b>UNIPROT ID:</b> P40925	
<b>Isotype:</b> IgG1	<b>Full Name:</b> malate dehydrogenase 1, NAD (soluble)	
<b>Immunogen Catalog Number:</b> AG8744	<b>Calculated MW:</b> 334 aa, 36 kDa	
	<b>Observed MW:</b> 36-37 kDa	

## Applications

**Tested Applications:**  
WB, IHC, IF/ICC, FC (Intra), Indirect ELISA

**Species Specificity:**  
human, mouse, rat

## Background Information

MDH1 (Malate dehydrogenase, cytoplasmic) is also named as MDHA and belongs to the LDH/MDH superfamily and MDH type 2 family which catalyzes the reversible oxidation of malate to oxaloacetate, utilizing the NAD/NADH cofactor system in the citric acid cycle. It can exist as a dimer and the dimeric MDH1 is the mitochondrial isoenzyme, whereas the tetrameric MDH2 is the glycosomal isoenzyme. (PMID:10693743)

## Storage

**Storage:**  
Store at -80°C.

**Storage Buffer:**  
PBS Only

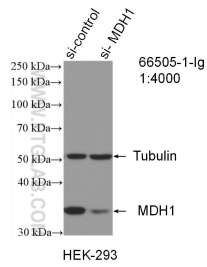
For technical support and original validation data for this product please contact:

T: 1 (888) 4PTGLAB (1-888-478-4522) (toll free in USA), or 1(312) 455-8498 (outside USA)

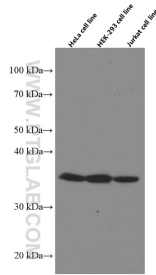
E: [proteintech@ptglab.com](mailto:proteintech@ptglab.com)  
W: [ptglab.com](http://ptglab.com)

This product is exclusively available under Proteintech Group brand and is not available to purchase from any other manufacturer.

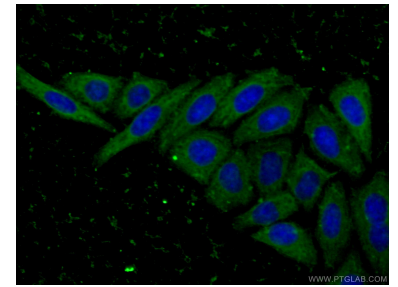
## Selected Validation Data



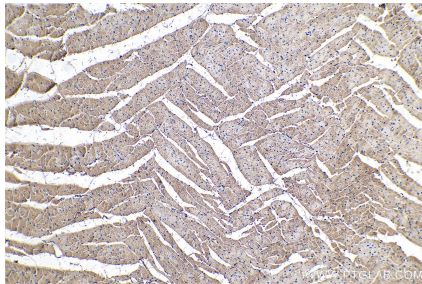
WB result of MDH1 antibody (66505-1-Ig; 1:4000; incubated at room temperature for 1.5 hours) with sh-Control and sh-MDH1 transfected HEK-293 cells. This data was developed using the same antibody clone with 66505-1-PBS in a different storage buffer formulation.



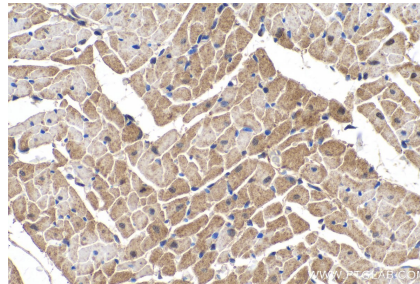
Various lysates were subjected to SDS PAGE followed by western blot with 66505-1-Ig (MDH1 antibody) at dilution of 1:5000 incubated at room temperature for 1.5 hours. This data was developed using the same antibody clone with 66505-1-PBS in a different storage buffer formulation.



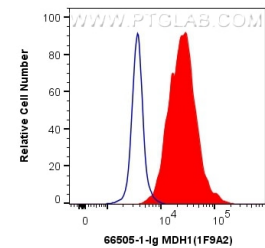
Immunofluorescent analysis of (-20°C Ethanol) fixed HepG2 cells using 66505-1-Ig (MDH1 antibody) at dilution of 1:100 and CoraLite488-Conjugated AffiniPure Goat Anti-Mouse IgG(H+L). This data was developed using the same antibody clone with 66505-1-PBS in a different storage buffer formulation.



Immunohistochemical analysis of paraffin-embedded rat heart tissue slide using 66505-1-Ig (MDH1 antibody) at dilution of 1:2000 (under 10x lens). Heat mediated antigen retrieval with Tris-EDTA buffer (pH 9.0). This data was developed using the same antibody clone with 66505-1-PBS in a different storage buffer formulation.



Immunohistochemical analysis of paraffin-embedded rat heart tissue slide using 66505-1-Ig (MDH1 antibody) at dilution of 1:2000 (under 40x lens). Heat mediated antigen retrieval with Tris-EDTA buffer (pH 9.0). This data was developed using the same antibody clone with 66505-1-PBS in a different storage buffer formulation.



1X10<sup>6</sup> HEK-293 cells were intracellularly stained with 0.4 ug Anti-Human MDH1 (66505-1-Ig, Clone:1F9A2) and CoraLite@488-Conjugated AffiniPure Goat Anti-Mouse IgG(H+L) at dilution 1:1000 (red), or 0.4 ug Mouse IgG1 Isotype Control (MOPC-21) (65124-1-Ig, Clone: MOPC-21) (blue). Cells were fixed with 4% PFA and permeabilized with Flow Cytometry Perm Buffer (PF00011-C). This data was developed using the same antibody clone with 66505-1-PBS in a