

For Research Use Only

PCCB Monoclonal antibody, PBS Only (Capture/Detector)

Catalog Number: 66501-1-PBS

Featured Product



Basic Information

Catalog Number:

66501-1-PBS

Size:

100ug, Concentration: 1mg/ml by
Nanodrop;

Source:

Mouse

Isotype:

IgG1

Immunogen Catalog Number:

AG1608

GenBank Accession Number:

BC013768

GeneID (NCBI):

5096

UNIPROT ID:

P05166

Full Name:

propionyl Coenzyme A carboxylase,
beta polypeptide

Calculated MW:

58 kDa

Observed MW:

58 kDa

Purification Method:

Protein G purification

CloneNo.:

1A9A5

Applications

Tested Applications:

WB, IHC, IF-P, Cytometric bead array, Indirect ELISA

Species Specificity:

human, mouse, rat, pig

Product Information

66501-1-PBS targets PCCB as part of a matched antibody pair:

MP50335-2: 66501-2-PBS capture and 66501-1-PBS detection (validated in Cytometric bead array)

MP50335-3: 66501-1-PBS capture and 66501-3-PBS detection (validated in Cytometric bead array)

Unconjugated mouse monoclonal antibody pair in PBS only (BSA and azide free) storage buffer at a concentration of 1 mg/mL, ready for conjugation.

This conjugation ready format makes antibodies ideal for use in many applications including: ELISAs, multiplex assays requiring matched pairs, mass cytometry, and multiplex imaging applications. Antibody use should be optimized by the end user for each application and assay.

Storage

Storage:

Store at -80°C.

Storage Buffer:

PBS Only

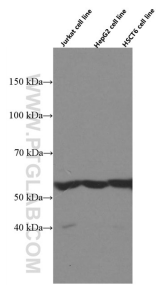
For technical support and original validation data for this product please contact:

T: 1 (888) 4PTGLAB (1-888-478-4522) (toll free
in USA), or 1(312) 455-8498 (outside USA)

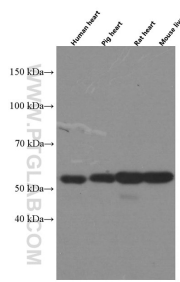
E: proteintech@ptglab.com
W: ptglab.com

This product is exclusively available under Proteintech Group brand and is not available to purchase from any other manufacturer.

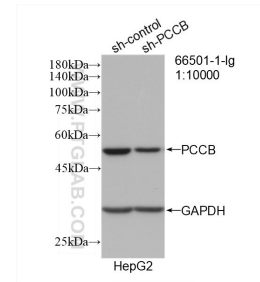
Selected Validation Data



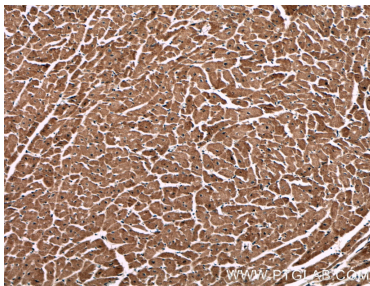
Various lysates were subjected to SDS PAGE followed by western blot with 66501-1-Ig (PCCB antibody) at dilution of 1:5000 incubated at room temperature for 1.5 hours. This data was developed using the same antibody clone with 66501-1-PBS in a different storage buffer formulation.



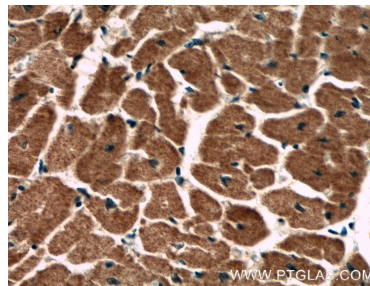
Various lysates were subjected to SDS PAGE followed by western blot with 66501-1-Ig (PCCB antibody) at dilution of 1:5000 incubated at room temperature for 1.5 hours. This data was developed using the same antibody clone with 66501-1-PBS in a different storage buffer formulation.



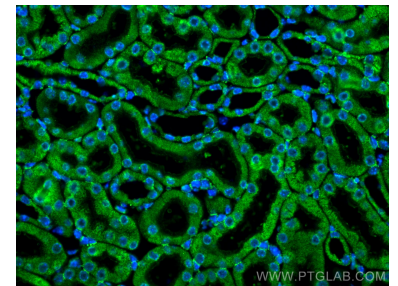
WB result of PCCB antibody (66501-1-Ig; 1:10000; incubated at room temperature for 1.5 hours) with sh-Control and sh-PCCB transfected HepG2 cells. This data was developed using the same antibody clone with 66501-1-PBS in a different storage buffer formulation.



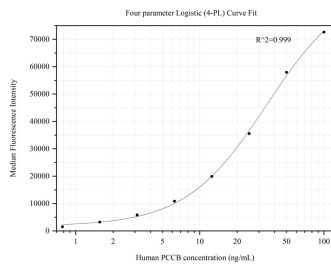
Immunohistochemical analysis of paraffin-embedded human heart tissue slide using 66501-1-Ig (PCCB antibody) at dilution of 1:300 (under 10x lens). This data was developed using the same antibody clone with 66501-1-PBS in a different storage buffer formulation.



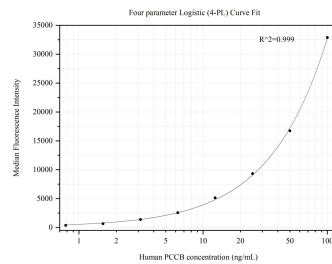
Immunohistochemical analysis of paraffin-embedded human heart tissue slide using 66501-1-Ig (PCCB antibody) at dilution of 1:300 (under 40x lens). This data was developed using the same antibody clone with 66501-1-PBS in a different storage buffer formulation.



Immunofluorescent analysis of (4% PFA) fixed paraffin-embedded mouse kidney tissue using PCCB antibody (66501-1-Ig, Clone: 1A9A5) at dilution of 1:400 and CoraLite@488-Conjugated Goat Anti-Mouse IgG(H+L) (SA00013-1). Heat mediated antigen retrieval with Tris-EDTA buffer (pH 9.0). This data was developed using the same antibody clone with 66501-1-PBS in a different storage buffer formulation.



Cytometric bead array standard curve of MP50335-2, PCCB Monoclonal Matched Antibody Pair, PBS Only. Capture antibody: 66501-2-PBS. Detection antibody: 66501-1-PBS. Standard: Ag1608. Range: 0.781-100 ng/mL



Cytometric bead array standard curve of MP50335-3, PCCB Monoclonal Matched Antibody Pair, PBS Only. Capture antibody: 66501-1-PBS. Detection antibody: 66501-3-PBS. Standard: Ag1608. Range: 0.781-100 ng/mL