

For Research Use Only

Calretinin Monoclonal antibody, PBS Only (Detector)

Catalog Number: 66496-1-PBS



Basic Information

Catalog Number: 66496-1-PBS	GenBank Accession Number: BC015484	Purification Method: Protein G purification
Size: 100ug, Concentration: 1mg/ml by Nanodrop;	GeneID (NCBI): 794	CloneNo.: 2D7A9
Source: Mouse	UNIPROT ID: P22676	
Isotype: IgG1	Full Name: calbindin 2	
Immunogen Catalog Number: AG2924	Calculated MW: 29 kDa	
	Observed MW: 29 kDa	

Applications

Tested Applications:
WB, IHC, IF/ICC, IF-P, Cytometric bead array, Indirect ELISA

Species Specificity:
human, mouse, rat, pig

Product Information

66496-1-PBS targets Calretinin as part of a matched antibody pair:

MP50295-3: 66496-6-PBS capture and 66496-1-PBS detection (validated in Cytometric bead array)

Unconjugated mouse monoclonal antibody pair in PBS only (BSA and azide free) storage buffer at a concentration of 1 mg/mL, ready for conjugation.

This conjugation ready format makes antibodies ideal for use in many applications including: ELISAs, multiplex assays requiring matched pairs, mass cytometry, and multiplex imaging applications. Antibody use should be optimized by the end user for each application and assay.

Background Information

Calbindin 2 (calretinin), is an intracellular calcium-binding protein belonging to the troponin C superfamily. Members of this protein family have six EF-hand domains which bind calcium. This protein plays a role in diverse cellular functions, including message targeting and intracellular calcium buffering. It also functions as a modulator of neuronal excitability, and is a diagnostic marker for some human diseases, including Hirschsprung disease and some cancers. Calretinin is a useful marker for differentiating malignant mesothelioma from carcinomas.

Storage

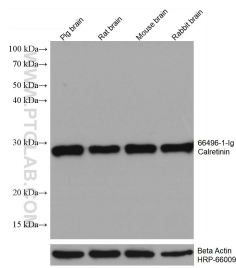
Storage:
Store at -80°C.

Storage Buffer:
PBS Only

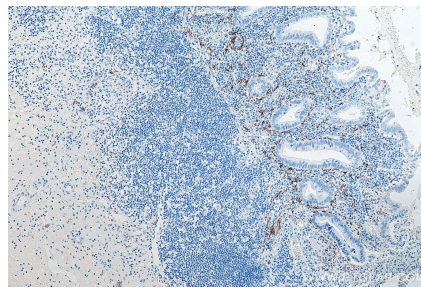
For technical support and original validation data for this product please contact:
T: 1 (888) 4PTGLAB (1-888-478-4522) (toll free in USA), or 1(312) 455-8498 (outside USA) E: proteintech@ptglab.com W: ptglab.com

This product is exclusively available under Proteintech Group brand and is not available to purchase from any other manufacturer.

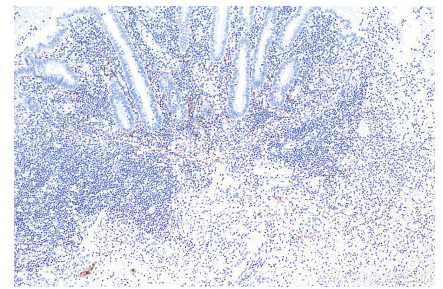
Selected Validation Data



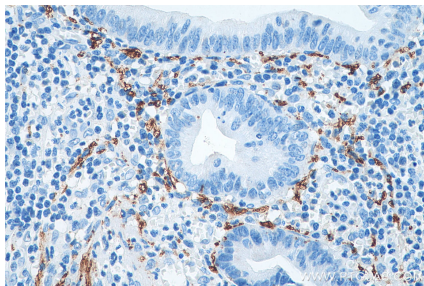
Various lysates were subjected to SDS PAGE followed by western blot with 66496-1-Ig (Calretinin antibody) at dilution of 1:20000 incubated at room temperature for 1.5 hours. The membrane was stripped and reblotted with HRP-conjugated Beta Actin Monoclonal antibody (HRP-66009) as loading control. This data was developed using the same antibody clone with 66496-1-PBS in a different storage buffer formulation.



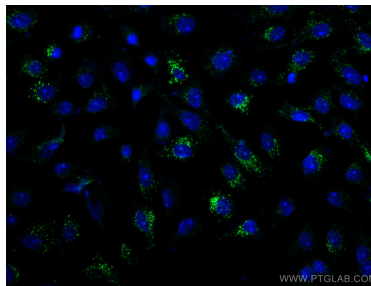
Immunohistochemical analysis of paraffin-embedded human appendicitis tissue slide using 66496-1-Ig (Calretinin antibody) at dilution of 1:5000 (under 10x lens). Heat mediated antigen retrieval with Tris-EDTA buffer (pH 9.0). This data was developed using the same antibody clone with 66496-1-PBS in a different storage buffer formulation.



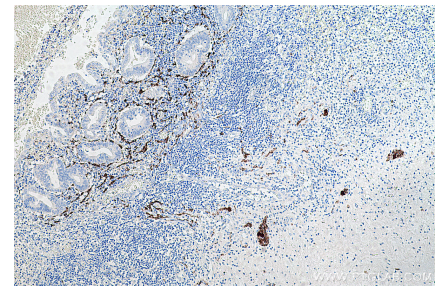
Immunohistochemical analysis of paraffin-embedded human appendicitis tissue slide using 66496-1-Ig (Calretinin antibody) at dilution of 1:4000 (under 10x lens). Heat mediated antigen retrieval with Tris-EDTA buffer (pH 9.0). This data was developed using the same antibody clone with 66496-1-PBS in a different storage buffer formulation.



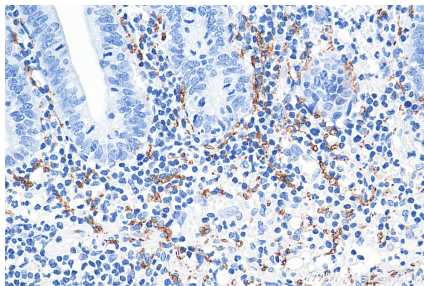
Immunohistochemical analysis of paraffin-embedded human appendicitis tissue slide using 66496-1-Ig (Calretinin antibody) at dilution of 1:5000 (under 40x lens). Heat mediated antigen retrieval with Tris-EDTA buffer (pH 9.0). This data was developed using the same antibody clone with 66496-1-PBS in a different storage buffer formulation.



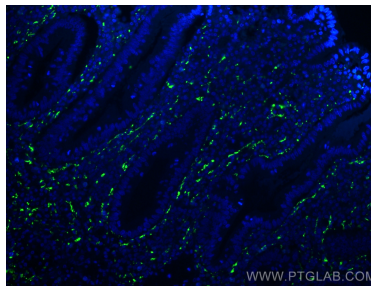
Immunofluorescent analysis of (-20°C Ethanol) fixed SH-SY5Y cells using Calretinin antibody (66496-1-Ig, Clone: 2D7A9) at dilution of 1:100 and CoraLite®488-Conjugated AffiniPure Goat Anti-Mouse IgG(H+L). This data was developed using the same antibody clone with 66496-1-PBS in a different storage buffer formulation.



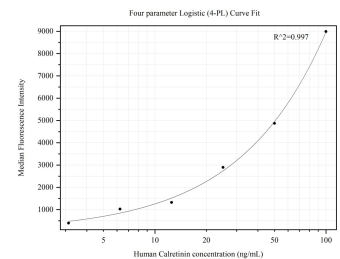
Immunohistochemical analysis of paraffin-embedded human appendicitis tissue slide using 66496-1-Ig (Calretinin antibody) at dilution of 1:16000 (under 10x lens). Heat mediated antigen retrieval with Tris-EDTA buffer (pH 9.0). This data was developed using the same antibody clone with 66496-1-PBS in a different storage buffer formulation.



Immunohistochemical analysis of paraffin-embedded human appendicitis tissue slide using 66496-1-Ig (Calretinin antibody) at dilution of 1:4000 (under 40x lens). Heat mediated antigen retrieval with Tris-EDTA buffer (pH 9.0). This data was developed using the same antibody clone with 66496-1-PBS in a different storage buffer formulation.



Immunofluorescent analysis of (4% PFA) fixed human appendicitis tissue using Calretinin antibody (66496-1-Ig, Clone: 2D7A9) at dilution of 1:400 and CoraLite®488-Conjugated AffiniPure Goat Anti-Mouse IgG(H+L). This data was developed using the same antibody clone with 66496-1-PBS in a different storage buffer formulation.



Cytometric bead array standard curve of MP50295-3, Calretinin Monoclonal Matched Antibody Pair, PBS Only. Capture antibody: 66496-6-PBS. Detection antibody: 66496-1-PBS. Standard: Ag2924. Range: 3.125-100 ng/mL