

For Research Use Only

# NRG1, isoform SMDF Monoclonal antibody, PBS Only



Catalog Number: 66492-1-PBS

## Basic Information

<b>Catalog Number:</b> 66492-1-PBS	<b>GenBank Accession Number:</b> BC007675	<b>Purification Method:</b> Protein A purification
<b>Size:</b> 100ug, Concentration: 1 mg/ml by Nanodrop;	<b>GeneID (NCBI):</b> 3084	<b>CloneNo.:</b> 2C6D12
<b>Source:</b> Mouse	<b>UNIPROT ID:</b> Q02297	
<b>Isotype:</b> IgG1	<b>Full Name:</b> neuregulin 1	
<b>Immunogen Catalog Number:</b> AG0803	<b>Calculated MW:</b> 70 kDa	
	<b>Observed MW:</b> 70 kDa	

## Applications

**Tested Applications:**  
WB, IF, Indirect ELISA

**Species Specificity:**  
Human, pig, mouse, rat, rabbit

## Background Information

Neuregulin 1 (NRG1) is a trophic factor that has been implicated in neural development, neurotransmission, and synaptic plasticity. NRG1 has multiple isoforms that are generated by usage of different promoters and alternative splicing of a single gene. NRG1 and its receptor ErbB tyrosine kinase are expressed not only in the developing nervous system, but also in the adult brain. The antibody is specific to NRG1 isoform SMDF.

## Storage

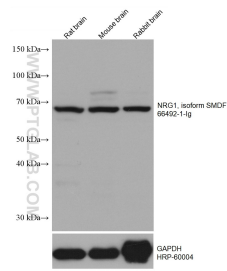
**Storage:**  
Store at -80°C.

**Storage Buffer:**  
PBS Only

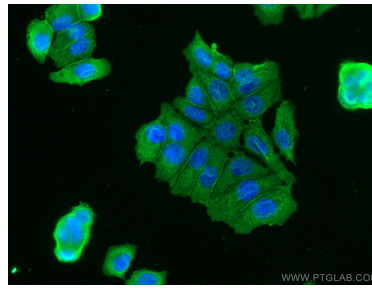
For technical support and original validation data for this product please contact:  
T: 1 (888) 4PTGLAB (1-888-478-4522) (toll free in USA), or 1(312) 455-8498 (outside USA)      E: [proteintech@ptglab.com](mailto:proteintech@ptglab.com)  
W: [ptglab.com](http://ptglab.com)

This product is exclusively available under Proteintech Group brand and is not available to purchase from any other manufacturer.

## Selected Validation Data



Various lysates were subjected to SDS PAGE followed by western blot with 66492-1-Ig (NRG1, isoform SMDF antibody) at dilution of 1:10000 incubated at room temperature for 1.5 hours. The membrane was stripped and reblotted with HRP-conjugated GAPDH Monoclonal antibody (HRP-60004) as loading control. This data was developed using the same antibody clone with 66492-1-PBS in a different storage buffer formulation.



Immunofluorescent analysis of (-20°C Methanol) fixed MCF-7 cells using NRG1, isoform SMDF antibody (66492-1-Ig, Clone: 2C6D12) at dilution of 1:400 and CoraLite@488-Conjugated AffiniPure Goat Anti-Mouse IgG(H+L). This data was developed using the same antibody clone with 66492-1-PBS in a different storage buffer formulation.