

For Research Use Only

# CLTC Monoclonal antibody

Catalog Number: 66487-1-Ig

Featured Product

9 Publications



## Basic Information

<b>Catalog Number:</b> 66487-1-Ig	<b>GenBank Accession Number:</b> BC054489	<b>Purification Method:</b> Protein A purification
<b>Size:</b> 150ul, Concentration: 1500 µg/ml by Nanodrop and 1000 µg/ml by Bradford method using BSA as the standard;	<b>GeneID (NCBI):</b> 1213	<b>CloneNo.:</b> 1B3D7
<b>Source:</b> Mouse	<b>UNIPROT ID:</b> Q00610	<b>Recommended Dilutions:</b> WB 1:20000-1:100000 IHC 1:1000-1:4000 IF/ICC 1:400-1:1600
<b>Isotype:</b> IgG1	<b>Full Name:</b> clathrin, heavy chain (Hc)	
<b>Immunogen Catalog Number:</b> AG25040	<b>Calculated MW:</b> 192 kDa	
	<b>Observed MW:</b> 170 kDa	

## Applications

**Tested Applications:**  
WB, IHC, IF/ICC, ELISA

**Cited Applications:**  
WB, IF, CoIP

**Species Specificity:**  
human, mouse, rat, pig, rabbit

**Cited Species:**  
human, mouse, rat, pig, monkey, chicken

**Note-IHC: suggested antigen retrieval with TE buffer pH 9.0; (\*) Alternatively, antigen retrieval may be performed with citrate buffer pH 6.0**

**Positive Controls:**

**WB:** LNCaP cells, HeLa cells, Raji cells, rat brain tissue, Jurkat cells, ROS1728 cells, pig brain tissue, HEK-293 cells, K-562 cells, rabbit brain tissue, mouse brain tissue

**IHC:** mouse kidney tissue, human breast cancer tissue

**IF/ICC:** HepG2 cells, HeLa cells

## Background Information

Clathrin is the major protein of the polyhedral coat of coated pits and vesicles which entrap specific macromolecules during receptor-mediated endocytosis. The clathrin molecule has a triskelion shape. Each clathrin triskelion is composed of three identical heavy chains (CLTC) (160-190 kDa) and three light chains of two types, LCA (CLTA) and LCB (CLTB) (30-40 kDa). The heavy chain provides the structural backbone of the clathrin lattice. (PMID: 9133677)

## Notable Publications

Author	Pubmed ID	Journal	Application
Nerea Ugidos	31620119	Front Immunol	WB
Ruihan Shi	33679671	Front Microbiol	WB
Yunhai Zhao	39558348	BMC Vet Res	IF

## Storage

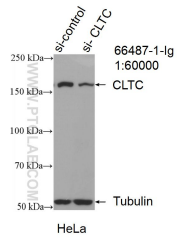
**Storage:**  
Store at -20°C. Stable for one year after shipment.  
**Storage Buffer:**  
PBS with 0.02% sodium azide and 50% glycerol pH 7.3.  
Aliquoting is unnecessary for -20°C storage

\*\*\* 20ul sizes contain 0.1% BSA

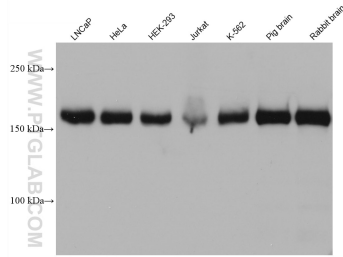
For technical support and original validation data for this product please contact:  
T: 1 (888) 4PTGLAB (1-888-478-4522) (toll free in USA), or 1(312) 455-8498 (outside USA)  
E: proteintech@ptglab.com  
W: ptglab.com

This product is exclusively available under Proteintech Group brand and is not available to purchase from any other manufacturer.

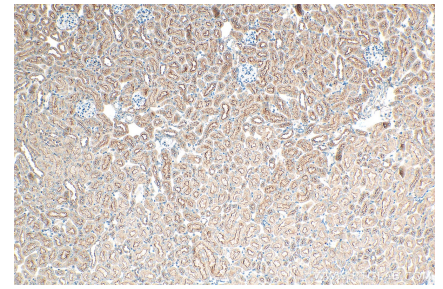
## Selected Validation Data



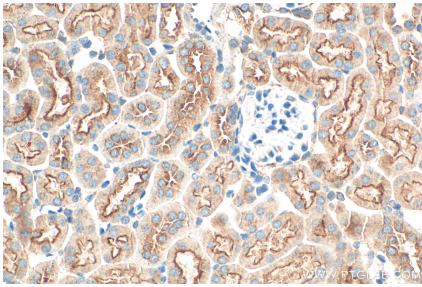
WB result of CLTC antibody (66487-1-Ig; 1:60000; incubated at room temperature for 1.5 hours) with sh-Control and sh-CLTC transfected HeLa cells.



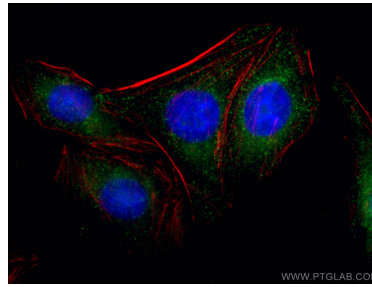
Various lysates were subjected to SDS PAGE followed by western blot with 66487-1-Ig (CLTC antibody) at dilution of 1:50000 incubated at room temperature for 1.5 hours.



Immunohistochemical analysis of paraffin-embedded mouse kidney tissue slide using 66487-1-Ig (CLTC antibody) at dilution of 1:2000 (under 10x lens). Heat mediated antigen retrieval with Tris-EDTA buffer (pH 9.0).



Immunohistochemical analysis of paraffin-embedded mouse kidney tissue slide using 66487-1-Ig (CLTC antibody) at dilution of 1:2000 (under 40x lens). Heat mediated antigen retrieval with Tris-EDTA buffer (pH 9.0).



Immunofluorescent analysis of (-20°C Ethanol) fixed HepG2 cells using CLTC antibody (66487-1-Ig; Clone: 1B3D7) at dilution of 1:800 and Coralite®488-Conjugated Goat Anti-Mouse IgG(H+L), CL594-Phalloidin (red).