

For Research Use Only

G3BP1 Monoclonal antibody, PBS Only



Catalog Number: 66486-1-PBS

Featured Product

Basic Information

Catalog Number:
66486-1-PBS

Size:
100ug, Concentration: 1 mg/ml by
Nanodrop;

Source:
Mouse

Isotype:
IgG1

Immunogen Catalog Number:
AG3728

GenBank Accession Number:
BC006997

GeneID (NCBI):
10146

UNIPROT ID:
Q13283

Full Name:
GTPase activating protein (SH3
domain) binding protein 1

Calculated MW:
466 aa, 52 kDa

Observed MW:
68 kDa

Purification Method:
Protein A purification

CloneNo.:
1E4A2

Applications

Tested Applications:
WB, IF, IHC, Indirect ELISA

Species Specificity:
Human, mouse, rat, pig

Background Information

GAP SH3 Binding Protein 1 (G3BP1), also named as G3BP, is an effector of stress granule (SG) assembly. SG biology plays an important role in the pathophysiology of TDP-43 in ALS and FTL-D-U. G3BP1 can be used as a marker of SG. It has been shown to function downstream of Ras and play a role in RNA metabolism, signal transduction, and proliferation. G3BP1 is a ubiquitously expressed protein that localizes to the cytoplasm in proliferating cells and to the nucleus in non-proliferating cells. G3BP1 has recently been implicated in cancer biology.

Storage

Storage:
Store at -80°C.
Storage Buffer:
PBS Only

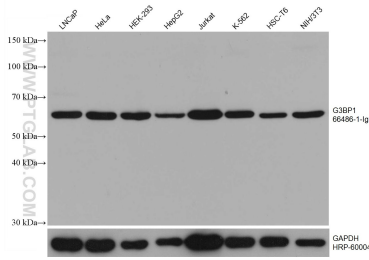
For technical support and original validation data for this product please contact:

T: 1 (888) 4PTGLAB (1-888-478-4522) (toll free
in USA), or 1(312) 455-8498 (outside USA)

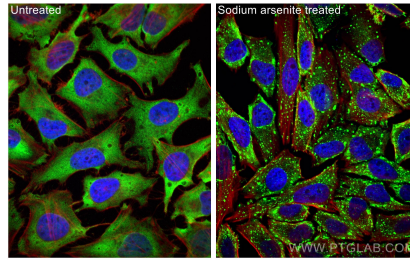
E: proteintech@ptglab.com
W: ptglab.com

This product is exclusively available under Proteintech Group brand and is not available to purchase from any other manufacturer.

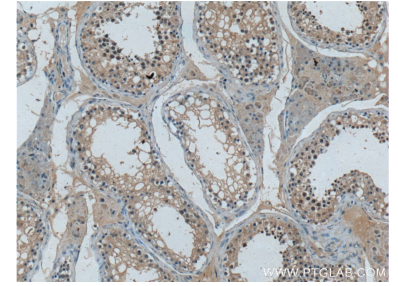
Selected Validation Data



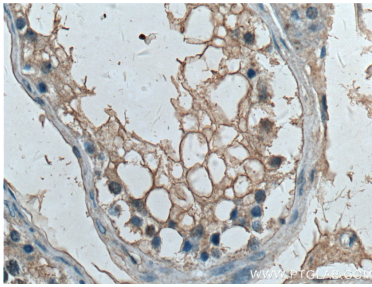
Various lysates were subjected to SDS PAGE followed by western blot with 66486-1-Ig (G3BP1 antibody) at dilution of 1:40000 incubated at room temperature for 1.5 hours. The membrane was stripped and reblotted with HRP-conjugated GAPDH Monoclonal antibody (HRP-60004) as loading control. This data was developed using the same antibody clone with 66486-1-PBS in a different storage buffer formulation.



Immunofluorescent analysis of (4% PFA) fixed sodium arsenite treated HeLa cells using G3BP1 antibody (66486-1-Ig, Clone: 1E4A2) at dilution of 1:1000 and CoraLite® 488-Conjugated AffiniPure Goat Anti-Mouse IgG(H+L), CL594-Phalloidin (red). This data was developed using the same antibody clone with 66486-1-PBS in a different storage buffer formulation.



Immunohistochemical analysis of paraffin-embedded human testis tissue slide using 66486-1-Ig (G3BP antibody) at dilution of 1:200 (under 10x lens). This data was developed using the same antibody clone with 66486-1-PBS in a different storage buffer formulation.



Immunohistochemical analysis of paraffin-embedded human testis tissue slide using 66486-1-Ig (G3BP antibody) at dilution of 1:200 (under 40x lens). This data was developed using the same antibody clone with 66486-1-PBS in a different storage buffer formulation.