

For Research Use Only

# Hemopexin Monoclonal antibody, PBS Only



Catalog Number: 66479-1-PBS

## Basic Information

<b>Catalog Number:</b> 66479-1-PBS	<b>GenBank Accession Number:</b> BC005395	<b>Purification Method:</b> Protein G purification
<b>Size:</b> 100ug , Concentration: 1mg/ml by Nanodrop;	<b>GeneID (NCBI):</b> 3263	<b>CloneNo.:</b> 3A9D6
<b>Source:</b> Mouse	<b>UNIPROT ID:</b> P02790	
<b>Isotype:</b> IgG1	<b>Full Name:</b> hemopexin	
<b>Immunogen Catalog Number:</b> AG8533	<b>Calculated MW:</b> 254 aa, 29 kDa	
	<b>Observed MW:</b> 65-75 kDa	

## Applications

**Tested Applications:**  
Indirect ELISA, IF-P, IHC, WB

**Species Specificity:**  
pig, rat, human

## Background Information

Hemopexin (HPX) is the plasma protein responsible for scavenging heme, thus preventing heme-mediated oxidative stress and heme-bound iron loss. In addition, hemopexin blocks heme activation of immune receptors and vascular inflammatory processes. It is mainly expressed in liver, the synthesis of which is induced after inflammation. Alterations of plasma hemopexin level have been linked to disorders like atherosclerosis and inflammatory diseases.

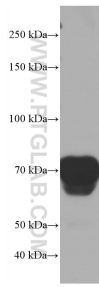
## Storage

**Storage:**  
Store at -80°C.  
**Storage Buffer:**  
PBS Only

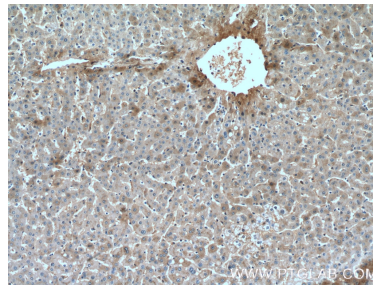
For technical support and original validation data for this product please contact:  
T: 1 (888) 4PTGLAB (1-888-478-4522) (toll free in USA), or 1(312) 455-8498 (outside USA)      E: [proteintech@ptglab.com](mailto:proteintech@ptglab.com)  
W: [ptglab.com](http://ptglab.com)

This product is exclusively available under Proteintech Group brand and is not available to purchase from any other manufacturer.

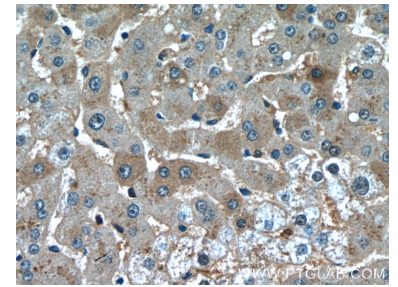
## Selected Validation Data



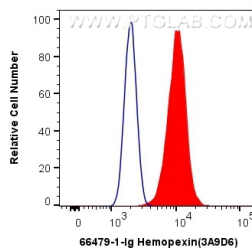
0.7  $\mu$ L human plasma was subjected to SDS PAGE followed by western blot with 66479-1-Ig (Hemopexin antibody) at dilution of 1:20000 incubated at room temperature for 1.5 hours. This data was developed using the same antibody clone with 66479-1-PBS in a different storage buffer formulation.



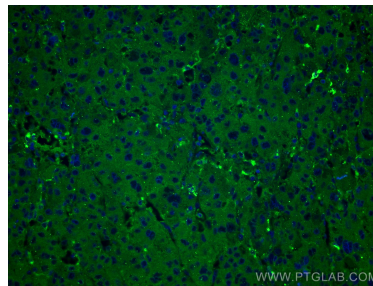
Immunohistochemical analysis of paraffin-embedded human liver tissue slide using 66479-1-Ig (Hemopexin antibody) at dilution of 1:500 (under 10x lens). This data was developed using the same antibody clone with 66479-1-PBS in a different storage buffer formulation.



Immunohistochemical analysis of paraffin-embedded human liver tissue slide using 66479-1-Ig (Hemopexin antibody) at dilution of 1:500 (under 40x lens). This data was developed using the same antibody clone with 66479-1-PBS in a different storage buffer formulation.



1X10<sup>6</sup> HepG2 cells were intracellularly stained with 0.5  $\mu$ g Anti-Human Hemopexin (66479-1-Ig, Clone:3A9D6) and CoraLite<sup>®</sup>488-Conjugated AffiniPure Goat Anti-Mouse IgG(H+L) at dilution 1:1000 (red), or 0.5  $\mu$ g Control Antibody. Cells were fixed with 4% PFA and permeabilized with Flow Cytometry Perm Buffer (PF00011-C). This data was developed using the same antibody clone with 66479-1-PBS in a different storage buffer formulation.



Immunofluorescent analysis of (4% PFA) fixed human liver cancer tissue using Hemopexin antibody (66479-1-Ig, Clone: 3A9D6) at dilution of 1:400 and CoraLite<sup>®</sup>488-Conjugated AffiniPure Goat Anti-Mouse IgG(H+L). This data was developed using the same antibody clone with 66479-1-PBS in a different storage buffer formulation.