

For Research Use Only

# EZH2 Monoclonal antibody, PBS Only

Catalog Number: 66476-1-PBS

Featured Product



## Basic Information

**Catalog Number:**

66476-1-PBS

**Size:**

100ug, Concentration: 1 mg/ml by Nanodrop;

**Source:**

Mouse

**Isotype:**

IgG1

**Immunogen Catalog Number:**

AG16789

**GenBank Accession Number:**

BC010858

**GeneID (NCBI):**

2146

**UNIPROT ID:**

Q15910

**Full Name:**

enhancer of zeste homolog 2 (Drosophila)

**Calculated MW:**

751 aa, 86 kDa

**Observed MW:**

90-102 kDa

**Purification Method:**

Protein A purification

**CloneNo.:**

1F10A12

## Applications

**Tested Applications:**

WB, FC (Intra), Indirect ELISA

**Species Specificity:**

human, mouse, rat

## Background Information

EZH2 (enhancer of zeste homologue 2, also known as KMT6) is a member of Polycomb group (PcG) family and encodes a histone methyl transferase that has an essential role in promoting histone H3 lysine 27 trimethylation (H3K27me3) and epigenetic gene silencing. EZH2 is important for cell proliferation and inhibition of cell differentiation, and is implicated in cancer progression. Overexpression of EZH2 is a marker of advanced and metastatic disease in many solid tumors, including prostate and breast cancer. This antibody detected EZH2 protein as a single band with a molecular weight (MW) of 91-100 kDa in multiple cell lines. The phosphorylation may result in the higher molecular weight (calculated MW as 80-86 kDa). (20935635, 21367748)

## Storage

**Storage:**

Store at -80°C.

**Storage Buffer:**

PBS Only

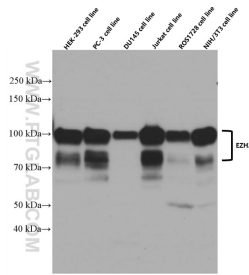
For technical support and original validation data for this product please contact:

T: 1 (888) 4PTGLAB (1-888-478-4522) (toll free in USA), or 1(312) 455-8498 (outside USA)

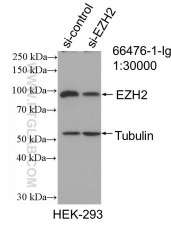
E: [proteintech@ptglab.com](mailto:proteintech@ptglab.com)  
W: [ptglab.com](http://ptglab.com)

This product is exclusively available under Proteintech Group brand and is not available to purchase from any other manufacturer.

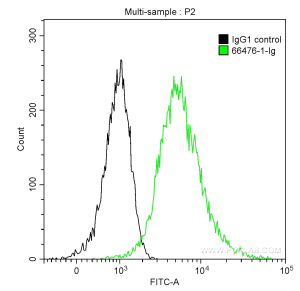
## Selected Validation Data



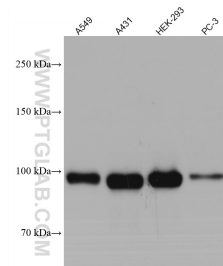
Various cell lines were subjected to SDS PAGE followed by western blot with 66476-1-Ig (EZH2 antibody) at dilution of 1:10000 incubated at room temperature for 1.5 hours. This data was developed using the same antibody clone with 66476-1-PBS in a different storage buffer formulation.



WB result of EZH2 antibody (66476-1-Ig; 1:30000; incubated at room temperature for 1.5 hours) with sh-Control and sh-EZH2 transfected HEK-293 cells. This data was developed using the same antibody clone with 66476-1-PBS in a different storage buffer formulation.



$1 \times 10^6$  HepG2 cells were intracellularly stained with 0.2 ug Anti-Human EZH2 (66476-1-Ig, Clone:1F10A12) and CoraLite®488-Conjugated AffiniPure Goat Anti-Mouse IgG(H+L) at dilution 1:1000 (green), and 0.2 ug Mouse IgG1 Isotype Control (66360-1-Ig, Clone: T1F8D3F10) (black). Cells were fixed with 4% PFA and permeabilized with 0.1% TritonX-100. This data was developed using the same antibody clone with 66476-1-PBS in a different storage buffer formulation.



Various lysates were subjected to SDS PAGE followed by western blot with 66476-1-Ig (EZH2 antibody) at dilution of 1:10000 incubated at room temperature for 1.5 hours. This data was developed using the same antibody clone with 66476-1-PBS in a different storage buffer formulation.