

For Research Use Only

# PSAP Monoclonal antibody

Catalog Number: 66473-1-Ig **Featured Product**



## Basic Information

<b>Catalog Number:</b> 66473-1-Ig	<b>GenBank Accession Number:</b> BC001503	<b>Purification Method:</b> Protein G purification
<b>Size:</b> 150ul , Concentration: 1300 µg/ml by Nanodrop and 987 µg/ml by Bradford method using BSA as the standard;	<b>GeneID (NCBI):</b> 5660	<b>CloneNo.:</b> 2F11B2
<b>Source:</b> Mouse	<b>UNIPROT ID:</b> P07602	<b>Recommended Dilutions:</b> WB 1:2500-1:10000 IHC 1:150-1:600 IF-P 1:200-1:800 IF/ICC 1:200-1:800
<b>Isotype:</b> IgG1	<b>Full Name:</b> prosaposin	
<b>Immunogen Catalog Number:</b> AG1194	<b>Calculated MW:</b> 58 kDa	
	<b>Observed MW:</b> 70 kDa	

## Applications

**Tested Applications:**  
WB, IHC, IF/ICC, IF-P, ELISA

**Species Specificity:**  
human

**Note-IHC: suggested antigen retrieval with TE buffer pH 9.0; (\*) Alternatively, antigen retrieval may be performed with citrate buffer pH 6.0**

### Positive Controls:

**WB :** human milk tissue, human milk, HepG2 cells, PC-3 cells, HeLa cells

**IHC :** human prostate cancer tissue,

**IF-P :** human prostate cancer tissue,

**IF/ICC :** HeLa cells,

## Storage

**Storage:**  
Store at -20°C. Stable for one year after shipment.

**Storage Buffer:**  
PBS with 0.02% sodium azide and 50% glycerol pH 7.3.

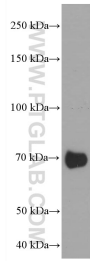
Aliquoting is unnecessary for -20°C storage

\*\*\* 20ul sizes contain 0.1% BSA

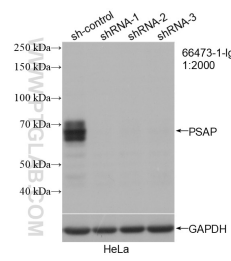
For technical support and original validation data for this product please contact:  
T: 1 (888) 4PTGLAB (1-888-478-4522) (toll free in USA), or 1(312) 455-8498 (outside USA)      E: proteintech@ptglab.com  
W: ptglab.com

This product is exclusively available under Proteintech Group brand and is not available to purchase from any other manufacturer.

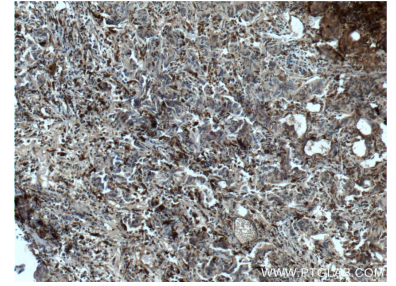
## Selected Validation Data



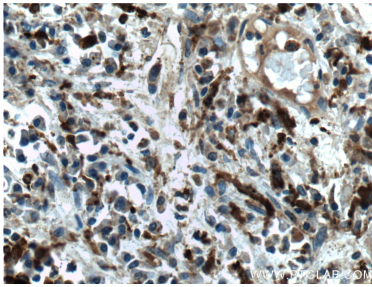
human milk were subjected to SDS PAGE followed by western blot with 66473-1-Ig (PSAP antibody) at dilution of 1:5000 incubated at room temperature for 1.5 hours.



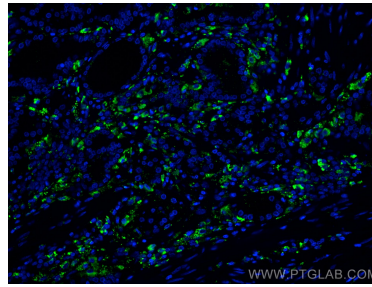
WB result of PSAP antibody (66473-1-Ig; 1:2000; incubated at room temperature for 1.5 hours) with sh-Control and sh-PSAP transfected HeLa cells.



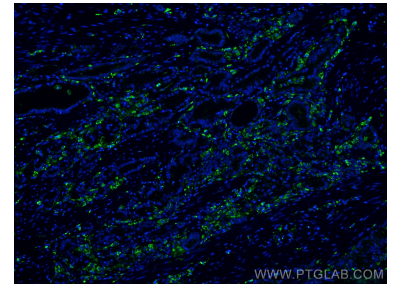
Immunohistochemical analysis of paraffin-embedded human prostate cancer tissue slide using 66473-1-Ig (PSAP antibody) at dilution of 1:300 (under 10x lens. Heat mediated antigen retrieval with Tris-EDTA buffer (pH 9.0).



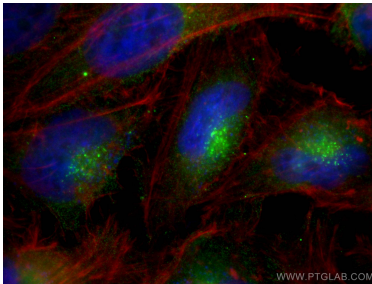
Immunohistochemical analysis of paraffin-embedded human prostate cancer tissue slide using 66473-1-Ig (PSAP antibody) at dilution of 1:300 (under 40x lens. Heat mediated antigen retrieval with Tris-EDTA buffer (pH 9.0).



Immunofluorescent analysis of (4% PFA) fixed human prostate cancer tissue using PSAP antibody (66473-1-Ig, Clone: 2F11B2) at dilution of 1:400 and CoraLite®488-Conjugated AffiniPure Goat Anti-Mouse IgG(H+L).



Immunofluorescent analysis of (4% PFA) fixed human prostate cancer tissue using PSAP antibody (66473-1-Ig, Clone: 2F11B2) at dilution of 1:400 and CoraLite®488-Conjugated AffiniPure Goat Anti-Mouse IgG(H+L).



Immunofluorescent analysis of (4% PFA) fixed HeLa cells using PSAP antibody (66473-1-Ig, Clone: 2F11B2) at dilution of 1:400 and Multi-rAb CoraLite® Plus 488-Goat Anti-Mouse Recombinant Secondary Antibody (H+L) (RGAM002), CL594-phalloidin (red).