

EGFR Monoclonal antibody

Catalog Number: 66455-1-Ig

Featured Product

53 Publications

Basic Information

| | | |
|--|--|---|
| Catalog Number: 66455-1-Ig | GenBank Accession Number: BC094761 | Purification Method: Protein G purification |
| Size: 150ul , Concentration: 1000 µg/ml by Nanodrop; | GeneID (NCBI): 1956 | CloneNo.: 2A2H10 |
| Source: Mouse | Full Name: epidermal growth factor receptor (erythroblastic leukemia viral (v-erb- b) oncogene homolog, avian) | Recommended Dilutions: WB 1:5000-1:50000 IHC 1:1000-1:4000 |
| Isotype: IgG1 | Calculated MW: 1210 aa, 134 kDa | |
| Immunogen Catalog Number: AG24947 | Observed MW: 145-165 kDa | |

Applications

Tested Applications:
FC, IHC, WB, ELISA

Cited Applications:
IF, IHC, WB

Species Specificity:
human

Cited Species:
human

Note-IHC: suggested antigen retrieval with TE buffer pH 9.0; (*) Alternatively, antigen retrieval may be performed with citrate buffer pH 6.0

Positive Controls:

WB : A431 cells, EC109 cells, A549 cells, HeLa cells, HepG2 cells, LNCaP cells, PC-3 cells, SKOV-3 cells, MDA-MB-468 cells, MDA-MB-231 cells, PC-3 cells

IHC : human tonsillitis tissue, human breast cancer tissue, human cervical cancer tissue, human colon cancer tissue, human gliomas tissue, human lung cancer tissue, human skin cancer tissue

Background Information

EGFR, also named as ERBB1, is a cell-surface receptor for members of the epidermal growth factor family (EGF-family) of extracellular protein ligands. Binding of the protein to a ligand induces receptor dimerization and tyrosine autophosphorylation and leads to cell proliferation. The gene resides on chromosome 7p12, encoding a 170 kDa membrane-associated glycoprotein. Recent studies have shown EGFR plays a critical role in cancer development and progression, including cell proliferation, apoptosis, angiogenesis, and metastatic spread. Mutations in this gene are associated with lung cancer.

Notable Publications

| Author | Pubmed ID | Journal | Application |
|------------|-----------|---------------|-------------|
| Dali Zhao | 34555268 | FEBS Open Bio | WB |
| Huilan Li | 33076176 | Talanta | WB, IF |
| Jiarui Cui | 36187764 | Front Physiol | IHC |

Storage

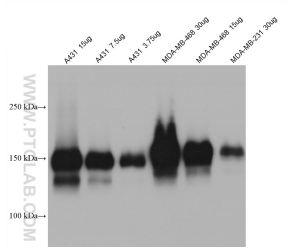
Storage:
Store at -20°C. Stable for one year after shipment.
Storage Buffer:
PBS with 0.02% sodium azide and 50% glycerol pH 7.3.
 Aliquoting is unnecessary for -20°C storage

*** 20ul sizes contain 0.1% BSA

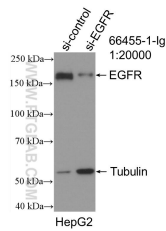
For technical support and original validation data for this product please contact:
 T: 1 (888) 4PTGLAB (1-888-478-4522) (toll free in USA), or 1(312) 455-8498 (outside USA)
 E: proteintech@ptglab.com
 W: ptglab.com

This product is exclusively available under Proteintech Group brand and is not available to purchase from any other manufacturer.

Selected Validation Data



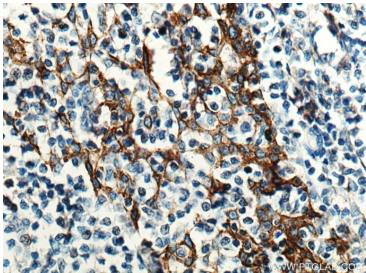
Various lysates were subjected to SDS PAGE followed by western blot with 66455-1-Ig (EGFR antibody) at dilution of 1:20000 incubated at room temperature for 1.5 hours.



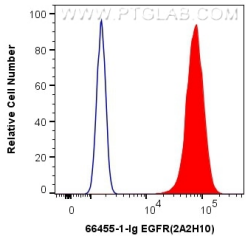
WB result of EGFR antibody (66455-1-Ig; 1:20000; incubated at room temperature for 1.5 hours) with sh-Control and sh-EGFR transfected HepG2 cells.



Immunohistochemical analysis of paraffin-embedded human tonsillitis tissue slide using 66455-1-Ig (EGFR antibody) at dilution of 1:2000 (under 10x lens). Heat mediated antigen retrieval with Tris-EDTA buffer (pH 9.0).



Immunohistochemical analysis of paraffin-embedded human tonsillitis tissue slide using 66455-1-Ig (EGFR antibody) at dilution of 1:2000 (under 40x lens). Heat mediated antigen retrieval with Tris-EDTA buffer (pH 9.0).



1X10⁶ A431 cells were intracellularly stained with 0.4 ug Anti-Human EGFR (66455-1-Ig, Clone:2A2H10) and Coralite®488-Conjugated AffiniPure Goat Anti-Mouse IgG(H+L) at dilution 1:1000 (red), or 0.4 ug Mouse IgG1 Isotype Control (MOPC-21) (65124-1-Ig, Clone: MOPC-21) (blue). Cells were fixed with 4% PFA and permeabilized with Flow Cytometry Perm Buffer (PF00011-C).