

For Research Use Only

Gamma Catenin Monoclonal antibody, PBS Only



Catalog Number: 66445-1-PBS

Basic Information

Catalog Number: 66445-1-PBS	GenBank Accession Number: BC011865	Purification Method: Protein A purification
Size: 100ug, Concentration: 1 mg/ml by Nanodrop;	GeneID (NCBI): 3728	CloneNo.: 1A5D10
Source: Mouse	UNIPROT ID: P14923	
Isotype: IgG1	Full Name: junction plakoglobin	
Immunogen Catalog Number: AG1627	Calculated MW: 82 kDa	
	Observed MW: 82 kDa	

Applications

Tested Applications:
WB, IF, IHC, Indirect ELISA

Species Specificity:
human, rat, pig, Canine, mouse

Background Information

Plakoglobin (γ -catenin), a member of the Armadillo proteins, plays important roles in cell adhesion with α -catenin and β -catenin, is involved in Wnt signaling, and is translocated into the nucleus and binds LEF1. Plakoglobin is a major cytoplasmic component of both desmosomes and adherens junctions, and is the only known constituent common to submembranous plaques in both of these structures, which are located at the intercalated disc (ICD) of cardiomyocytes. Plakoglobin links cadherins to the actin cytoskeleton. Mutations in plakoglobin are associated with arrhythmogenic right ventricular dysplasia and Pemphigus vulgaris.

Storage

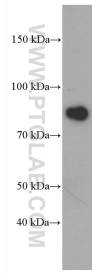
Storage:
Store at -80°C .

Storage Buffer:
PBS Only

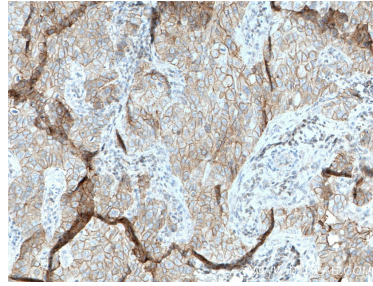
For technical support and original validation data for this product please contact:
T: 1 (888) 4PTGLAB (1-888-478-4522) (toll free in USA), or 1(312) 455-8498 (outside USA) E: proteintech@ptglab.com
W: ptglab.com

This product is exclusively available under Proteintech Group brand and is not available to purchase from any other manufacturer.

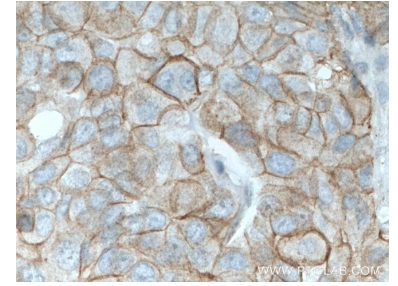
Selected Validation Data



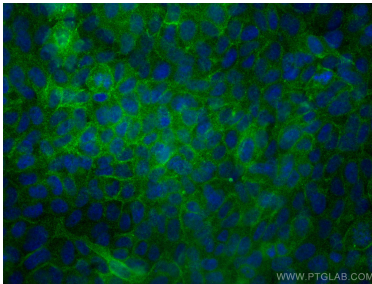
human heart tissue were subjected to SDS PAGE followed by western blot with 66445-1-Ig (Plakoglobin/gamma catenin antibody at dilution of 1:2000 incubated at room temperature for 1.5 hours. This data was developed using the same antibody clone with 66445-1-PBS in a different storage buffer formulation.



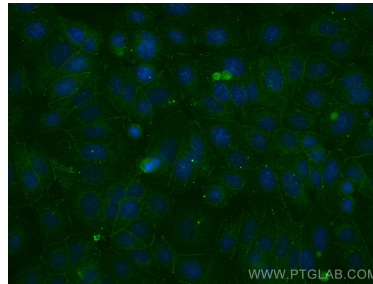
Immunohistochemical analysis of paraffin-embedded human breast cancer tissue slide using 66445-1-Ig (gamma catenin antibody) at dilution of 1:2000 (under 10x lens. Heat mediated antigen retrieval with Tris-EDTA buffer (pH 9.0). This data was developed using the same antibody clone with 66445-1-PBS in a different storage buffer formulation.



Immunohistochemical analysis of paraffin-embedded human breast cancer tissue slide using 66445-1-Ig (gamma catenin antibody) at dilution of 1:2000 (under 40x lens. Heat mediated antigen retrieval with Tris-EDTA buffer (pH 9.0). This data was developed using the same antibody clone with 66445-1-PBS in a different storage buffer formulation.



Immunofluorescent analysis of (4% PFA) fixed A431 cells using Gamma Catenin antibody (66445-1-Ig, Clone: 1A5D10) at dilution of 1:400 and CoraLite®488-Conjugated AffiniPure Goat Anti-Mouse IgG(H+L). This data was developed using the same antibody clone with 66445-1-PBS in a different storage buffer formulation.



Immunofluorescent analysis of (-20°C Methanol) fixed MCF-7 cells using Gamma Catenin antibody (66445-1-Ig, Clone: 1A5D10) at dilution of 1:400 and CoraLite®488-Conjugated AffiniPure Goat Anti-Mouse IgG(H+L). This data was developed using the same antibody clone with 66445-1-PBS in a different storage buffer formulation.