

For Research Use Only

# LDHB Monoclonal antibody

Catalog Number: 66425-1-Ig **7 Publications**



## Basic Information

<b>Catalog Number:</b> 66425-1-Ig	<b>GenBank Accession Number:</b> BC002362	<b>Purification Method:</b> Protein A purification
<b>Size:</b> 150ul , Concentration: 1400 ug/ml by Nanodrop and 1000 ug/ml by Bradford method using BSA as the standard;	<b>GeneID (NCBI):</b> 3945	<b>CloneNo.:</b> 5E9G1
<b>Source:</b> Mouse	<b>UNIPROT ID:</b> P07195	<b>Recommended Dilutions:</b> WB 1:20000-1:100000 IHC 1:16000-1:64000 IF/ICC 1:50-1:500
<b>Isotype:</b> IgG1	<b>Full Name:</b> lactate dehydrogenase B	
<b>Immunogen Catalog Number:</b> AG6605	<b>Calculated MW:</b> 36 kDa	
	<b>Observed MW:</b> 35 kDa	

## Applications

**Tested Applications:**  
WB, IHC, IF/ICC, ELISA

**Cited Applications:**  
WB, IF, CoIP

**Species Specificity:**  
human, rat, mouse, pig

**Cited Species:**  
human, mouse, rat

**Note-IHC: suggested antigen retrieval with TE buffer pH 9.0; (\*) Alternatively, antigen retrieval may be performed with citrate buffer pH 6.0**

**Positive Controls:**

**WB :** HEK-293 cells, PC-12 cells, Neuro-2a cells, pig brain tissue, rat brain tissue, mouse brain tissue, rabbit brain tissue, mouse cerebellum tissue, rat cerebellum tissue

**IHC :** mouse heart tissue,

**IF/ICC :** HeLa cells,

## Background Information

LDHB, also named as LDH-H and NY-REN-46, belongs to the LDH/MDH superfamily. And LDH family. It is an enzyme which catalyzes the reversible conversion of lactate and pyruvate, and NAD and NADH, in the glycolytic pathway. It is glycolytic enzymes and it is positively regulated by mTOR.

## Notable Publications

Author	Pubmed ID	Journal	Application
Wen-Qi Ma	33203874	Cell Death Dis	WB,IF
Yang Zhou	35530138	Acta Pharm Sin B	WB
Shiyi He	36013411	Life (Basel)	WB

## Storage

**Storage:**

Store at -20°C. Stable for one year after shipment.

**Storage Buffer:**

PBS with 0.02% sodium azide and 50% glycerol pH 7.3.

Aliquoting is unnecessary for -20°C storage

**\*\*\* 20ul sizes contain 0.1% BSA**

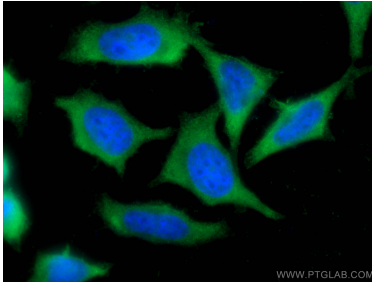
For technical support and original validation data for this product please contact:

T: 1 (888) 4PTGLAB (1-888-478-4522) (toll free in USA), or 1(312) 455-8498 (outside USA)

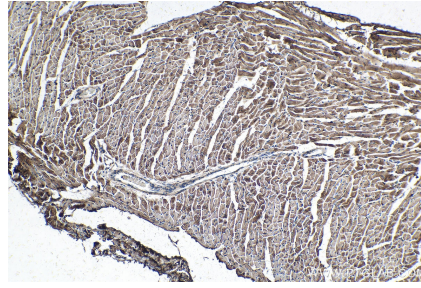
E: proteintech@ptglab.com  
W: ptglab.com

**This product is exclusively available under Proteintech Group brand and is not available to purchase from any other manufacturer.**

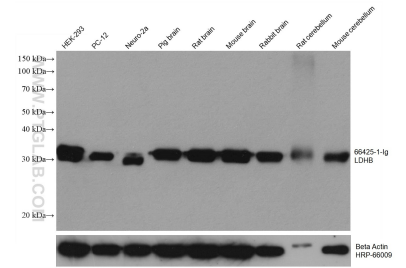
## Selected Validation Data



Immunofluorescent analysis of (-20°C Ethanol) fixed HeLa cells using 66425-1-Ig (LDHB antibody), at dilution of 1:200 and CoraLite®488-Conjugated Goat Anti-Mouse IgG(H+L).



Immunohistochemical analysis of paraffin-embedded mouse heart tissue slide using 66425-1-Ig (LDHB antibody) at dilution of 1:32000 (under 10x lens). Heat mediated antigen retrieval with Tris-EDTA buffer (pH 9.0).



Various lysates were subjected to SDS PAGE followed by western blot with 66425-1-Ig (LDHB antibody) at dilution of 1:50000 incubated at room temperature for 1.5 hours. The membrane was stripped and reblotted with HRP-conjugated Beta Actin Monoclonal antibody (HRP-66009) as loading control.