

For Research Use Only

ERp57/ERp60 Monoclonal antibody, PBS Only

Catalog Number: 66423-1-PBS



Basic Information

Catalog Number: 66423-1-PBS	GenBank Accession Number: BC014433	Purification Method: Protein G purification
Size: 100ug, Concentration: 1mg/ml by Nanodrop;	GeneID (NCBI): 2923	CloneNo.: 3G4G7
Source: Mouse	UNIPROT ID: P30101	
Isotype: IgG1	Full Name: protein disulfide isomerase family A, member 3	
Immunogen Catalog Number: AG8741	Calculated MW: 505 aa, 57 kDa	
	Observed MW: 57 kDa, 60 kDa	

Applications

Tested Applications:
WB, IHC, IF/ICC, Indirect ELISA

Species Specificity:
human, mouse, rat

Background Information

PDIA3, also named as P58, ER60, ERp57, ERp60, ERp61, GRP57, GRP58 and PI-PLC, is a member of the PDI family, participates in the oxidation, reduction, and isomerization of disulfide bonds for correct folding of secretory proteins before modification and transport in the endoplasmic reticulum. It is associated with apoptosis or inhibition of cancer cell growth. PDIA3 was once thought to be a phospholipase; however, it has been demonstrated that this protein actually has protein disulfide isomerase activity. It is thought that complexes of lectins and PDIA3 mediate protein folding by promoting formation of disulfide bonds in their glycoprotein substrates.

Storage

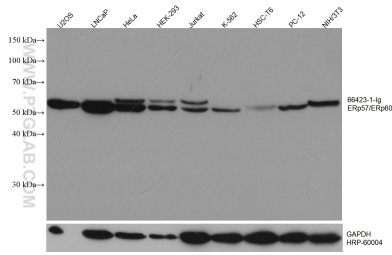
Storage:
Store at -80°C.

Storage Buffer:
PBS Only

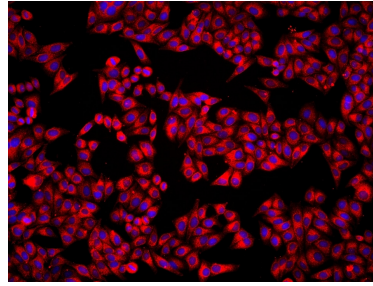
For technical support and original validation data for this product please contact:
T: 1 (888) 4PTGLAB (1-888-478-4522) (toll free in USA), or 1(312) 455-8498 (outside USA)
E: proteintech@ptglab.com
W: ptglab.com

This product is exclusively available under Proteintech Group brand and is not available to purchase from any other manufacturer.

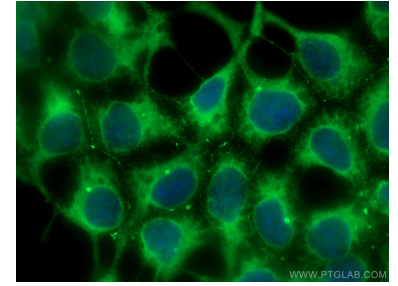
Selected Validation Data



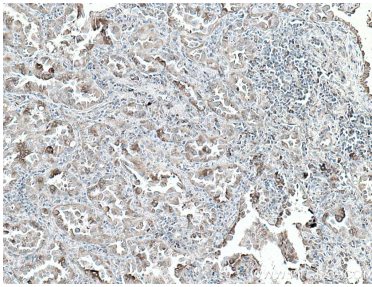
Various lysates were subjected to SDS PAGE followed by western blot with 66423-1-Ig (ERp57/ERp60 antibody) at dilution of 1:9700 incubated at room temperature for 1.5 hours. The membrane was stripped and reblotted with HRP-conjugated GAPDH Monoclonal antibody (HRP-60004) as loading control. This data was developed using the same antibody clone with 66423-1-PBS in a different storage buffer formulation.



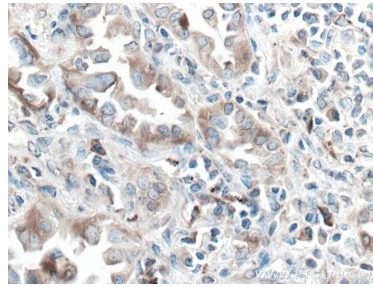
Immunofluorescent analysis of (4% PFA) fixed HepG2 cells using ERp57/ERp60 antibody (66423-1-Ig, Clone: 3G4G7) at dilution of 1:1000 and Multi-rAb CoraLite® Plus 594-Goat Anti-Mouse Recombinant Secondary Antibody (H+L) (Cat.NO. RGAM004). This data was developed using the same antibody clone with 66423-1-PBS in a different storage buffer formulation.



Immunofluorescent analysis of (-20°C Methanol) fixed HEK-293 cells using ERp57/ERp60 antibody (66423-1-Ig, Clone: 3G4G7) at dilution of 1:800 and CoraLite®488-Conjugated Goat Anti-Mouse IgG(H+L). This data was developed using the same antibody clone with 66423-1-PBS in a different storage buffer formulation.



Immunohistochemical analysis of paraffin-embedded human lung cancer tissue slide using 66423-1-Ig (ERp57/ERp60 antibody) at dilution of 1:400 (under 10x lens). Heat mediated antigen retrieval with Tris-EDTA buffer (pH 9.0). This data was developed using the same antibody clone with 66423-1-PBS in a different storage buffer formulation.



Immunohistochemical analysis of paraffin-embedded human lung cancer tissue slide using 66423-1-Ig (ERp57/ERp60 antibody) at dilution of 1:400 (under 40x lens). Heat mediated antigen retrieval with Tris-EDTA buffer (pH 9.0). This data was developed using the same antibody clone with 66423-1-PBS in a different storage buffer formulation.