

For Research Use Only

Calsequestrin 2 Monoclonal antibody, PBS Only



Catalog Number: 66419-1-PBS

Basic Information

Catalog Number: 66419-1-PBS	GenBank Accession Number: BC022288	Purification Method: Protein A purification
Size: 100ug, Concentration: 1 mg/ml by Nanodrop;	GeneID (NCBI): 845	CloneNo.: 1C10A1
Source: Mouse	UNIPROT ID: O14958	
Isotype: IgG2a	Full Name: calsequestrin 2 (cardiac muscle)	
Immunogen Catalog Number: AG13246	Calculated MW: 46 kDa	
	Observed MW: 50 kDa	

Applications

Tested Applications:
WB, IF, IHC, Indirect ELISA

Species Specificity:
human, rat, pig, mouse

Background Information

Calsequestrin (CASQ) is a Ca²⁺-binding protein present primarily in junctional sarcoplasmic reticulum of skeletal and cardiac muscle; the cardiac form (CASQ2) is encoded by a separate gene. The primary role of CASQ2 is buffering of the sarcoplasmic reticulum Ca²⁺ ions, but another role for CASQ2 has emerged recently: CASQ2 regulates the open probability of ryanodine receptor 2 (RyR2). Mutations in CASQ2 cause stress-induced polymorphic ventricular tachycardia, also referred to as catecholaminergic polymorphic ventricular tachycardia 2 (CPVT2), a disease characterized by bidirectional ventricular tachycardia that may lead to cardiac arrest.

Storage

Storage:
Store at -80°C.

Storage Buffer:
PBS Only

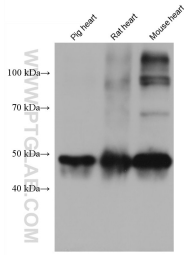
For technical support and original validation data for this product please contact:

T: 1 (888) 4PTGLAB (1-888-478-4522) (toll free in USA), or 1(312) 455-8498 (outside USA)

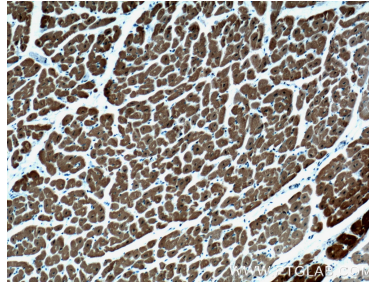
E: proteintech@ptglab.com
W: ptglab.com

This product is exclusively available under Proteintech Group brand and is not available to purchase from any other manufacturer.

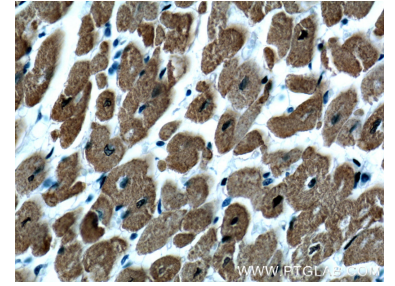
Selected Validation Data



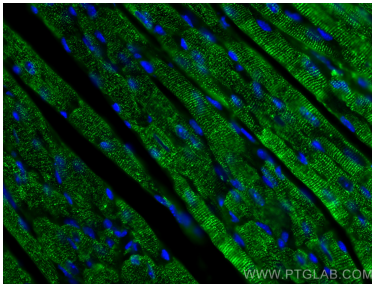
Various lysates were subjected to SDS PAGE followed by western blot with 66419-1-Ig (Calsequestrin 2 antibody) at dilution of 1:30000 incubated at room temperature for 1.5 hours. This data was developed using the same antibody clone with 66419-1-PBS in a different storage buffer formulation.



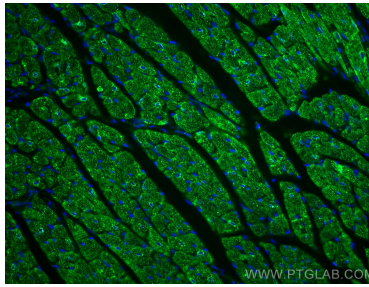
Immunohistochemical analysis of paraffin-embedded human heart tissue slide using 66419-1-Ig (Calsequestrin 2 antibody at dilution of 1:400 (under 10x lens). This data was developed using the same antibody clone with 66419-1-PBS in a different storage buffer formulation.



Immunohistochemical analysis of paraffin-embedded human heart tissue slide using 66419-1-Ig (Calsequestrin 2 antibody at dilution of 1:400 (under 40x lens). This data was developed using the same antibody clone with 66419-1-PBS in a different storage buffer formulation.



Immunofluorescent analysis of (4% PFA) fixed mouse heart tissue using Calsequestrin 2 antibody (66419-1-Ig, Clone: 1C10A1) at dilution of 1:400 and CoraLite®488-Conjugated AffiniPure Goat Anti-Mouse IgG(H+L). This data was developed using the same antibody clone with 66419-1-PBS in a different storage buffer formulation.



Immunofluorescent analysis of (4% PFA) fixed mouse heart tissue using Calsequestrin 2 antibody (66419-1-Ig, Clone: 1C10A1) at dilution of 1:400 and CoraLite®488-Conjugated AffiniPure Goat Anti-Mouse IgG(H+L). This data was developed using the same antibody clone with 66419-1-PBS in a different storage buffer formulation.