

For Research Use Only

# IκB Alpha Monoclonal antibody, PBS Only (Capture)

Catalog Number: 66418-1-PBS

Featured Product



## Basic Information

**Catalog Number:**

66418-1-PBS

**Size:**

100ug, Concentration: 1mg/ml by Nanodrop;

**Source:**

Mouse

**Isotype:**

IgG1

**Immunogen Catalog Number:**

AG22040

**GenBank Accession Number:**

BC004983

**GeneID (NCBI):**

4792

**UNIPROT ID:**

P25963

**Full Name:**

nuclear factor of kappa light polypeptide gene enhancer in B-cells inhibitor, alpha

**Calculated MW:**

36 kDa

**Observed MW:**

36 kDa

**Purification Method:**

Protein G purification

**CloneNo.:**

2G6H7

## Applications

**Tested Applications:**

WB, IHC, Cytometric bead array, Indirect ELISA

**Species Specificity:**

human, mouse, rat

## Product Information

66418-1-PBS targets IκB Alpha as part of a matched antibody pair.

MP51027-2: 66418-1-PBS capture and 60712-1-PBS detection (validated in Cytometric bead array)

Unconjugated mouse monoclonal antibody pair in PBS only (BSA and azide free) storage buffer at a concentration of 1 mg/mL, ready for conjugation.

This conjugation ready format makes antibodies ideal for use in many applications including: ELISAs, multiplex assays requiring matched pairs, mass cytometry, and multiplex imaging applications. Antibody use should be optimized by the end user for each application and assay.

## Background Information

Nuclear factor of kappa light polypeptide gene enhancer in B-cells inhibitor, alpha (NFKBIA, synonyms: IKBA, MAD-3, NFKB1). NFKB1 or NFKB2 is bound to REL, RELA, or RELB to form the NFKB complex. The NFKB complex is inhibited by I-kappa-B proteins (NFKBIA or NFKBIB), which inactivate NF-kappa-B by trapping it in the cytoplasm. Phosphorylation of serine residues on the I-kappa-B proteins by kinases (IKBKA, or IKBKB) marks them for destruction via the ubiquitination pathway, thereby allowing activation of the NF-kappa-B complex. Activated NFKB complex translocates into the nucleus and binds DNA at kappa-B-binding motifs such as 5-prime GGGRNNYYCC 3-prime or 5-prime HGGARNYYCC 3-prime.

## Storage

**Storage:**

Store at -80°C.

**Storage Buffer:**

PBS Only

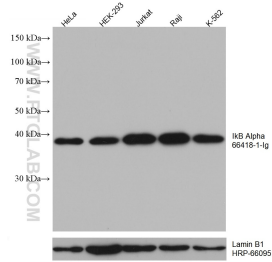
For technical support and original validation data for this product please contact:

T: 1 (888) 4PTGLAB (1-888-478-4522) (toll free in USA), or 1(312) 455-8498 (outside USA)

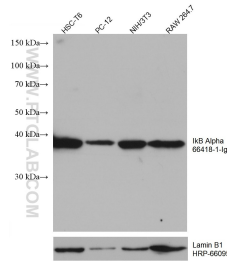
E: [proteintech@ptglab.com](mailto:proteintech@ptglab.com)  
W: [ptglab.com](http://ptglab.com)

**This product is exclusively available under Proteintech Group brand and is not available to purchase from any other manufacturer.**

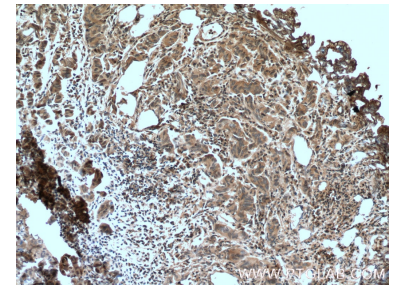
## Selected Validation Data



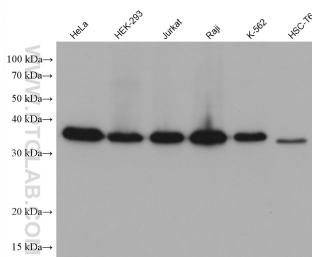
Various lysates were subjected to SDS PAGE followed by western blot with 66418-1-Ig (IκB alpha antibody) at dilution of 1:10000 incubated at room temperature for 1.5 hours. The membrane was stripped and reblotted with HRP-conjugated Lamin B1 Monoclonal antibody (HRP-66095) as loading control. This data was developed using the same antibody clone with 66418-1-PBS in a different storage buffer formulation.



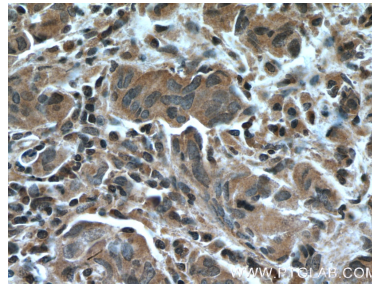
Various lysates were subjected to SDS PAGE followed by western blot with 66418-1-Ig (IκB alpha antibody) at dilution of 1:10000 incubated at room temperature for 1.5 hours. The membrane was stripped and reblotted with HRP-conjugated Lamin B1 Monoclonal antibody (HRP-66095) as loading control. This data was developed using the same antibody clone with 66418-1-PBS in a different storage buffer formulation.



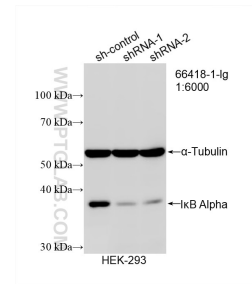
Immunohistochemical analysis of paraffin-embedded human prostate cancer tissue slide using 66418-1-Ig (IκB alpha antibody) at dilution of 1:200 (under 10x lens). Heat mediated antigen retrieval with Tris-EDTA buffer (pH 9.0). This data was developed using the same antibody clone with 66418-1-PBS in a different storage buffer formulation.



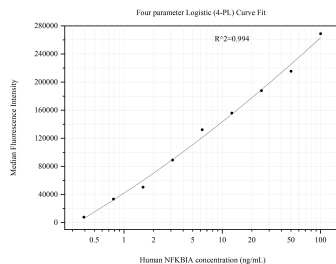
Various lysates were subjected to SDS PAGE followed by western blot with 66418-1-Ig (IκB Alpha antibody) at dilution of 1:10000 incubated at room temperature for 1.5 hours. This data was developed using the same antibody clone with 66418-1-PBS in a different storage buffer formulation.



Immunohistochemical analysis of paraffin-embedded human prostate cancer tissue slide using 66418-1-Ig (IκB alpha antibody) at dilution of 1:200 (under 40x lens). Heat mediated antigen retrieval with Tris-EDTA buffer (pH 9.0). This data was developed using the same antibody clone with 66418-1-PBS in a different storage buffer formulation.



WB result of IκB Alpha antibody (66418-1-Ig; 1:6000; incubated at room temperature for 1.5 hours) with sh-Control and sh-IκB Alpha transfected HEK-293 cells. This data was developed using the same antibody clone with 66418-1-PBS in a different storage buffer formulation.



Cytometric bead array standard curve of MP51027-2, NFKBIA Monoclonal Matched Antibody Pair, PBS Only. Capture antibody: 66418-1-PBS. Detection antibody: 60712-1-PBS. Standard: Ag0345. Range: 0.391-100 ng/mL